

# Trainz Railway Simulator 2006

## Service Pack 1 (build 3099) installation guide

For additional help with installing SP1 in to Trainz Railway Simulator 2006 and to download the update, please visit <http://www.justtrains.net> and click on Support.

**PLEASE NOTE: This service pack is for the Just Trains published version of TRS2006 build 2773 only.**

To identify your build number, double click on your Trainz desktop icon, and from the Launch Menu select Launch Trainz > Start. Once launch is complete, you will find your Trainz version and build number located at the bottom right hand side of the screen. Note down the build number and select the Quit button to return you to the desktop.

Do not apply this service pack to Trainz, UTC or TRS2004. If your TRS2006 Trainz build number is anything other than 2773 this patch will not work for you.

### Key points for the installation of TRS2006 SP1

- Disable your anti-virus/firewall and any cd/dvd copy software.
- If you have custom content (including maps), please follow the instructions for backing up your custom content (at the end of this guide) before proceeding any further.
- Uninstall "Train Driver" if you have this add-on product installed before you uninstall TRS2006, and remember that you will have to re-install Train Driver after the Service Pack has been applied.
- Uninstall TRS2006.
- Re-install TRS2006 – you will need your Serial Number which is printed inside the TRS2006 DVD case.
- Do NOT run TRS2006 – if you do run Trainz it will prevent the service pack from installing correctly and you will need to re-start this process by uninstalling again.
- Run the SP1 patch from the hard drive – if the patch has been supplied on a disc please copy the file to your hard drive and then run the patch. It may not work correctly if run directly from a cd/dvd.
- Expect to wait a long time around the 12-18% mark. The complete installation can take around 45 minutes due to the amount of updated content being installed.
- You must have the TRS2006 disc in your drive to install the service pack.

## Step by step instructions for installing SP1 (build 3099) in to the Just Trains published version of Trainz Railway Simulator 2006 (build 2773)



If you have the “Train Driver” add-on West Somerset Railway route installed in to TRS2006 then you must **uninstall Train Driver before you uninstall Trainz Railway Simulator 2006**. Once it is uninstalled, you can complete the rest of this guide, and when SP1 has been installed in to TRS2006 you will be able to re-install Train Driver.

Not got Train Driver? Find out more about our excellent Train Driver add-on route at <http://www.justtrains.net>

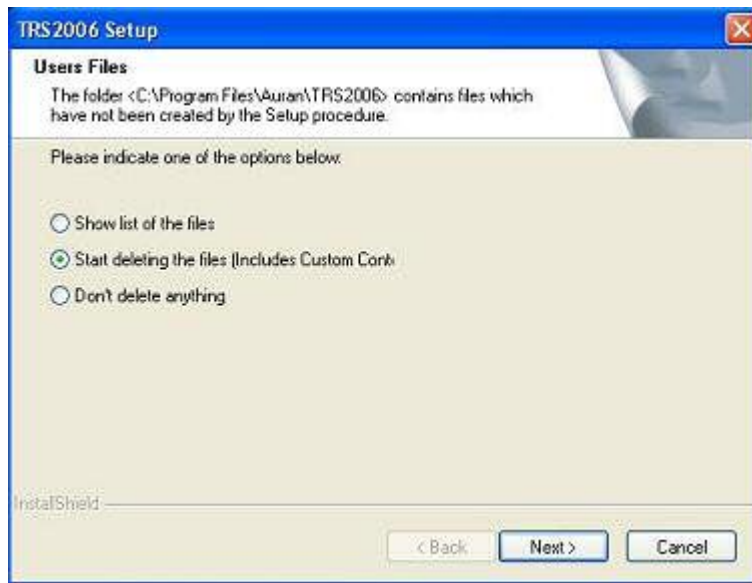
Insert your TRS2006 disc in to your DVD drive, and wait for the launcher menu to appear.

Click the Uninstall option.

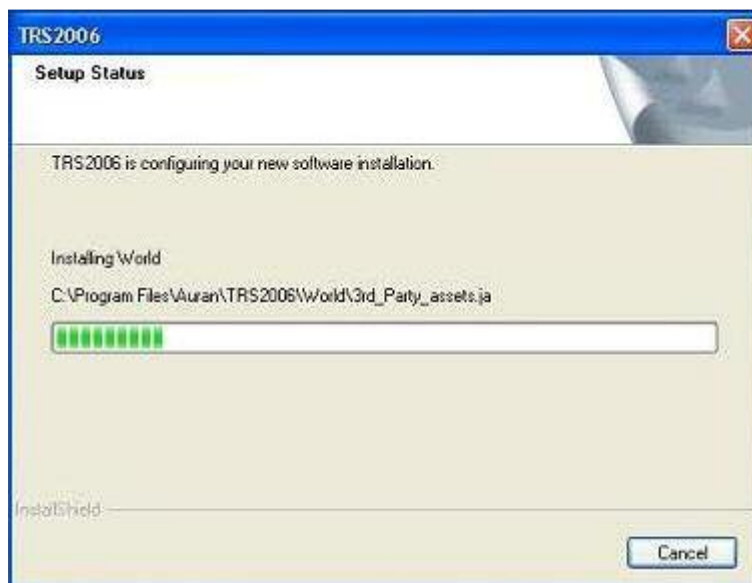
You will be asked if you wish to completely remove the selected application and all of its features. Click “ok”.



You will then be asked if you wish to delete the custom content. Select “Start deleting the files” and click “Next”.



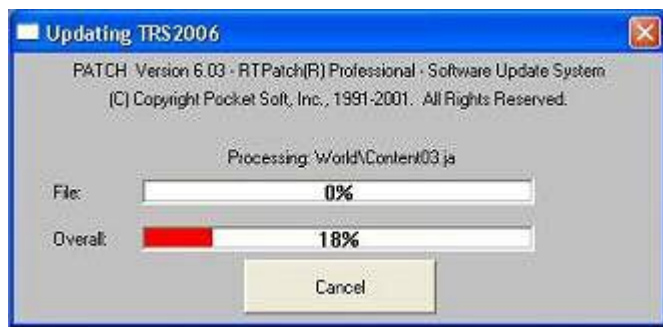
Once you have uninstalled Trainz Railway Simulator 2006, you will need to re-install. Please eject and re-insert the Trainz Railway Simulator 2006 disc, so as the installer appears on your screen.



Once the installation is complete **DO NOT RUN TRAINZ RAILWAY SIMULATOR 2006. It is vital that Trainz is not run at this point, otherwise the Service Pack will not install correctly.**

Please now run the SP1 patch file “**TRS2006\_UK\_2773-3099.exe**”. You will be asked if you want to install the patch and then will get a progress screen showing how far the patch is progressing.

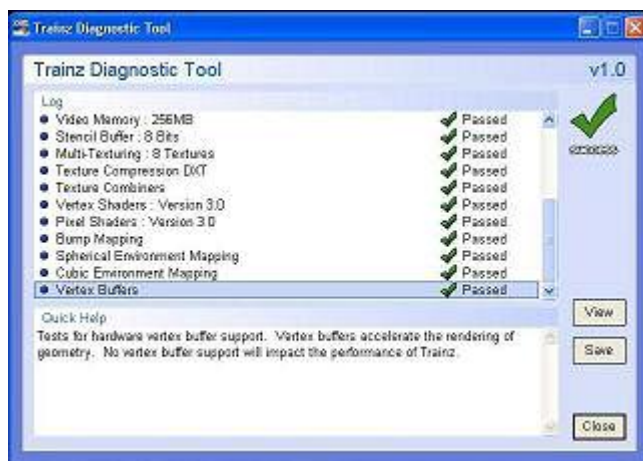
You will have a long wait around the 12 to 18% mark. Please simply allow the installer to continue. It has not frozen and has not stopped responding, it is simply installing a huge amount of updated files and this takes some time to do. To ensure that the updater doesn't crash, please do not do anything else (such as checking your emails or browsing the web) as this may just slow it down and mean the update takes longer as you will be limiting the amount of resources that your computer can dedicate to the updater tool.



Once the SP1 installation is complete you will get a message telling you that the installation has been successful.

You can now run Trainz Railway Simulator 2006 by clicking on the TRS2006 icon on your desktop or launching it via the link in the Start menu, or by the method which you have previously used to launch TRS2006.

This will start up Trainz, and will launch the Trainz Diagnostic Tool which checks that everything is ok on your computer. Once this has completed and given you a “pass” please click on the “close” button.



Remember to adjust your Tuning Settings by clicking on the Options link on the Trainz menu, and ensure that the sliders are set to the levels which you require – they will have been returned to the default levels by this patch, so you may need to set them back to the maximum level.



Once you have done this, and double checked the other configuration settings (including your Planet Auran login details) please click on the “Start” option to fully launch Trainz Railway Simulator 2006. After a short while the main menu with options for Surveyor, Driver, Railyard and Trainz Exchange should appear.

At the bottom right of the screen you will see the build number, which should now say Build 3099. If you see this then you have successfully installed SP1.



**Congratulations! You have now installed Service Pack 1 in to Trainz Railway Simulator 2006.**

## Optional step for users with Custom Content:



If you have the Train Driver add-on West Somerset Railway route installed in to TRS2006 then you must **uninstall Train Driver before you uninstall Trainz Railway Simulator 2006**. Once it is uninstalled, you can complete the rest of this guide, and when SP1 has been installed in to TRS2006 you will be able to re-install Train Driver.

Not got Train Driver? Find out more about our excellent Train Driver add-on route at <http://www.justtrains.net>

## Backing up your Custom Content

You will need to save all your custom content prior to re-installing TRS2006. To do this, Open CMP and select the asset or assets you wish to save.

### **To backup your entire custom content collection by creating an Archive in Content Manager Plus:**(Recommended)

To do this, Open CMP and select the asset or assets you wish to archive. Refer to page 257 in the online manual at <http://www.auran.com/TRS2006/> for more details.

### **To backup your entire custom content collection using Windows Explorer:**

(Recommended for experienced users only)

Launch Windows Explorer, and navigate to the folder containing TRS 2006, usually C:\Program Files\Auran\TRS2006 by default.

Inside the TRS2006 folder, locate the folder named local. This folder contains all of the content that you have downloaded or installed using CMP.

Copy this folder to a safe location in another folder, recordable media or to another drive.

## Reinstalling your Custom Content

### **Re-installing custom content from saving individual items of custom content:**

To Re-install your custom content, simply double click on the previously saved .cdp files.

### **Re-installing custom content from backing up your entire custom content collection using Windows Explorer:**

Launch windows explorer, and navigate to the folder C:\Program Files\Auran\TRS2006

Delete the file assets.tdx

Delete the folder C:\Program Files\Auran\TRS2006\Cache\internet

If there is a file named assets.bku in the C:\Program Files\Auran\TRS2006\Cache folder, delete it as well.

Locate the local folder that you copied to a safe location

Copy the local folder from your safe location back to the C:\Program Files\Auran\TRS2006 folder.

Close the Explorer window and launch TRS2006

Click on the Start button and wait for the main TRS 2006 screen where you select Surveyor / Driver / etc. There will be a short delay as your local folder is used to rebuild the asset database.