



MIDLAND MAIN LINE

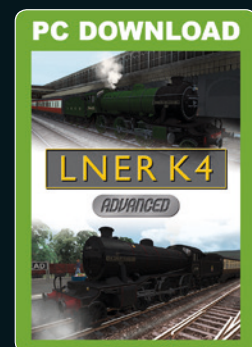
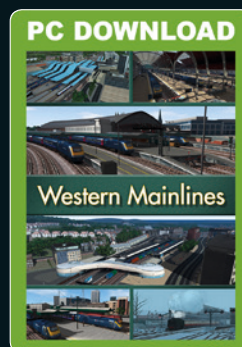
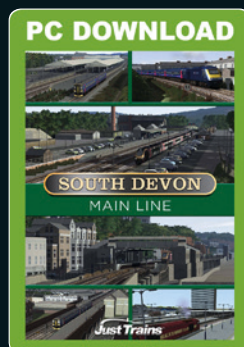
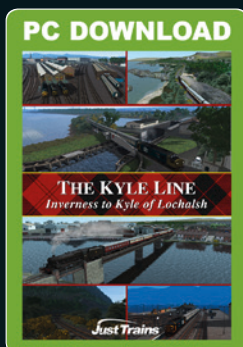
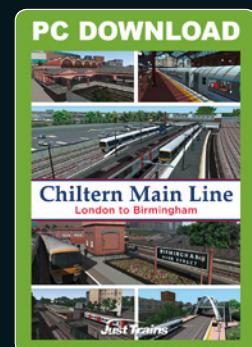
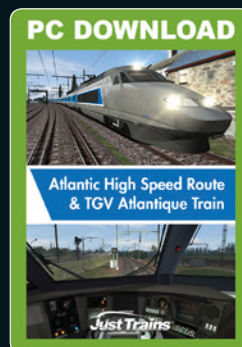
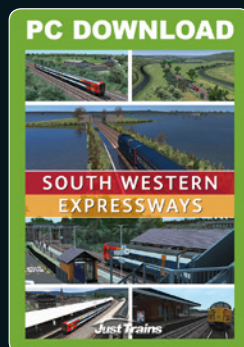
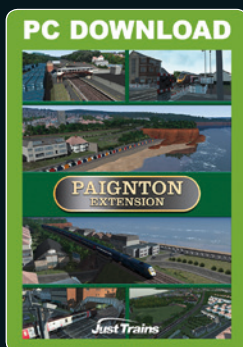
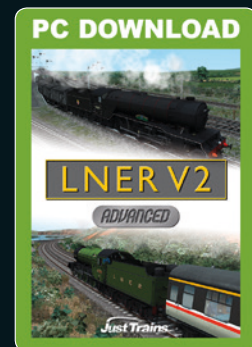
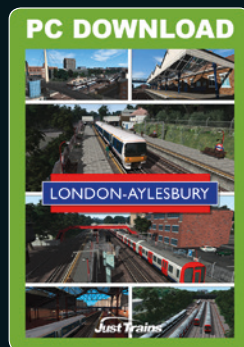
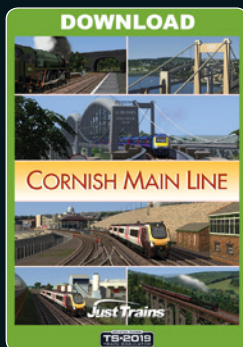
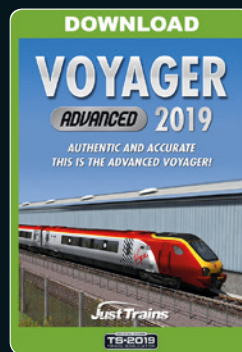
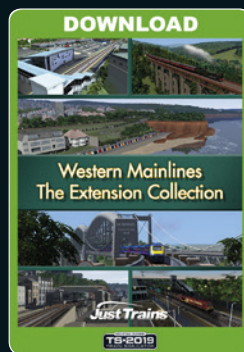
SHEFFIELD – DERBY



ROUTE GUIDE

Just Trains

The Spirit of Train Simulation



Available to buy online at www.justtrains.net

Just Trains™
www.justtrains.net



Route Guide

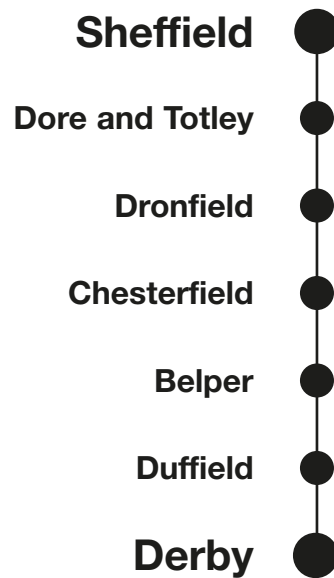
Route expansion for Train Simulator

CONTENTS

INTRODUCTION	4
Train Simulator requirements.....	5
Scenery quality and display settings.....	5
INSTALLATION, UPDATES AND SUPPORT	6
STATIONS.....	7
FEATURES TO LOOK OUT FOR ON THE ROUTE.....	11
SCENARIOS.....	48
Standard scenarios requiring additional payware stock	49
Standard scenarios using default Train Simulator stock.....	55
Free Roam scenarios.....	56
QUICK DRIVE	57
CREDITS	58
COPYRIGHT.....	59

INTRODUCTION

This section of the Midland Main Line runs between Sheffield at the northern end and Derby at the southern end. The route includes seven stations and numerous new custom assets. It is Quick Drive enabled and comes with 15 Standard scenarios.



Train Simulator requirements

If you purchased Train Simulator after 20 September 2012 you will require the European Loco & Asset Pack (available to purchase via [Steam](#)) for this route to display correctly and for some scenarios to work.

Some of the scenarios supplied with this Midland Main Line route require rolling stock that is not supplied with this software. Full details of the rolling stock required for each scenario are provided in the [SCENARIOS](#) section of this manual.

Scenery quality and display settings

Various effects and techniques have been used in the modelling of Midland Main Line: Sheffield-Derby to enhance the realism of the route, including TSX technology for realistic night lighting effects.

Due to the high level of detail provided along the route, it is best to run the route at the highest settings your PC can manage. Settings can all be accessed via the Settings > Graphics menu in Train Simulator. The route will still run at lower settings, of course, but some of the assets may not be displayed as intended.

Run in 64-bit mode!

We strongly advise you to run Train Simulator in 64-bit mode to enhance its stability:

1. Run the Steam client and select 'Games' from the top menu.
2. Select 'Train Simulator' from the left-side menu and press the blue 'PLAY' button in the top centre of the window. The option to 'Play Train Simulator' or 'Play Train Simulator 64-bit Edition' will pop up.
3. Select the 64-bit option and press 'Play'.



INSTALLATION, UPDATES AND SUPPORT

You can install this add-on as often as you like on the same computer system. To re-download the Midland Main Line software:

1. Click on the 'Account' tab on the [Just Trains](#) website.
2. Log in to your account.
3. Click on the 'Your Orders' button.
4. A list of your purchases will appear and you can then re-download the software you require.

Uninstalling

To uninstall this product from your system, select the appropriate option for your version of Windows from the Control Panel:

- 'Add or Remove Programs' (Windows XP)
- 'Programs and Features' (Windows Vista or 7)
- 'Apps & features' (Windows 10 or later)

Select the product you want to uninstall and then select the 'Uninstall' option, following the on-screen instructions to uninstall the product.

Uninstalling or deleting this software in any other way may cause problems when using this product in the future or with your Windows set-up.

Updates and Technical Support

For technical support (in English) please visit the [Support](#) pages on the Just Trains website.

As a Just Trains customer you can obtain free technical support for any Just Trains or Just Flight product.

If an update becomes available for this software, we will post details on the Support page and will also send a notification email about it to all buyers who are currently subscribed to our monthly Newsletter and emails.

Regular News

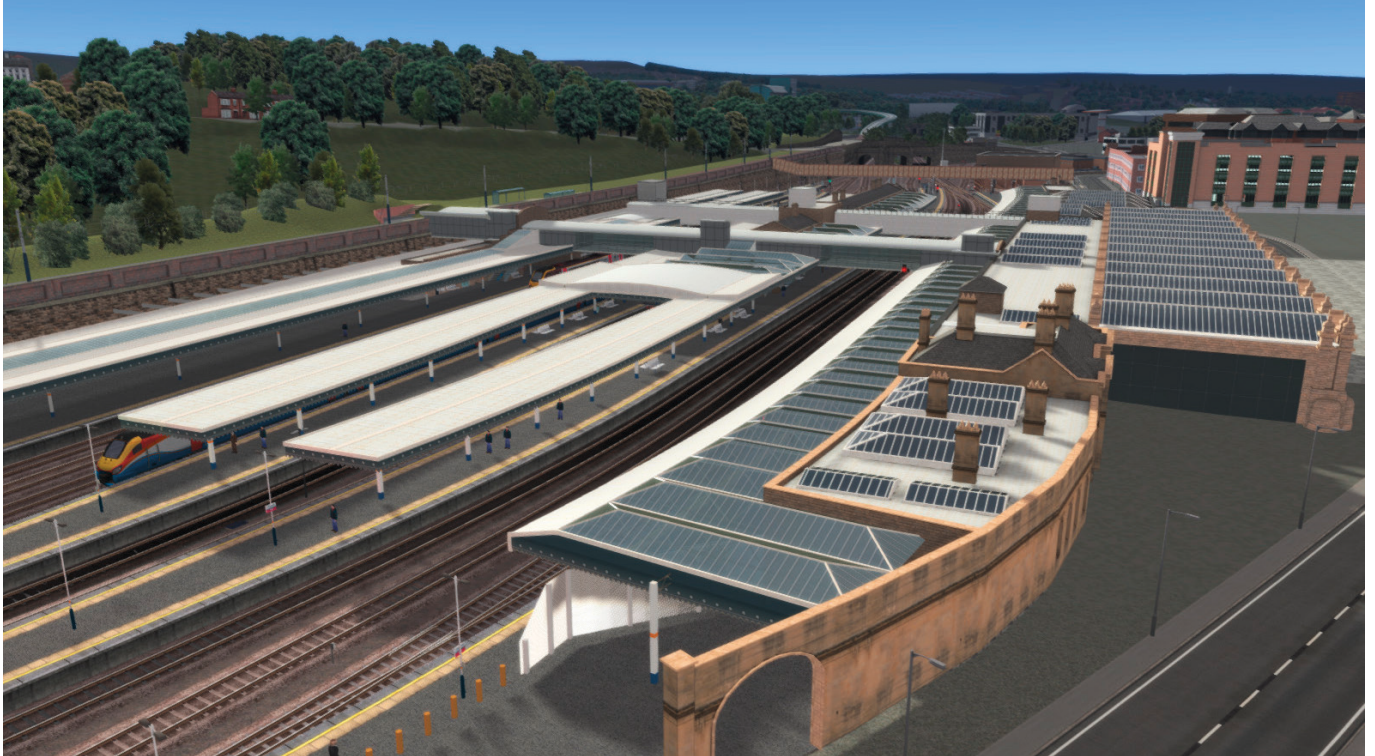
To get all the latest news about Just Trains products, special offers and projects in development, sign up for our [Newsletter](#) and regular emails.

We can assure you that none of your details will ever be sold or passed on to any third party and you can, of course, unsubscribe from this service at any time.

You can also keep up to date with Just Trains via [Facebook](#) and [Twitter](#).

STATIONS

Sheffield



Opened 1870

Passengers 2017-2018: 1.064 million



Dore and Totley



Opened 1872

Passengers 2017-2018: 0.179 million

This station is located around five miles south of Sheffield and to the west of the up/down main lines of the route. It is therefore normally only used by services running south from Sheffield towards Manchester or those heading north from Manchester. This is the junction where the trans-Pennine Hope Valley Line meets the Midland Main Line.

Dronfield



Opened in 1870, closed in 1967 and re-opened in 1981

Passengers 2017-2018: 0.203 million

Chesterfield



Opened 1840

Passengers 2017-2018: 1.859 million

Belper



Opened 1840

Passengers 2017-2018: 2.259 million

Duffield



Opened 1841

Passengers 2017-2018: 74,300

Duffield station is the final stop between Sheffield and Derby. Its island platform is served by trains from Matlock and the third platform, which is not connected to the main line, is part of the Ecclesbourne Valley Railway.

Derby



Opened 1839

Passengers 2017-2018: 4.089 million

FEATURES TO LOOK OUT FOR ON THE ROUTE

Numerous landmark buildings and other features of interest have been modelled along the length of the route – these are some of them, listed in the order you'd see them when driving south from Sheffield:

Park Hill housing estate



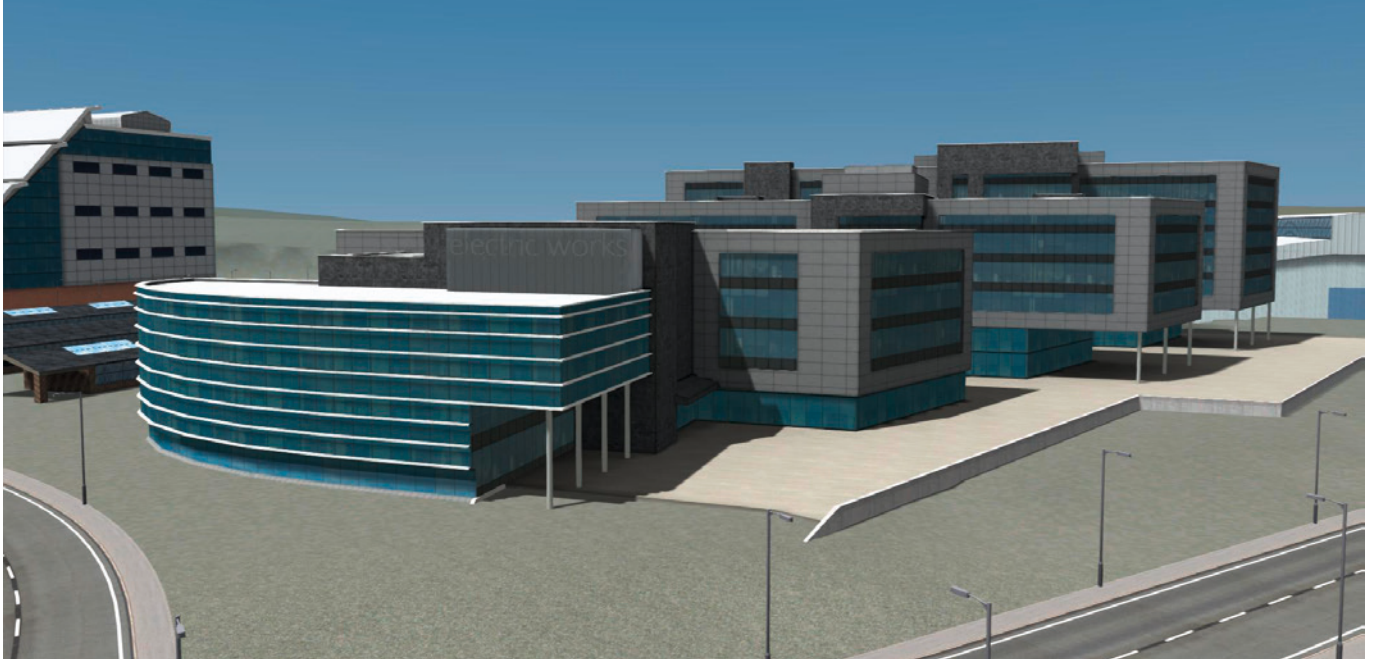
These distinctive council housing flats can be clearly seen from Sheffield station.

Sheffield Station Supertram stop



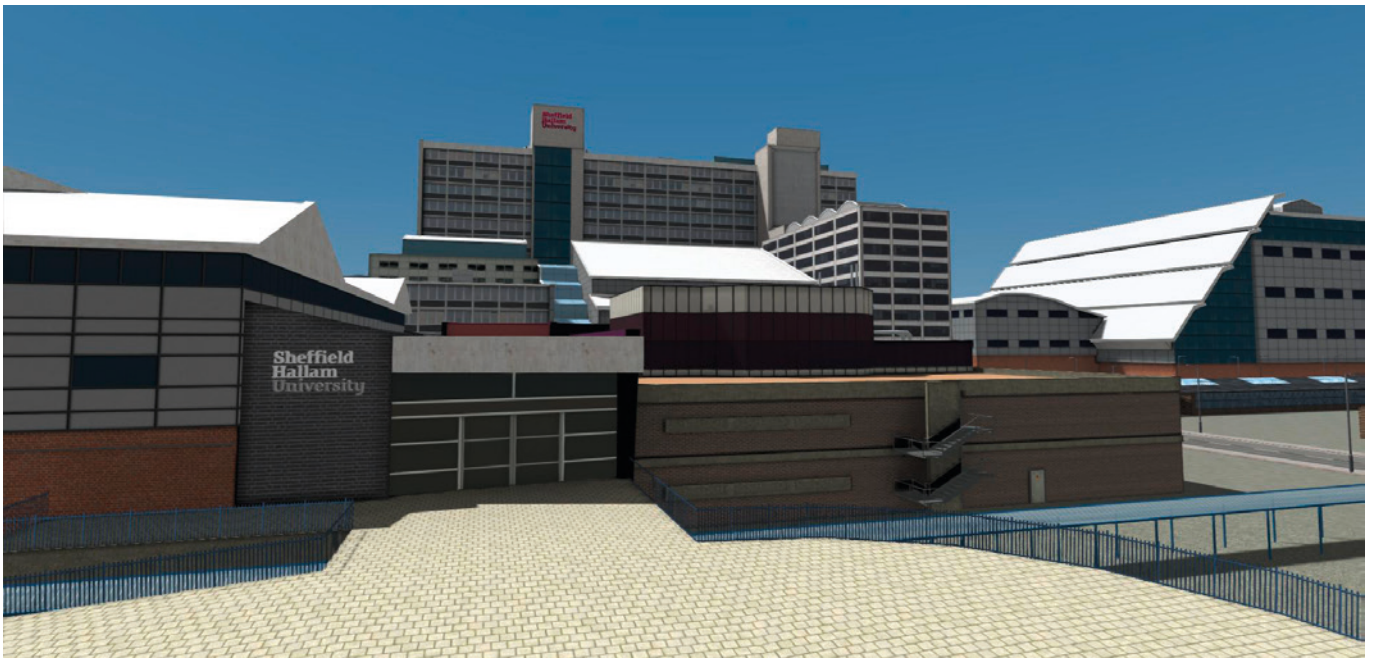
Situated on the hillside above the railway station and below the Park Hill housing estate, this tram station serves both locations.

Electric Works building



Situated in the heart of Sheffield, Electric Works is a state-of-the-art office space for a vibrant community of creative, digital and media businesses.

Sheffield Hallam University

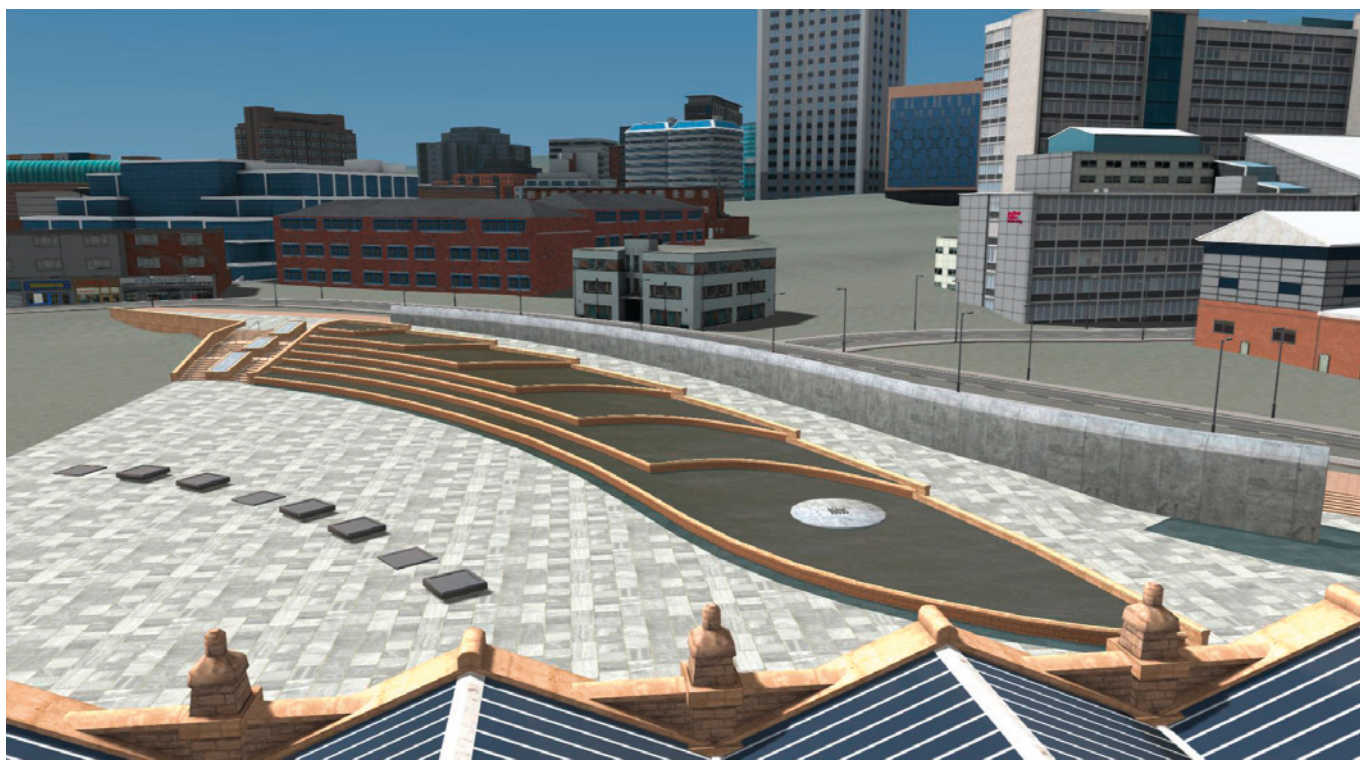


One of the UK's largest universities, Sheffield Hallam University is based on two sites: the City Campus near Sheffield railway station in the city centre and the Collegiate Crescent Campus about two miles away in south-west Sheffield.

Sheffield station architecture



Several attractive and distinctive architectural features are visible outside the entrance to Sheffield station.



Sheffield station multi-storey car park



This car park provides almost 700 parking spaces and serves the railway station and nearby locations.

Sheffield Power Signal Box



This signal box is located just outside Sheffield station.

Sheffield station footbridge



Although this footbridge does not actually serve the station, it crosses all the lines and its distinctive design makes it something of a landmark.

Sheffield Depot



This depot is just outside Sheffield station and is used to stable various DMUs.

Sheffield Funeral Care building



This building is just to the south of Sheffield station.

Shrewsbury Road tunnels



These two tunnels beneath Shrewsbury Road serve the southern entrance to Sheffield station.

Granville Road bridge



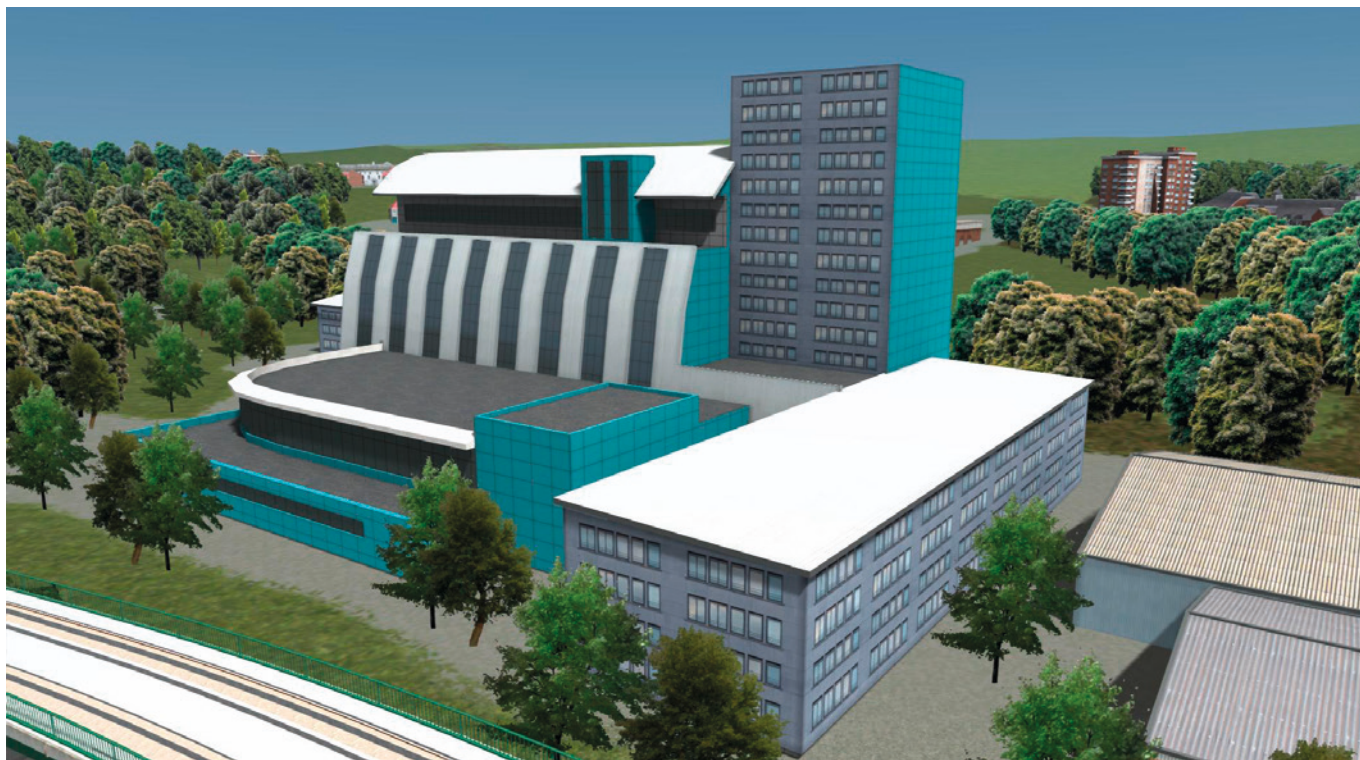
This brick bridge south of Sheffield station carries the Granville Road over the railway lines.

Sheffield Supertram bridge



This bridge carrying Stagecoach Supertram vehicles can be seen running beside the railway line.

The Sheffield College



The Sheffield College is a general further education college. The City campus is housed in this distinctive building.

Casino



This is located to the south of the city.

East Bank Tunnel



This 80-yard tunnel has two bores, one carrying two tracks and the other a single track.

Home improvement warehouse



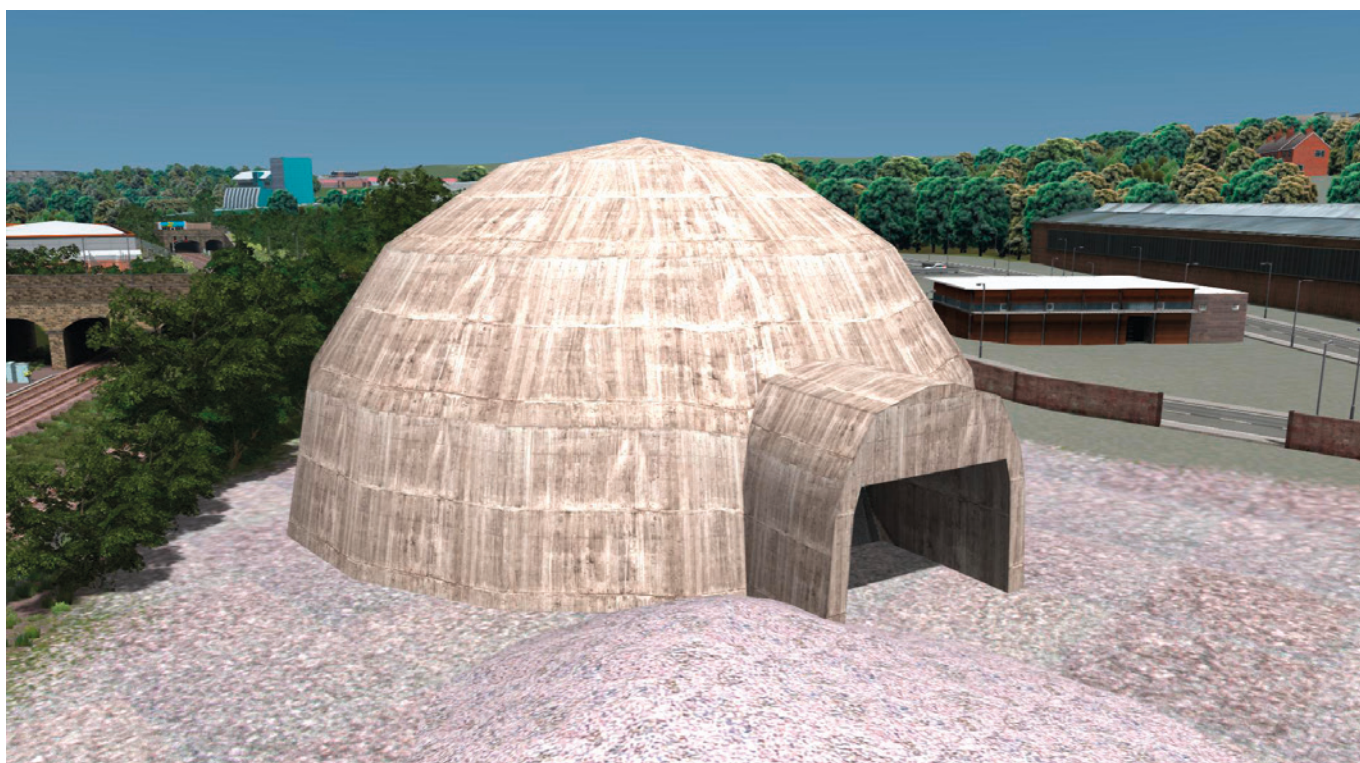
This can be seen on the west side of the tracks as you exit the East Bank Tunnel.

Charlotte Road bridge



This four-arch brick bridge carries Charlotte Road over the railway lines.

Sheffield salt dome



This igloo-shaped building houses the stock of salt which is used to treat roads in snowy and icy weather conditions.

Bramall Lane football stadium



Bramall Lane has been Sheffield United's home since the club was established in 1889 and is the oldest major stadium in the world still to be hosting professional association football matches.

Health club



This is located just besides the tracks.

Woodseats Road bridge



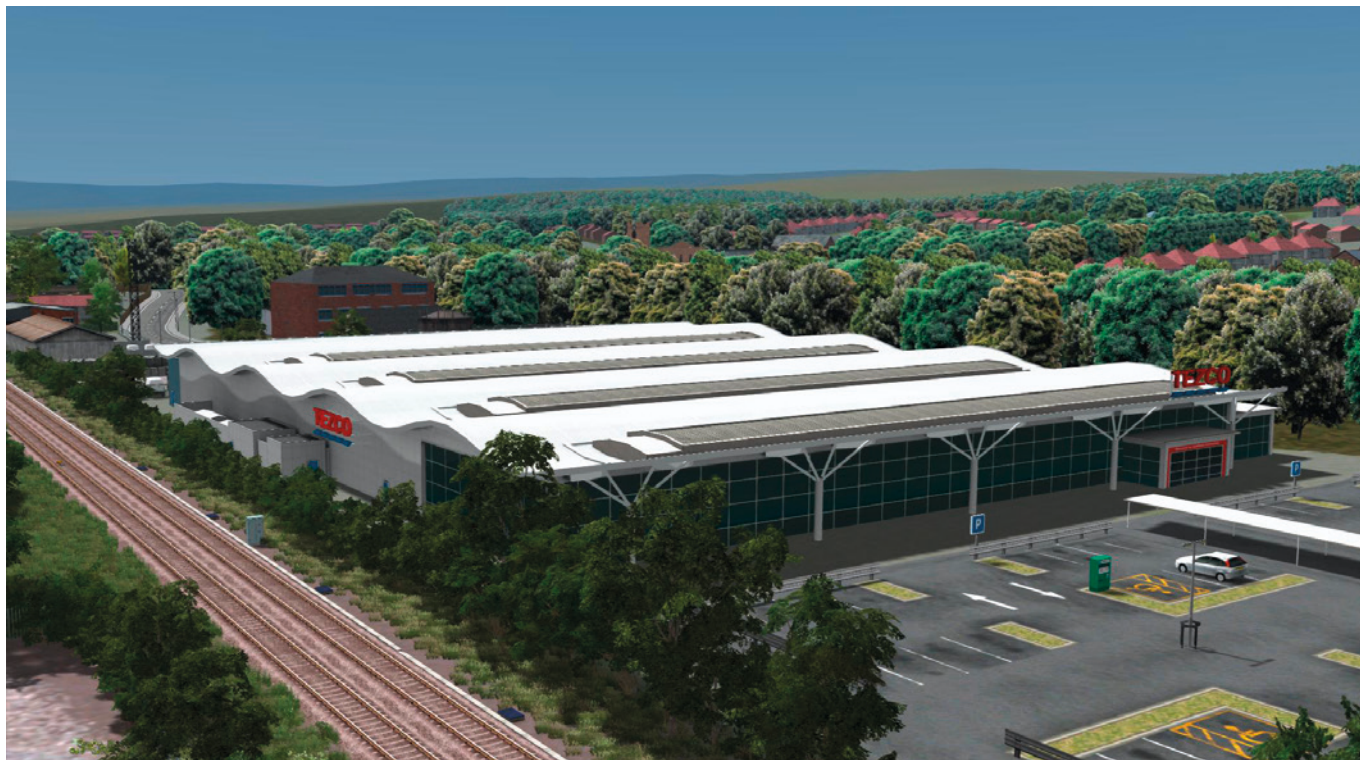
Approximately two miles south of Sheffield station, this bridge carries Woodseats Road over the railway lines.

Archer Road bridge



This bridge under Archer Road is of steel girder and brick construction.

Superstores



These two superstores are located opposite each other on either side of the railway tracks.



Site of Heeley station



Heeley station, near London Road on Heeley Bridge, was opened in 1870 and served the communities of Heeley, Meersbrook and Lowfield. It closed in 1968 at the same time as Millhouses railway station and all the station buildings were demolished.

Site of Millhouses and Ecclesall station



Millhouses and Ecclesall station (originally called just Ecclesall) was opened in 1870 and was located between Heeley and Beauchief stations.

After it was closed in 1968 it remained derelict until the station buildings and platforms were finally removed in the 1980s. The stationmaster's house survives as a private residence.

Site of Beauchief station



Beauchief station was built by the Midland Railway in 1870, It was closed in 1961 for passenger travel and in 1964 for freight operations.

Dore South Junction



Trains heading north up the Midland Main Line bear left at this junction to join the Hope Valley Line heading towards Manchester.

Bradway Tunnel



Bradway Tunnel (one mile and 266 yards long) is located at the summit of the Midland Main Line, between Chesterfield and Sheffield.

Sheffield Football Club stadium



This is the home of the world's first ever football club. Founded in 1857, Sheffield Football Club is officially recognised as the oldest existing club now playing football in the world. The club is currently based at the Coach and Horses Ground in Dronfield, Derbyshire.

Dronfield retail park



This is situated right next to the railway line and houses several retail units.

Whittington bridges



This complex set of bridges handles the railway, a road and a river.

Whittington play area



This children's play area features a wooden locomotive to reflect its location near the main railway line.

Chesterfield FC Proact Stadium



This is the home of Chesterfield Football Club. Chesterfield moved here from their historic home of Saltergate in 2010.

Tapton Junction



This junction is where the direct route towards Rotherham diverges from the line to Sheffield. This route, commonly called 'The Old Road', allows trains to bypass Sheffield and is mainly used by freight trains.

Tapton footbridge



This steel and brick footbridge allows pedestrians to cross the railway lines.

Crooked spire – Chesterfield



The twisted and leaning spire on the Parish Church of St Mary and All Saints is Chesterfield's most celebrated landmark. There are many fascinating legends which claim to explain why the spire is twisted, but the truth is probably that it is due to the lead covering the spire twisting unevenly when the sun warms it during the day, compounded by the use of unseasoned timber in the spire's construction.

Clay Cross



Clay Cross is the real-world location where the Erewash Valley Line diverges from the Midland Main Line, giving trains direct access to Nottingham. The Erewash Valley Line can also be used to access the Midland Main Line towards Leicester without passing through Derby.

Clay Cross Tunnel



The tunnel is 1,784 yards long and took almost three years to complete. Each end of the tunnel uses a different design, with the castellated design of the northern end the most distinctive.



Higham footbridge



This steel footbridge rests on brick supports.

Toadmoor Tunnel



This tunnel at Ambergate is 128 yard in length and was previously called the Hag Wood Tunnel.

Ambergate bridges



These two bridges are built next to each other and both carry track over two roads and a river.

Ambergate Junction



This is where the branch line to Matlock diverges from the main line.

River Derwent bridge



This bridge allows the railway to span the Derwent, a 66-mile tributary of the River Trent which mostly flows through the Peak District and its foothills.

Broadholme loops



These passing loops allow faster trains to overtake slower ones.

Belper cutting North



This is a deep cutting on the approach to Belper.

Belper cutting South



This cutting is in the heart of Belper, with shops on one side and a road running over it.

Milford Tunnel



This twin-track tunnel on the Midland Main Line runs under a hill called the Chevin between Duffield and Belper. It was built in 1840 and is 855 yards long.

Ecclesbourne Valley Railway



This 9-mile (14.5 km) heritage railway operates services in both directions between Wirksworth and Duffield and from Wirksworth to Ravensthorpe. The Railway is not connected to the main line but you can see one end of the line beside Duffield station.

Duffield 'Poetry bridge'



This bridge gets its unofficial name from the graffiti on it which proclaims it to be the 'Poetry bridge'.

Breadsall Junction



This is on the approach to Derby where the Up Slow line diverges and Breadsall Loop rejoins the Midland Main Line.

Breadsall bridge



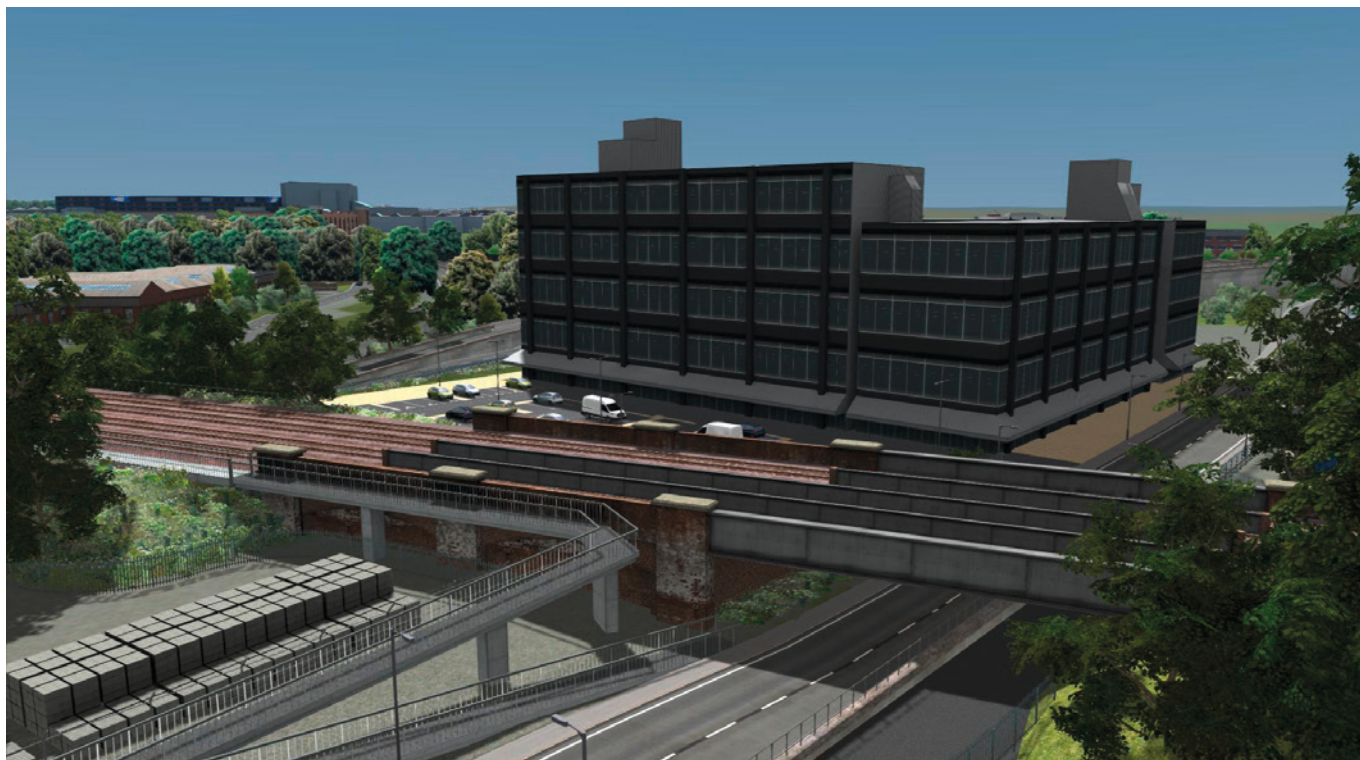
This is a modern road bridge of concrete and brick design.

St. Mary's bridge



This road bridge has three arches, under each of which a railway line passes. A modern arched footbridge is located to one side of the approach to the bridge.

Underpass and Derby NHS offices



The A52 underpass goes under the railway at this point, just opposite some NHS offices.

Derby bus depot



Derby's bus depot can be seen beside the railway track.

Pride Parkway bridge



At this point the railway goes under the Pride Parkway road bridge.

John Ellis House



These Network Rail offices are just outside Derby station.

Offices – Derby



These offices can be seen near Derby station.



Hotel – Derby



This hotel lies just a brief walk from Derby station.

Derby College

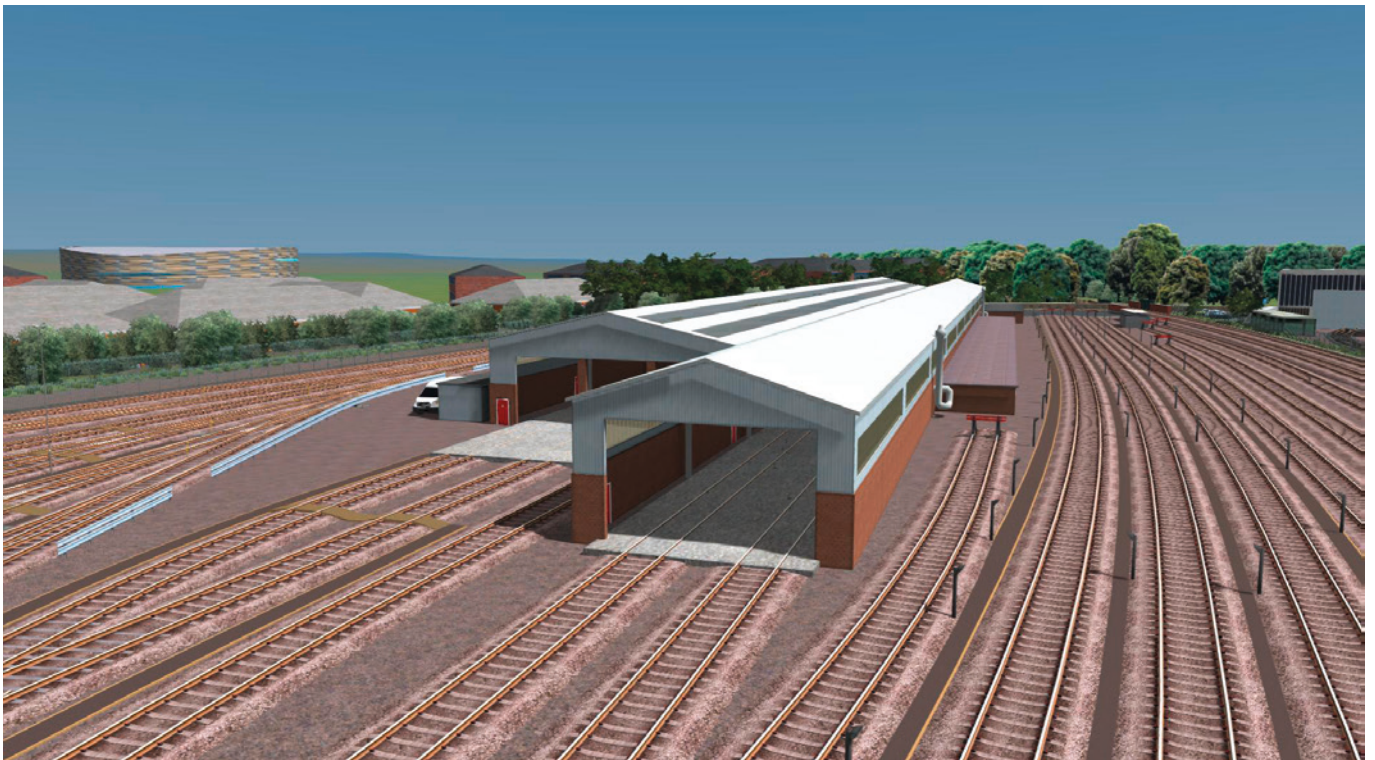


The flagship Roundhouse site of this further education centre is situated next to the tracks opposite Derby station.

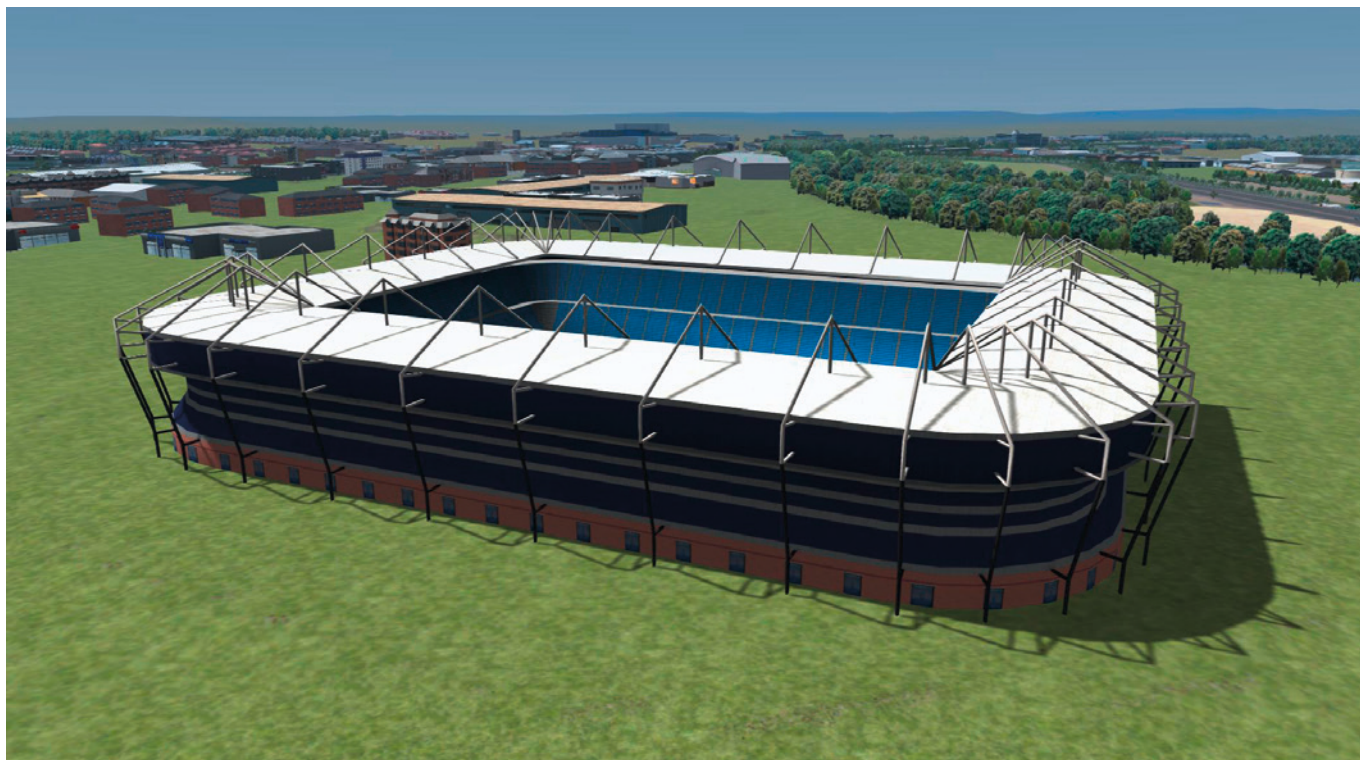
Etches Park



This Traction & Rolling Stock Maintenance Depot is used by East Midlands Railway and is where their fleet of Class 222 units is stabled when not in service. The facility includes two large sheds and a number of running lines as well as fuel and washing facilities.

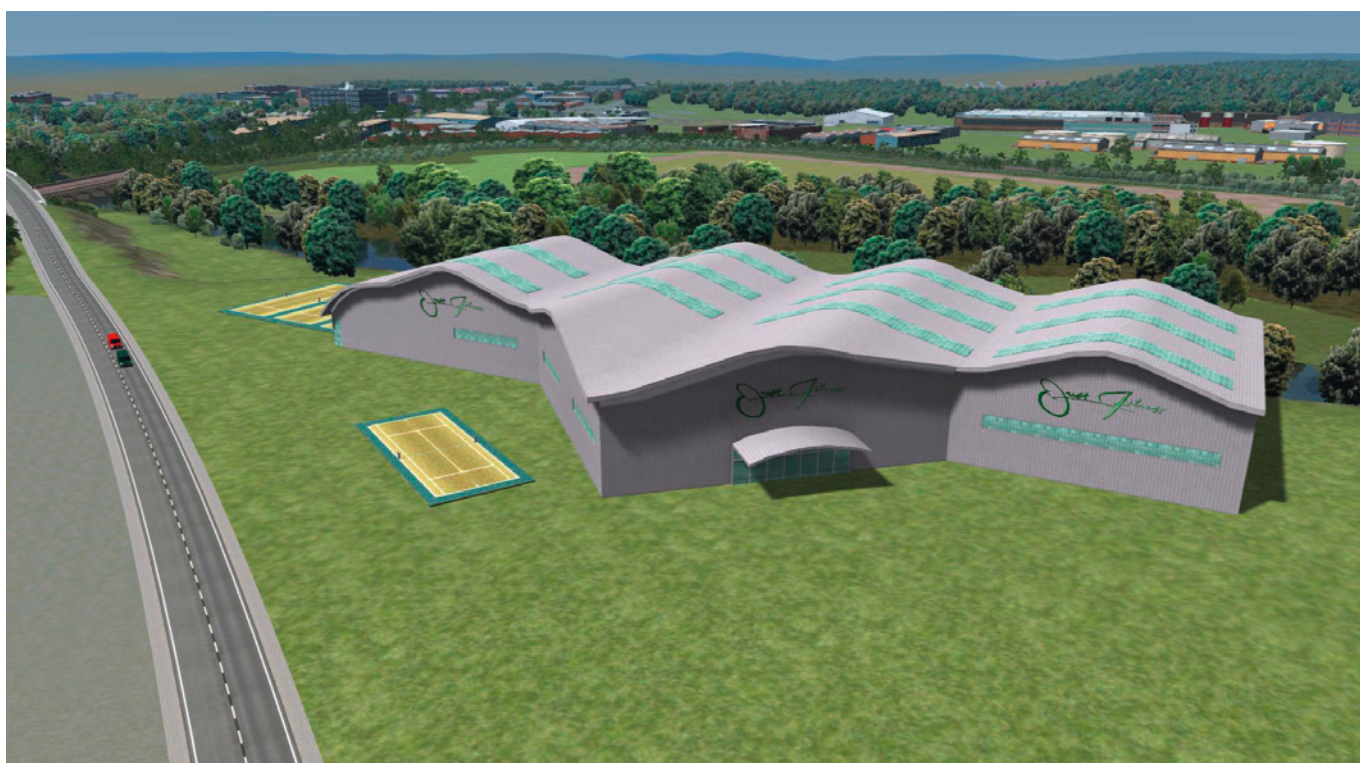


Pride Park stadium



Derby County FC moved here in 1997 from its former home, The Baseball Ground.

Health club – Derby



This distinctive building is visible from the railway and is just a short distance from Derby station.

Derby Rail Technical Centre (RTC)



Derby RTC was built in the 1960s by British Rail and is currently home to Network Rail's fleet of test trains. A workshop here allows the overhaul of locomotives for various operators.

Litchurch Lane Works



This works has a long history of building rolling stock, dating right back to the Midland Railway in 1876. In recent times a number of Multiple Unit builds have been completed here, including London Underground S8 Stock.



London Road bridge



This bridge carries London Road over the railway just south of Derby station.

Derby Power Signal Box



This distinctive building housed the Derby Power Signal Box.

Chaddesden Yard



This yard to the north of Derby station is on the former avoiding line which bypassed Derby until its closure. Nowadays the yard is used for freight workings and wagon storage.

SCENARIOS

Choosing a scenario

When you first start Train Simulator, select the 'Drive' option in the Main Menu, then choose either the 'Standard' or the 'Free Roam' scenarios.

Use the scroll bar on the right side to scroll down to 'Just Trains – Midland Main Line'.

You can now choose your scenario and click on the 'Go' button.

15 scenarios for Midland Main Line are provided and 12 of these are available in two versions: one version which requires additional payware stock and one which uses default Train Simulator stock (these scenarios are prefixed with [Default]). The other three scenarios are only operable using additional payware stock.

If you purchased Train Simulator after 20 September 2012, you will require the European Loco & Asset Pack (available to purchase via [Steam](#)) for all the scenarios to operate correctly.

The add-on requirements for each scenario are listed in the descriptions, but here is a complete list of all the payware add-ons required to operate all the scenarios which require additional payware stock:

Just Trains

- [Class 20 Advanced Collection](#)
- [Class 153 DMU Advanced](#)
- [Class 222 Advanced 2019](#)
- [Class 60 Advanced & Freight Wagons](#)
- [Cargowaggon Flat IGA PlusPak](#)
- [Cargowaggon IWB PlusPak](#)
- [VGA/VKA Wagon PlusPak](#)
- [Voyager Advanced 2019](#)

Steam

- [Freightliner Class 66 v2.0 Loco Add-On](#)
- [Network SouthEast Class 159 DMU Add-On](#)
- [Settle to Carlisle Route Add-On](#) (for the PCA wagons)
- [BR Class 170 'Turbostar' DMU Add-On](#)
- [BR Sectors Class 56 Loco Add-On](#)
- [BDA 80t Bogie Bolster Wagon Pack](#)
- [BR Class 31 Loco Add-On](#)
- [Chatham Main & Medway Valley Lines Route Add-On](#)

Armstrong Powerhouse

- [Class 142 Diesel Multiple Unit Pack](#)
- [Class 150/2 Diesel Multiple Unit Pack](#)
- [Class 158 \(Perkins\) Enhancement Pack](#)
- [Class 158/159 \(Cummins\) Enhancement Pack](#)
- [Class 43 \(Valenta\)/Mk3 Enhancement Pack](#)
- [Class 43 \(VP185\)/Mk3 Enhancement Pack](#)
- [Class 43 \(MTU\)/Mk3 Enhancement Pack](#)
- [Class 66 Enhancement Pack](#)
- [Class 156 Diesel Multiple Unit Pack](#)
- [Class 56 Enhancement Pack](#)
- [JNA-C Wagon Pack](#)
- [BAA/BZA Wagon Pack](#)

Standard scenarios requiring additional payware stock

1F01 0717 Derby – Sheffield

Good morning, driver. Release the doors and set up the cab ready for your 0717 departure. You'll call at Belper, Chesterfield, Dronfield and Sheffield. Please note that there is a lot of extra padding added to the timetable so you'll probably arrive a few minutes early. Have a safe trip!

Required stock:

Just Trains

- *Class 153 DMU Advanced*
- *Voyager Advanced 2019*
- *Class 222 Advanced 2019*

Steam

- *Freightliner Class 66 v2.0 Loco Add-On*
- *Network SouthEast Class 159 DMU Add-On*

Armstrong Powerhouse

- *Class 142 Diesel Multiple Unit Pack*
- *Class 150/2 Diesel Multiple Unit Pack*
- *Class 158/159 (Cummins) Enhancement Pack*
- *Class 43 (MTU)/Mk3 Enhancement Pack*
- *Class 43 (VP185)/Mk3 Enhancement Pack*
- *Class 66 Enhancement Pack*

1C13 06:00 Sheffield – St Pancras International

You are rostered to drive 1C13 as far as Derby. Having driven your loco in as an ECS from Neville Hill, your driving hours permit you to drive only so far south before heading back north later on in the day. Please allow your waiting passengers to board and depart at 06:00. You will call at Chesterfield on the way.

Required stock:

Just Trains

- *Class 222 Advanced 2019*
- *Class 153 DMU Advanced*
- *Voyager Advanced 2019*

Steam

- *Network SouthEast Class 159 DMU Add-On*
- *PCA wagons from the Settle to Carlisle Route Add-On*
- *Freightliner Class 66 v2.0 Loco Add-On*
- *BR Class 170 'Turbostar' DMU Add-On*

Armstrong Powerhouse

- *Class 43 (VP185)/Mk3 Enhancement Pack*
- *Class 158/159 (Cummins) Enhancement Pack*
- *Class 142 Diesel Multiple Unit Pack*

1C35 10:29 Sheffield – St Pancras International

Good morning, driver. Today is a simple run down as far as Derby. You will call at Chesterfield en route before arriving at Derby for a crew change.

Required stock:

Just Trains

- *Class 222 Advanced 2019*
- *Voyager Advanced 2019*
- *Class 153 DMU Advanced*

Steam

- *Network SouthEast Class 159 DMU Add-On*

Armstrong Powerhouse

- *Class 158/159 (Cummins) Enhancement Pack*

1Y26 17:17 Nottingham – Leeds

Good evening, driver. You are in charge of this Nottingham to Leeds service as far as Sheffield. You join the service at Clay Cross North Junction.

Required stock:

Just Trains

- *Voyager Advanced 2019*
- *Class 222 Advanced 2019*

Steam

- *Network SouthEast Class 159 DMU Add-On*

Armstrong Powerhouse

- *Class 158/159 (Cummins) Enhancement Pack*
- *Class 150/2 Diesel Multiple Unit Pack*

4E26 Dollands Moor Sidings – Scunthorpe Redbourne Sidings

Good afternoon, driver. You join 4E26 just alongside Etches Park. You will be required to call into Derby station before travelling north to Sheffield. A driver change will take place when you arrive at Sheffield. Please note that you are currently running approximately 20 minutes late. Your maximum permitted speed for this run is 75 MPH. Try your best to claw back some lost time.

Required stock:

Just Trains

- *Cargowaggon Flat IGA PlusPak*
- *Class 222 Advanced 2019*
- *Class 153 DMU Advanced*
- *Voyager Advanced 2019*

Steam

- *Freightliner Class 66 v2.0 Loco Add-On*

6M83 Doncaster Belmont – Bescot Yard

Drive an empty rake of wagons bound for Bardon Hill. You join the working just outside Sheffield station. You will run as far as Derby, where a crew change is scheduled.

Required stock:

Just Trains

- *Class 60 Advanced & Freight Wagons*
- *Cargowaggon Flat IGA PlusPak*
- *Cargowaggon IWB PlusPak*
- *VGA/VKA Wagon PlusPak*

Armstrong Powerhouse

- *Class 43 (Valenta)/Mk3 Enhancement Pack*
- *Class 156 Diesel Multiple Unit Pack*

1997: 1F38 10:00 St Pancras – Sheffield

Drive a Midland Main Line HST from Derby to Sheffield in the summer of 1997.

Required stock:

Just Trains

- *Class 60 Advanced & Freight Wagons*

Steam

- *BR Sectors Class 56 Loco Add-On*

Armstrong Powerhouse

- *Class 43 (Valenta)/Mk3 Enhancement Pack*
- *Class 56 Enhancement Pack*

1R86 11:57 Norwich – Liverpool Lime Street

Drive 156 408 on 1R86 from Clay Cross to Dore and Totley via Sheffield in September 2019.

Required stock:

Just Trains

- *Voyager Advanced 2019*
- *Class 222 Advanced 2019*

Armstrong Powerhouse

- *Class 158 (Perkins) Enhancement Pack*
- *Class 158/159 (Cummins) Enhancement Pack*
- *Class 156 Diesel Multiple Unit Pack*

6M83 Tinsley Yard GBRF – Bardon Hill GBRF

Drive an empty rake of wagons bound for Bardon Hill. You join the working just outside Sheffield station. You will run as far as Derby, where a crew change is scheduled.

Required stock:

Just Trains

- *Voyager Advanced 2019*
- *Class 222 Advanced 2019*
- *Class 60 Advanced & Freight Wagons*
- *Class 153 DMU Advanced*

Steam

- *Network SouthEast Class 159 DMU Add-On*
- *Chatham Main & Medway Valley Lines Route Add-On*
- *Freightliner Class 66 v2.0 Loco Add-On*
- *BDA 80t Bogie Bolster Wagon Pack*

Armstrong Powerhouse

- *Class 158 (Perkins) Enhancement Pack*
- *Class 156 Diesel Multiple Unit Pack*
- *Class 158/159 (Cummins) Enhancement Pack*
- *Class 142 Diesel Multiple Unit Pack*
- *Class 66 Enhancement Pack*

1Y99 2003 Leeds – Nottingham

Good evening, driver. Today you'll be taking one of two Leeds – Nottingham services which go via Derby instead of via the Erewash Valley Line. You'll call at Dronfield, Chesterfield and Derby before handing over to another driver. Have a safe trip!

Required stock:**Just Trains**

- *Voyager Advanced 2019*
- *Class 222 Advanced 2019*
- *Class 60 Advanced & Freight Wagons*

Steam

- *Network SouthEast Class 159 DMU Add-On*

Armstrong Powerhouse

- *Class 150/2 Diesel Multiple Unit Pack*
- *Class 158/159 (Cummins) Enhancement Pack*
- *Class 43 (MTU)/Mk3 Enhancement Pack*
- *Class 43 (VP185)/Mk3 Enhancement Pack*

1C00 07:25 Sheffield – St Pancras

Drive a Class 222 Advanced on the 07:25 from Sheffield as far as Derby in the Summer of 2019.

Required stock:**Just Trains**

- *Class 222 Advanced 2019*
- *Voyager Advanced 2019*
- *Class 153 DMU Advanced*

Steam

- *Freightliner Class 66 v2.0 Loco Add-On*
- *Network SouthEast Class 159 DMU Add-On*

Armstrong Powerhouse

- *Class 43 (VP185)/Mk3 Enhancement Pack*
- *Class 158/159 (Cummins) Enhancement Pack*
- *Class 158 (Perkins) Enhancement Pack*

1E67 16:40 Paignton – Leeds

Drive a CrossCountry HST on 1E67 16:40 Paignton to Leeds from Derby to Sheffield in June 2019.

Required stock:**Just Trains**

- *Class 222 Advanced 2019*
- *Voyager Advanced 2019*
- *Class 153 DMU Advanced*

Steam

- *Network SouthEast Class 159 DMU Add-On*

Armstrong Powerhouse

- *Class 43 (MTU)/Mk3 Enhancement Pack*
- *Class 150/2 Diesel Multiple Unit Pack*
- *Class 158/159 (Cummins) Enhancement Pack*

Test Train to Derby

Drive 31233 on an overnight test train, returning to Derby on a drab autumn morning.

Required stock:

Just Trains

- *Voyager Advanced 2019*
- *Class 222 Advanced 2019*
- *Class 153 DMU Advanced*

Steam

- *BR Class 31 Loco Add-On*
- *Network SouthEast Class 159 DMU Add-On*

Armstrong Powerhouse

- *Class 158/159 (Cummins) Enhancement Pack*
- *Class 43 (VP185)/Mk3 Enhancement Pack*

1Q34 Derby RTC – Hull

Drive the New Measurement Train (HST) from Derby RTC to Sheffield on a glorious morning in May 2019.

Required stock:

Just Trains

- *Class 153 DMU Advanced*
- *Voyager Advanced 2019*
- *Class 222 Advanced 2019*

Steam

- *Network SouthEast Class 159 DMU Add-On*

Armstrong Powerhouse

- *Class 43 (MTU)/Mk3 Enhancement Pack*
- *Class 158/159 (Cummins) Enhancement Pack*
- *Class 158 (Perkins) Enhancement Pack*

5Z20 13:35 Crofton – Derby Etches Park

Drive 20142 towing 222 101 from Crofton Depot to Derby Etches Park on 19 December 2013, as per real events on that day. Note that AI timings are semi-fictional, although this move did actually take place!

Required stock:

Just Trains

- *Class 20 Advanced Collection*
- *Voyager Advanced 2019*
- *Class 222 Advanced 2019*
- *Class 60 Advanced & Freight Wagons*
- *Class 153 DMU Advanced*

Steam

- *Freightliner Class 66 v2.0 Loco Add-On*

Armstrong Powerhouse

- *JNA-C Wagon Pack*
- *BAA/BZA Wagon Pack*

Standard scenarios using default Train Simulator stock

[Default] 1F01 0717 Derby – Sheffield

Good morning, driver. Release the doors and set up the cab ready for your 0717 departure. You'll call at Belper, Chesterfield, Dronfield and Sheffield. Please note that there is a lot of extra padding added to the timetable so you'll probably arrive a few minutes early. Have a safe trip!

[Default] 1C13 06:00 Sheffield – St Pancras International

You are rostered to drive 1C13 as far as Derby. Having driven your loco in as an ECS from Neville Hill, your driving hours permit you to drive only so far south before heading back north later on in the day. Please allow your waiting passengers to board and depart at 06:00. You will call at Chesterfield on the way.

[Default] 1C35 10:29 Sheffield – St Pancras International

Good morning, driver. Today is a simple run down as far as Derby. You will call at Chesterfield en route before arriving at Derby for a crew change.

[Default] 1Y26 17:17 Nottingham – Leeds

Good evening, driver. You are in charge of this Nottingham to Leeds service as far as Sheffield. You join the service at Clay Cross North Junction.

[Default] 4E26 Dollands Moor Sidings – Scunthorpe Redbourne Sidings

Good afternoon, driver. You join 4E26 just alongside Etches Park. You will be required to call into Derby station before travelling north to Sheffield. A driver change will take place when you arrive at Sheffield. Please note that you are currently running approximately 20 minutes late. Your maximum permitted speed for this run is 75 MPH. Try your best to claw back some lost time.

[Default] 6M83 Doncaster Belmont – Bescot Yard

Drive an empty rake of wagons bound for Bardon Hill. You join the working just outside Sheffield station. You will run as far as Derby, where a crew change is scheduled.

[Default] 1997: 1F38 10:00 St Pancras – Sheffield

Drive a Midland Main Line HST from Derby to Sheffield in the summer of 1997.

[Default] 1R86 11:57 Norwich – Liverpool Lime Street

Drive 156 408 on 1R86 from Clay Cross to Dore and Totley via Sheffield in September 2019.

[Default] 6M83 Tinsley Yard GBRF – Bardon Hill GBRF

Drive an empty rake of wagons bound for Bardon Hill. You join the working just outside Sheffield station. You will run as far as Derby, where a crew change is scheduled.

[Default] 1Y99 2003 Leeds – Nottingham

Good evening, driver. Today you'll be taking one of two Leeds – Nottingham services which go via Derby instead of via the Erewash Valley Line. You'll call at Dronfield, Chesterfield and Derby before handing over to another driver. Have a safe trip!

[Default] 1C00 07:25 Sheffield – St Pancras

Drive a Class 222 Advanced on the 07:25 from Sheffield as far as Derby in the Summer of 2019.

[Default] 1E67 16:40 Paignton – Leeds

Drive a CrossCountry HST on 1E67 16:40 Paignton to Leeds from Derby to Sheffield in June 2019.

Free Roam scenarios

Click a train and take it for a drive!

Sheffield Free Roam

Derby Free Roam

Note: As these are Free Roam scenarios you must remember to ensure that the route has been set correctly to avoid being directed into sidings or derailed on junctions set against the train.

QUICK DRIVE

This route is equipped for use with the Quick Drive option in Train Simulator.

To access this option from the Main Menu, press the 'Drive' button and then the 'Quick Drive' tab at the top left.

The Quick Drive menu

The top left area on the menu is where you select the train you wish to drive.

When you click on the menu directly to the right of the train picture, it shows the variations/consists available for the selected train displays in the right-side area of the menu. Click on the consist that you want to drive.

Changing your train

If you want to drive a different train, click back on the top left train picture. The right side of the menu will change and will display all the trains you have installed in Train Simulator.

Use the 'Page' button located at the top middle of the pictures to scroll through them all.

All installed trains which have Quick Drive enabled are displayed. If the train does NOT have Quick Drive enabled, it will NOT be displayed in the Quick Drive menu.

Selecting your route

When you have selected the train and consist you wish to drive, you then need to select the route.

In the middle left area are the route selection menus. Click on the middle far left route picture. This will change the right-side area of the menu to display the routes that you have installed in Train Simulator.

Choosing departure and arrival stations

Click on the route 'map' image directly to the right of the route picture. This will then show the available departure and arrival points for the route. You can select them by clicking on the ones you want.

Changing the time and weather

Controls for changing the time of day and weather conditions are on the lower left area. You can use these to adjust the time and weather settings as you wish.

Driving

When you have made all your selections, press the 'Drive' button on the lower right side of the menu and Train Simulator will load your settings.

IMPORTANT – Filters

In the Standard and Free Roam ‘Drive’ menus there are various locomotive and route filter options along the top of the right side. We strongly recommend that these are all set to ‘None’ unless you are experienced in using them.

If you set a filter and forget to remove it, there is a strong possibility that not all the available locomotives and/or routes will be displayed in the menu.

CREDITS

Route developer

Mark Walker

Custom objects

Alexander Penfold, William Stead, Tom Williams

Scenarios

Ash Clark, Thomas Harrison, Mark Walker

Quick Drive scenarios

Max Mortimer

Just Trains

Project Management	Alex Ford
Installer	Martin Wright
Artwork	Fink Creative
Manual	Alex Ford
Technical Support	Craig Haskell
Customer Service	Simon King

Special thanks to EMR driver Kerry Hewitt

Special thanks also to all the testers

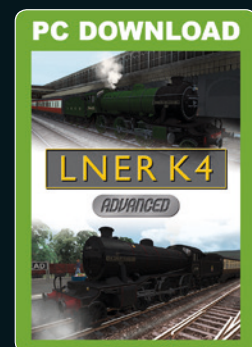
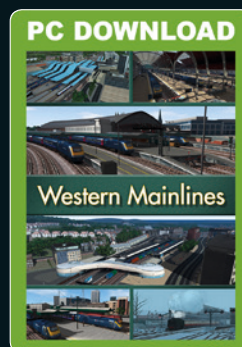
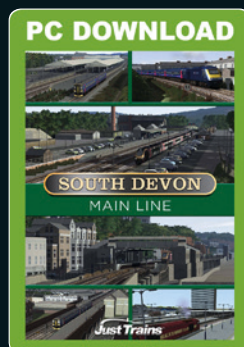
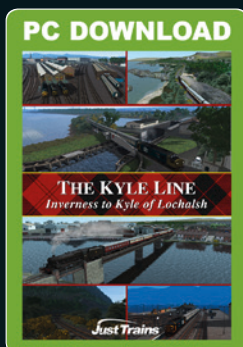
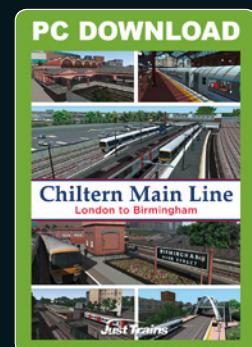
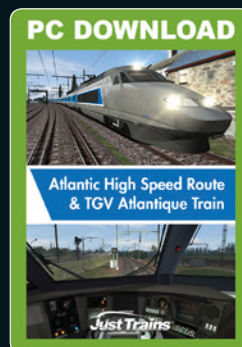
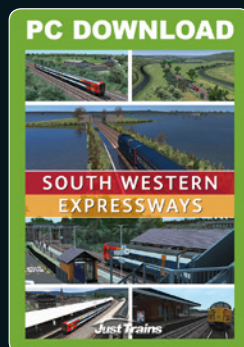
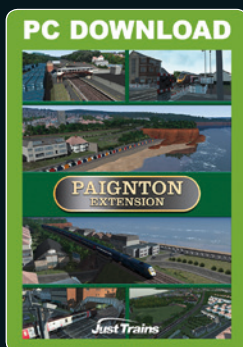
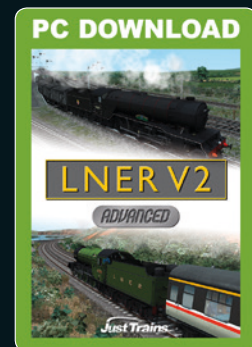
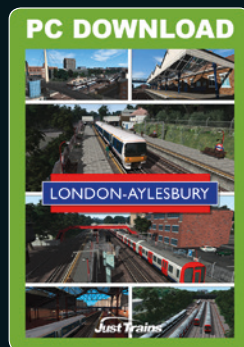
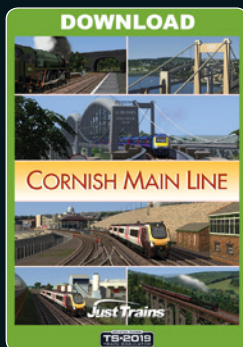
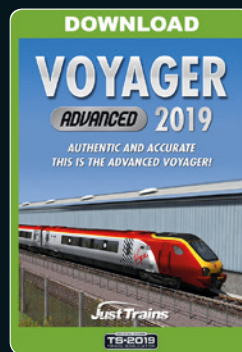
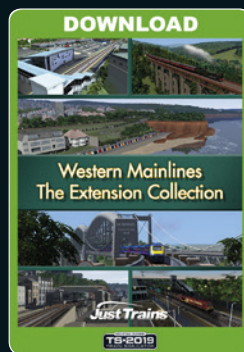
COPYRIGHT

©2019 Just Trains. All rights reserved. Just Trains and the Just Trains logo are trademarks of JustFlight London Limited, St. George's House, George Street, Huntingdon, PE29 3GH, UK. All trademarks and brand names are trademarks or registered trademarks of the respective owners and their use herein does not imply any association or endorsement by any third party.

Note: One or more textures on some of the 3D models in this product have been created with images from Textures.com. These images may not be redistributed. Please visit [Textures.com](https://www.textures.com) for more information.



The Spirit of Train Simulation



Available to buy online at www.justtrains.net

Just Trains™
www.justtrains.net

