



MIDLAND MAIN LINE

DERBY – NOTTINGHAM – LEICESTER



ROUTE GUIDE

Just Trains™

More Train Simulator add-ons from Just Trains



***Midland Main Line:
Derwent Valley Line***



***Midland Main Line:
Sheffield-Derby***



Metropolitan Line



***S7+1 Advanced -
Underground Stock***



***S8 Advanced -
Underground Stock***



Class 222 Advanced 2019



***Chiltern Main Line:
London-Birmingham***



ZZA Snowplough

MIDLAND MAIN LINE

DERBY – NOTTINGHAM – LEICESTER

Route Guide

Route expansion for Train Simulator

CONTENTS

INTRODUCTION	4
Train Simulator requirements.....	5
Scenery quality and display settings.....	5
Run in 64-bit mode!.....	5
INSTALLATION, UPDATES AND SUPPORT	6
STATIONS.....	7
FEATURES TO LOOK OUT FOR ON THE ROUTE.....	14
SCENARIOS.....	41
Standard scenarios requiring additional payware stock	43
Standard scenarios using default Train Simulator stock.....	51
Standard scenarios requiring additional payware stock – for the Extension version ONLY	53
Standard scenarios using default Train Simulator stock – for the Extension version ONLY	55
Free Roam scenarios.....	56
QUICK DRIVE	56
CREDITS	58
COPYRIGHT.....	58

INTRODUCTION

This manual covers both editions of Just Trains' Derby-Nottingham-Leicester route:

- **Midland Main Line: Derby-Nottingham-Leicester Extension**

This version is for drivers who already have the Just Trains Midland Main Line: Sheffield-Derby route installed in Train Simulator.

- **Derby-Nottingham-Leicester**

This 'stand-alone' version does NOT require the Just Trains Midland Main Line route to be installed in Train Simulator.

This 40-mile section of the Midland Main Line runs between Derby at the northern end and Leicester at the southern end.

The route is Quick Drive enabled and includes twelve stations and numerous new custom assets.

39 Standard scenarios are included for the Midland Main Line Extension edition of this route – i.e. for drivers who have the Just Trains Midland Main Line: Sheffield-Derby route installed.

29 Standard scenarios are included for the 'stand-alone' Derby-Nottingham-Leicester route.

Some of these included scenarios require additional payware add-ons to run correctly and others only require the default Train Simulator stock.

Several Free Roam scenarios are also included.

See the [SCENARIOS](#) section for all the details.

Derby-Nottingham-Leicester stations



Train Simulator requirements

If you purchased Train Simulator after 20 September 2012 you will require the European Loco & Asset Pack (available to purchase via [Steam](#)) for this route to display correctly and for some scenarios to work.

Some of the scenarios supplied with this Derby-Nottingham-Leicester route require rolling stock that is not supplied with this software. Full details of the rolling stock required for each scenario are provided in the [SCENARIOS](#) section of this manual.

Scenery quality and display settings

Various effects and techniques have been used in the modelling of Derby-Nottingham-Leicester to enhance the realism of the route, including TSX technology for realistic night lighting effects.

We recommend running the route with 'Procedural Flora' turned off via Settings > Graphics > Advanced > Next and then Save.

Due to the high level of detail which has been modelled, it is best to run the route at the highest settings your PC can manage. Settings can all be accessed via the Settings > Graphics menu in Train Simulator. The route will still run at lower settings, of course, but some of the assets may not be displayed as intended.

Run in 64-bit mode!

We strongly advise you to run Train Simulator in 64-bit mode to enhance its stability:

1. Run the Steam client and select 'Games' from the top menu.
2. Select 'Train Simulator' from the left-side menu and press the blue 'PLAY' button in the top centre of the window. The option to 'Play Train Simulator' or 'Play Train Simulator 64-bit Edition' will pop up.
3. Select the 64-bit option and press 'Play'.



INSTALLATION, UPDATES AND SUPPORT

You can install this add-on as often as you like on the same computer system. To re-download the Derby-Nottingham-Leicester software:

1. Click on the 'Account' tab on the [Just Trains](#) website.
2. Log in to your account.
3. Click on the 'Your Orders' button.
4. A list of your purchases will appear and you can then re-download the software you require.

Uninstalling

To uninstall this product from your system, select the appropriate option for your version of Windows from the Control Panel:

- 'Add or Remove Programs' (Windows XP)
- 'Programs and Features' (Windows Vista or 7)
- 'Apps & features' (Windows 10 or later)

Choose the product you want to uninstall and then select the 'Uninstall' option; follow the on-screen instructions to uninstall the software.

Uninstalling or deleting this software in any other way may cause problems when using this product in the future or with your Windows set-up.

Updates and Technical Support

For technical support (in English) please visit the [Support](#) pages on the Just Trains website.

As a Just Trains customer you can obtain free technical support for any Just Trains or Just Flight product.

If an update becomes available for this software, we will post details on the Support page and will also send a notification email about it to all buyers who are currently subscribed to our emails.

Regular News

To get all the latest news about Just Trains products, special offers and projects in development, [sign up](#) for our regular emails.

We can assure you that none of your details will ever be sold or passed on to any third party and you can, of course, unsubscribe from this service at any time.

You can also keep up to date with Just Trains via [Facebook](#) and [Twitter](#).

STATIONS

Derby



Opened 1839

Passengers 2018-2019: 3.902 million

Spondon



Opened 1839

Passengers 2018-2019: 18,726

Long Eaton



Opened 1839

Passengers 2018-2019: 0.619 million

Attenborough



Opened 1856

Passengers 2018-2019: 99,484

Beeston



Opened 1839

Passengers 2018-2019: 0.556 million

Nottingham



Opened 1848

Passengers 2018-2019: 8.005 million

Nottingham station is a large facility in the centre of the city. The city's tram system runs directly over the centre of the station.

East Midlands Parkway



Opened 2009

Passengers 2018-2019: 0.361 million

Loughborough



Opened 1840

Passengers 2018-2019: 1.385 million

Barrow-upon-Soar



Opened 1840

Passengers 2018-2019: 91,964

Sileby



Opened 1840

Passengers 2018-2019: 127,642

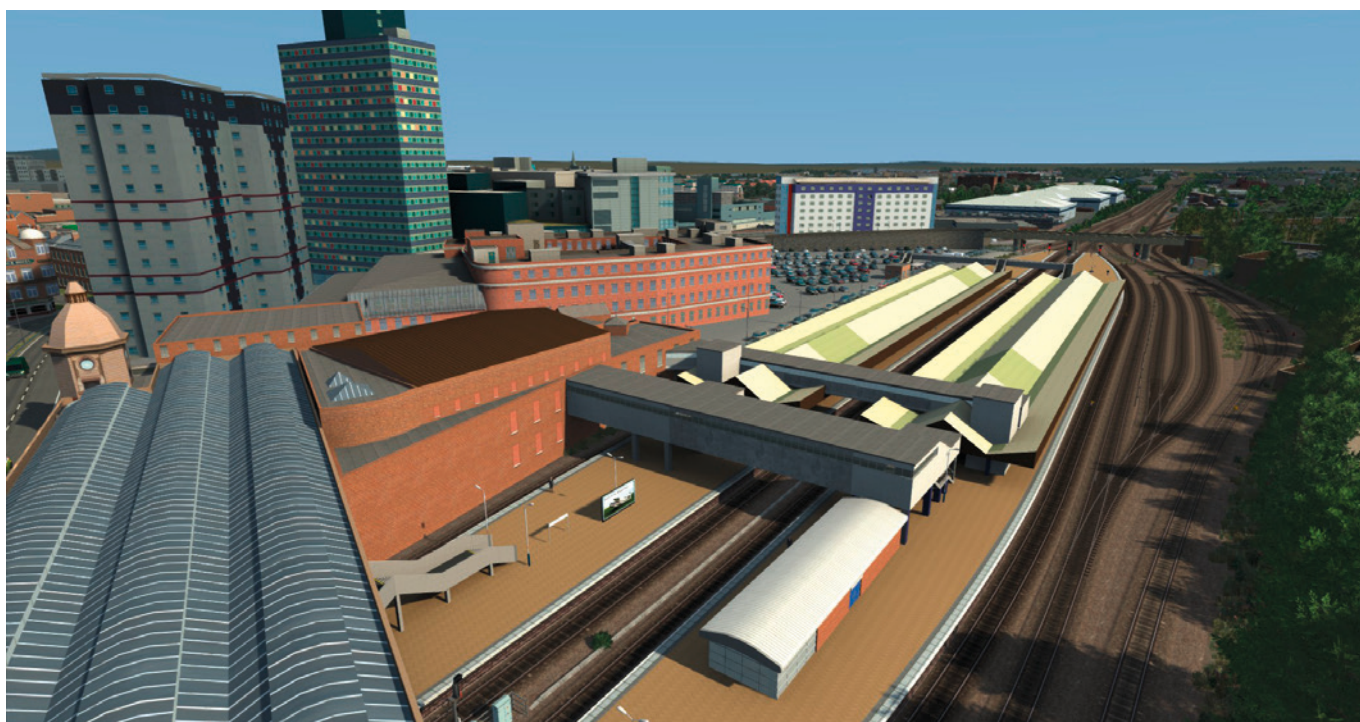
System



Opened 1840

Passengers 2018-2019: 0.225 million

Leicester



Opened 1840

Passengers 2018-2019: 5.582 million

FEATURES TO LOOK OUT FOR ON THE ROUTE

Numerous landmark buildings and other features of interest have been modelled along the length of the route – these are some of them, listed in the order you'd see them when driving south from just north of Derby:

Breadsall Junction



This is on the approach to Derby where the Up Slow line diverges and Breadsall Loop rejoins the Midland Main Line.

Breadsall bridge



This is a modern road bridge of concrete and brick design.

St. Mary's bridge



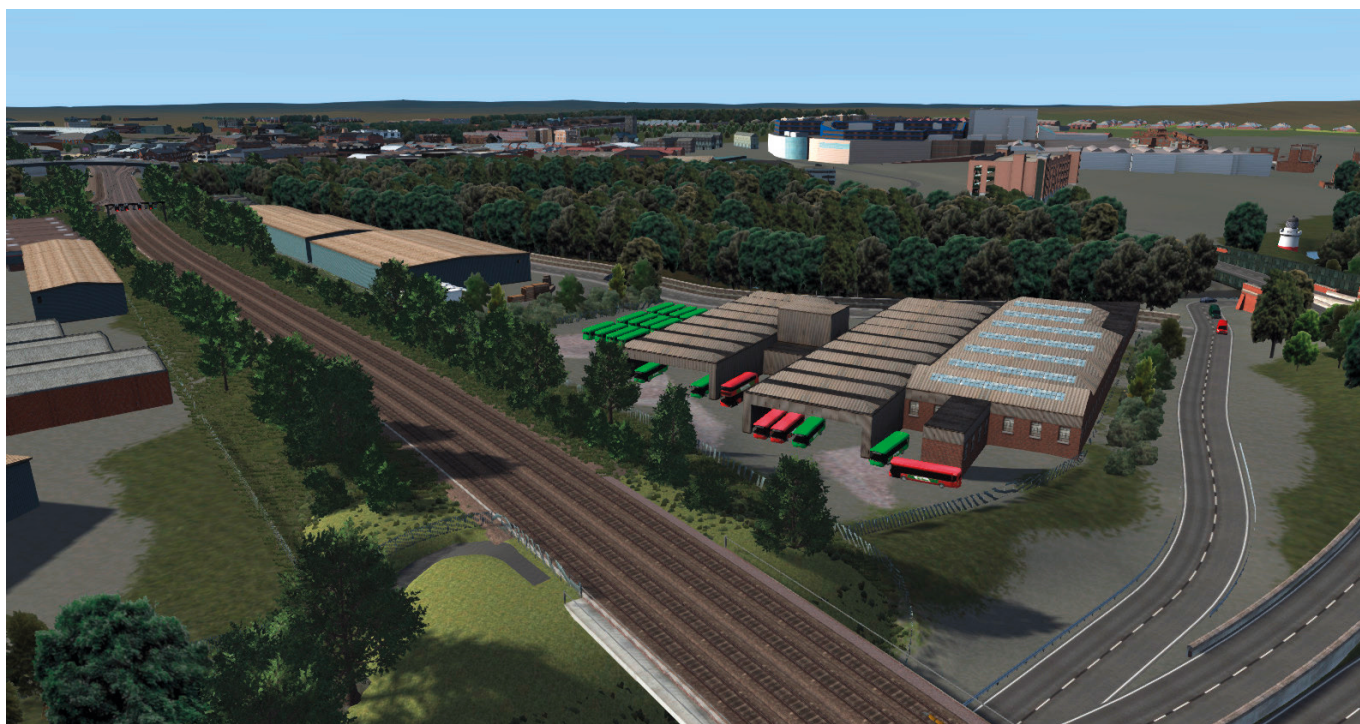
This road bridge has three arches, under each of which a railway line passes. A modern arched footbridge is located to one side of the approach to the bridge.

Underpass and Derby NHS offices



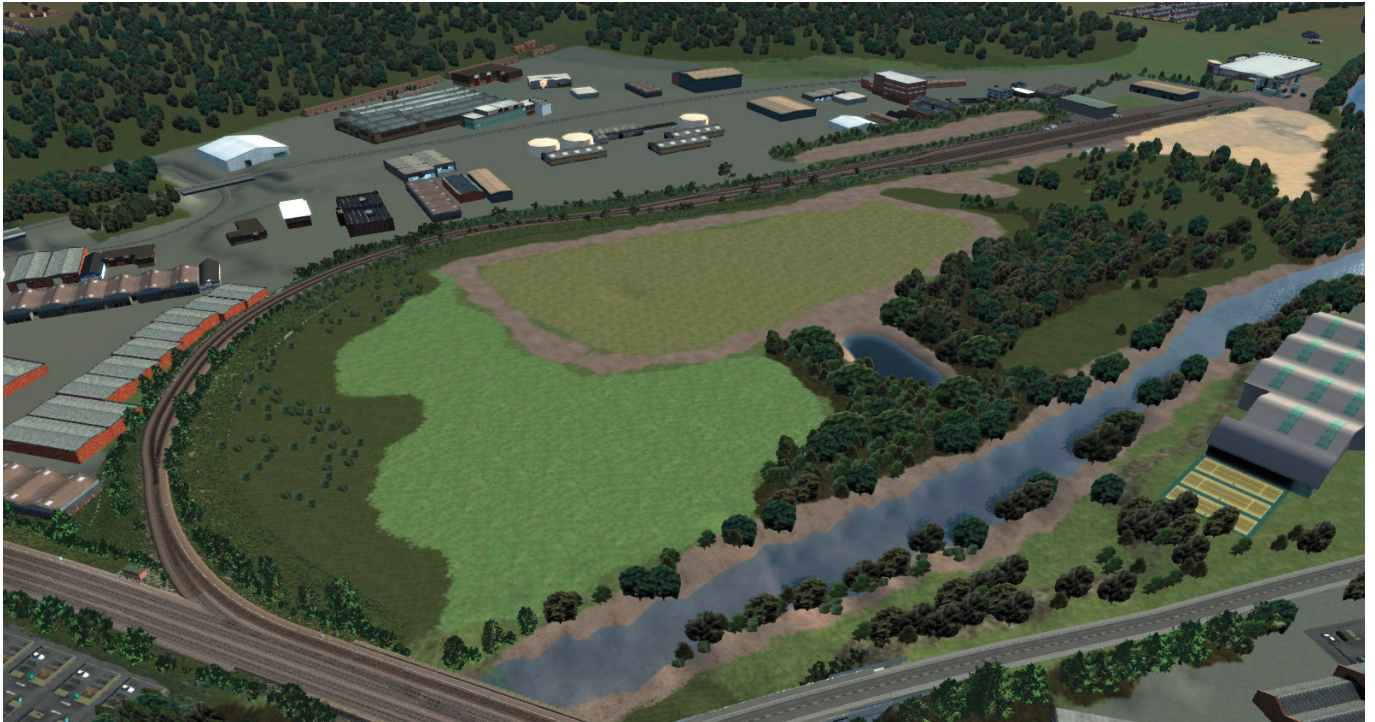
The A52 underpass goes under the railway at this point, just opposite some NHS offices.

Derby bus depot



Derby's bus depot can be seen beside the railway track.

Chaddesden Yard



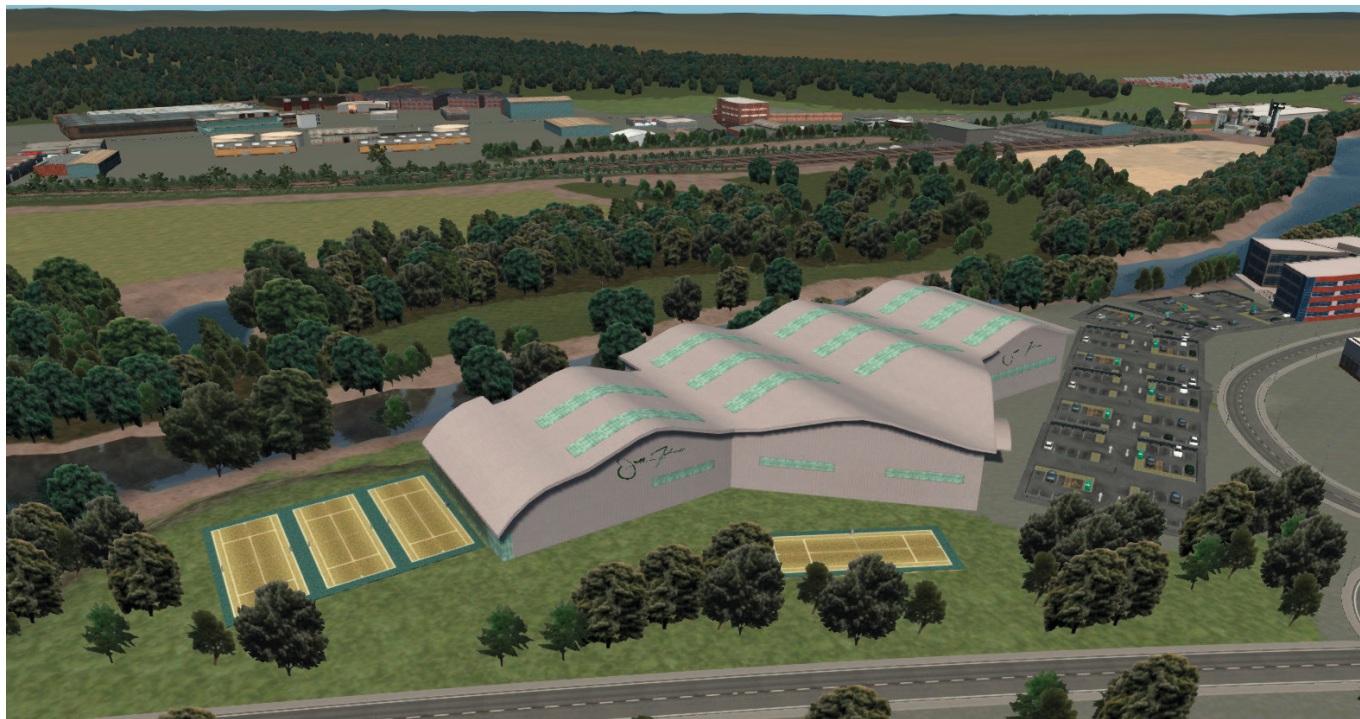
This yard to the north of Derby station is on the former avoiding line which bypassed Derby until its closure. Nowadays the yard is used for freight workings and wagon storage.

Pride Parkway bridge



At this point the railway goes under the Pride Parkway road bridge.

Health club – Derby



This distinctive building is visible from the railway and is just a short distance from Derby station.

John Ellis House



These Network Rail offices are on the right just to the north of Derby station.

Derby College



The flagship Roundhouse site of this further education centre is situated next to the tracks opposite Derby station.

Offices – Derby





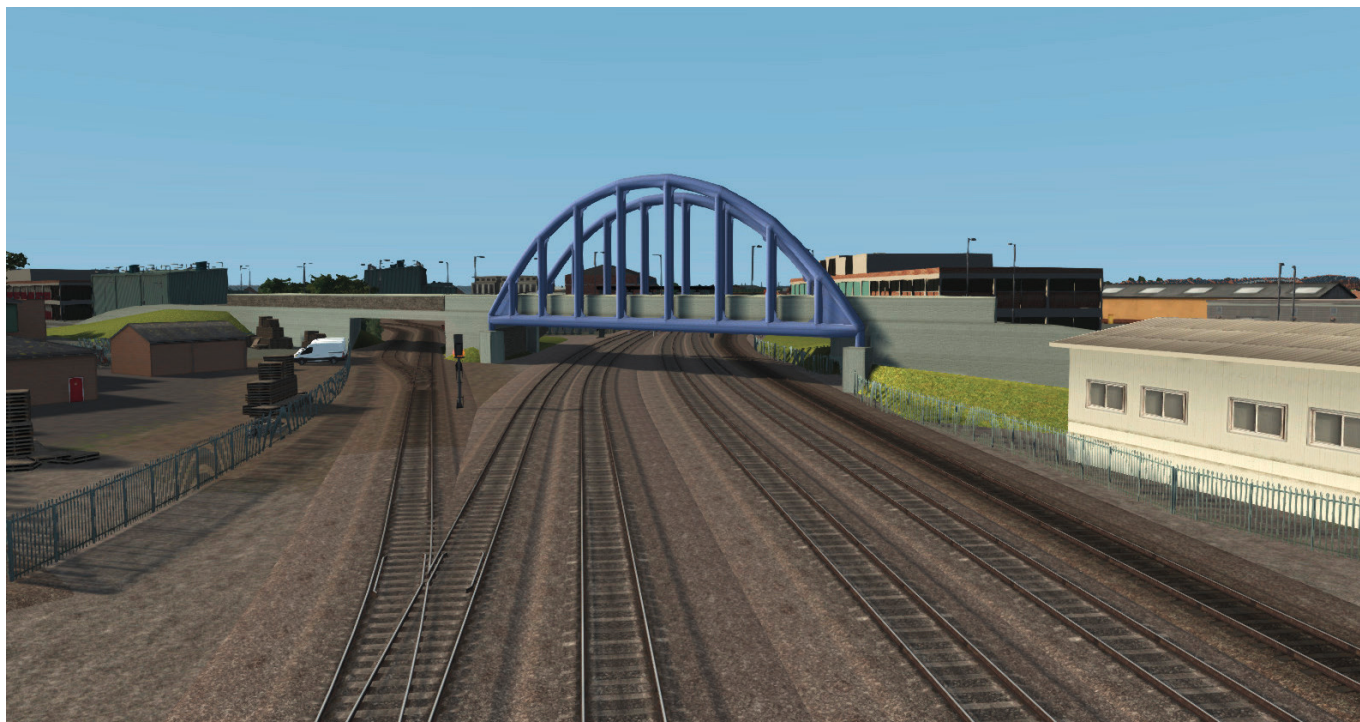
These offices can be seen either side of Derby station.

Hotel – Derby



This hotel lies just a brief walk from Derby station.

London Road bridge



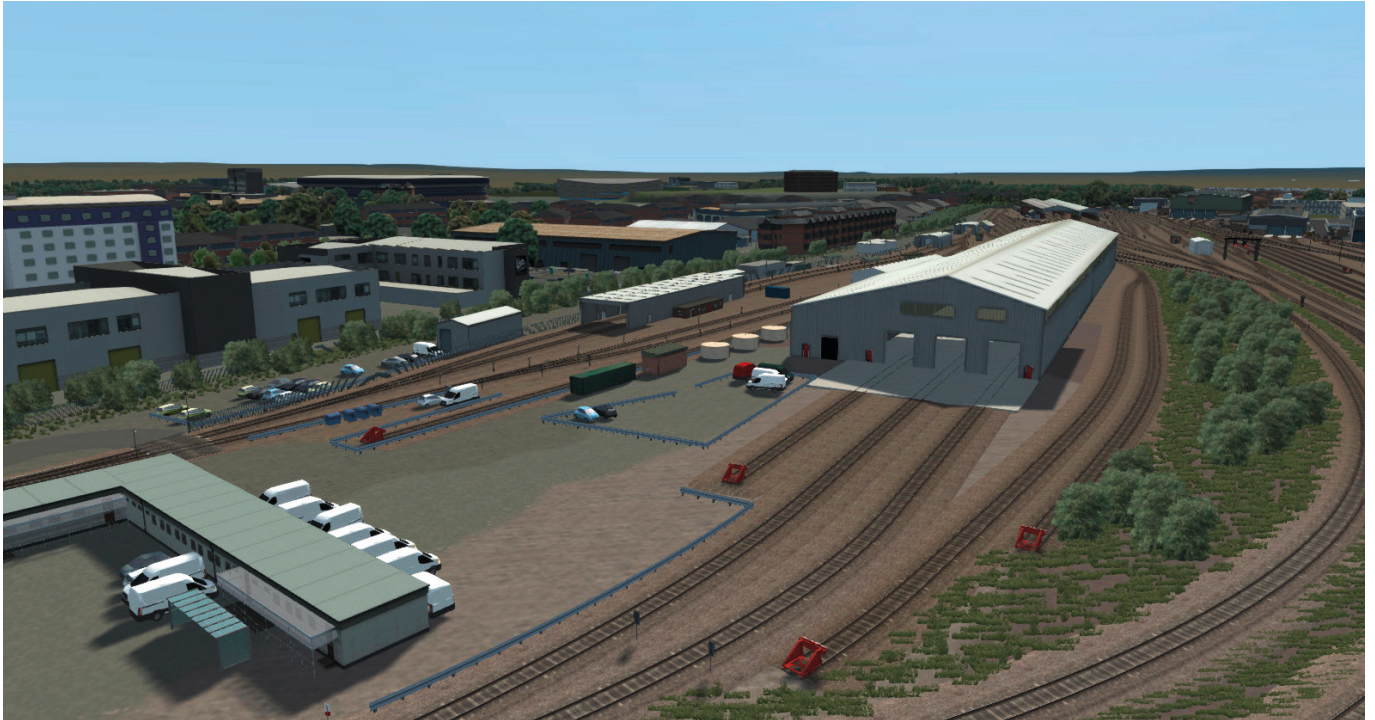
This bridge carries London Road over the railway just south of Derby station.

Derby Power Signal Box



This distinctive building to the right of the track used to house the Derby Power Signal Box.

Etches Park



This Traction & Rolling Stock Maintenance Depot is used by the East Midlands Railway and is where their fleet of Class 222 units is stabled when not in service. The facility includes two large sheds and a number of running lines as well as fuel and washing facilities.

Derby Rail Technical Centre (RTC)



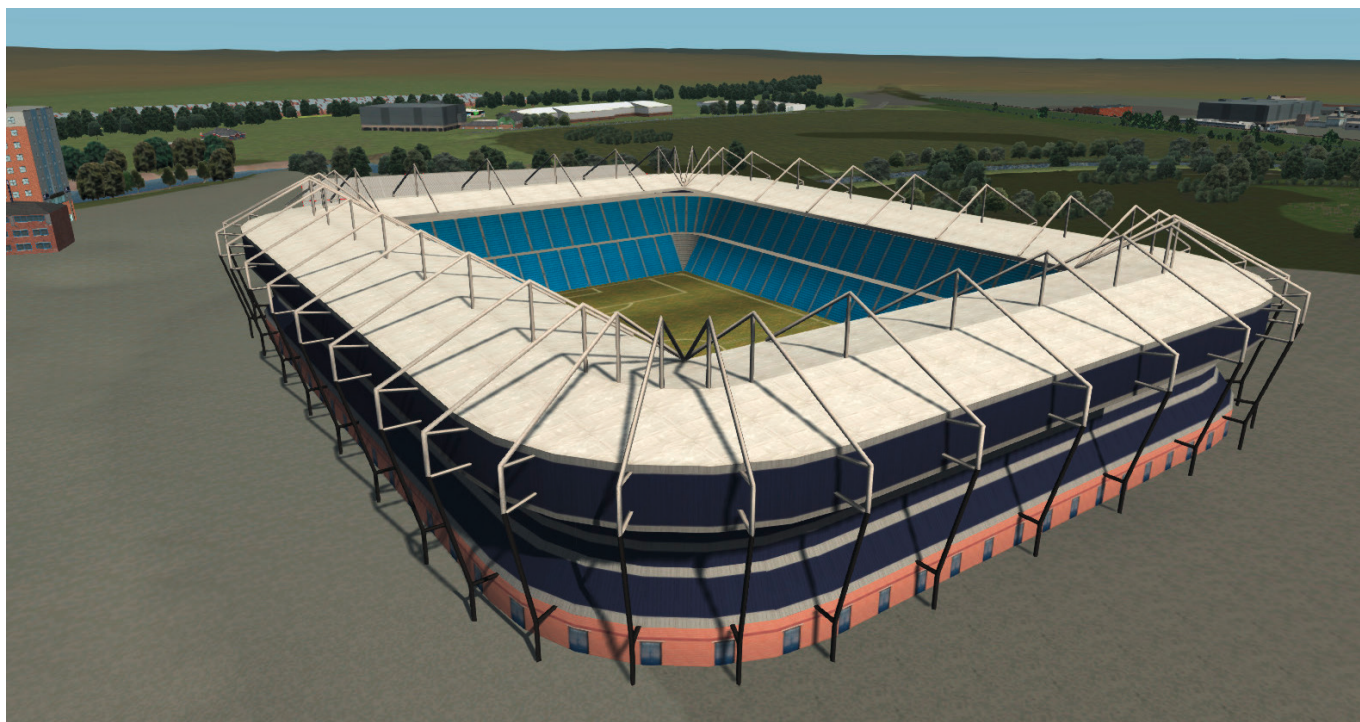
Built in the early 1960s, the Railway Technical Centre (RTC) used to be the technical headquarters of the British Railways Board and was described as the largest railway research complex in the world. It is currently home to Network Rail's fleet of test trains. A workshop here allows the overhaul of locomotives for various operators.

Litchurch Lane Works



Litchurch Lane Works (formerly known as the Derby Carriage and Wagon Works) was built by the Midland Railway in the 19th century. The plant has built rolling stock under the ownership of the Midland Railway, LMS, British Railways, British Rail Engineering Limited (BREL), ABB, Adtranz and Bombardier. In recent times a number of Multiple Unit builds have been completed here, including London Underground S8 Stock.

Pride Park stadium



Derby County FC moved here in 1997 from its former home, The Baseball Ground.

A6005 road bridge



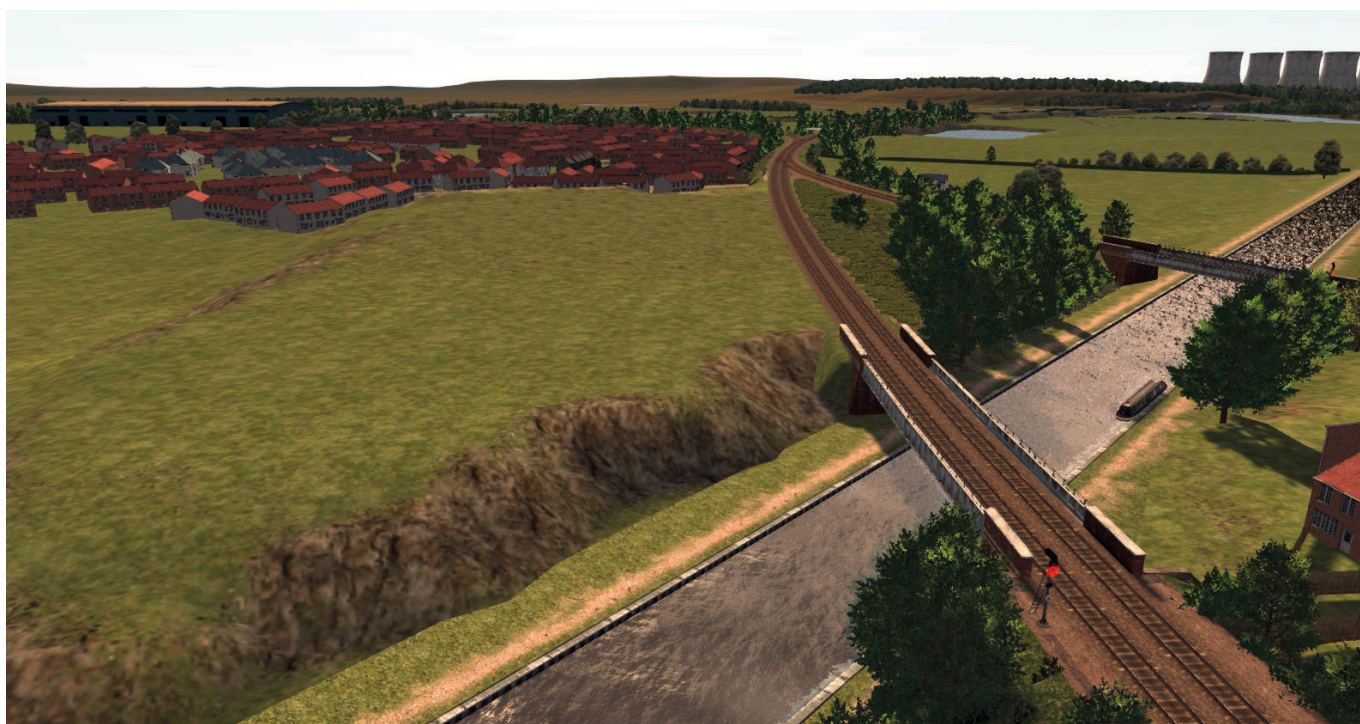
This distinctive bridge carries the A6005 over the line near the village of Draycott.

M1 motorway bridge



This bridge carries the M1 motorway over the line near Long Eaton.

Erewash canal bridge



This bridge carries the line over the Erewash canal to the east of Long Eaton.

Sheet Stores Junction



The Sheet Stores line joins the main line at this junction.

After Long Eaton station the line divides, going south towards Leicester, north-west to Toton TMD and north-east to Nottingham.

The line to the north-west:

Tesco superstore



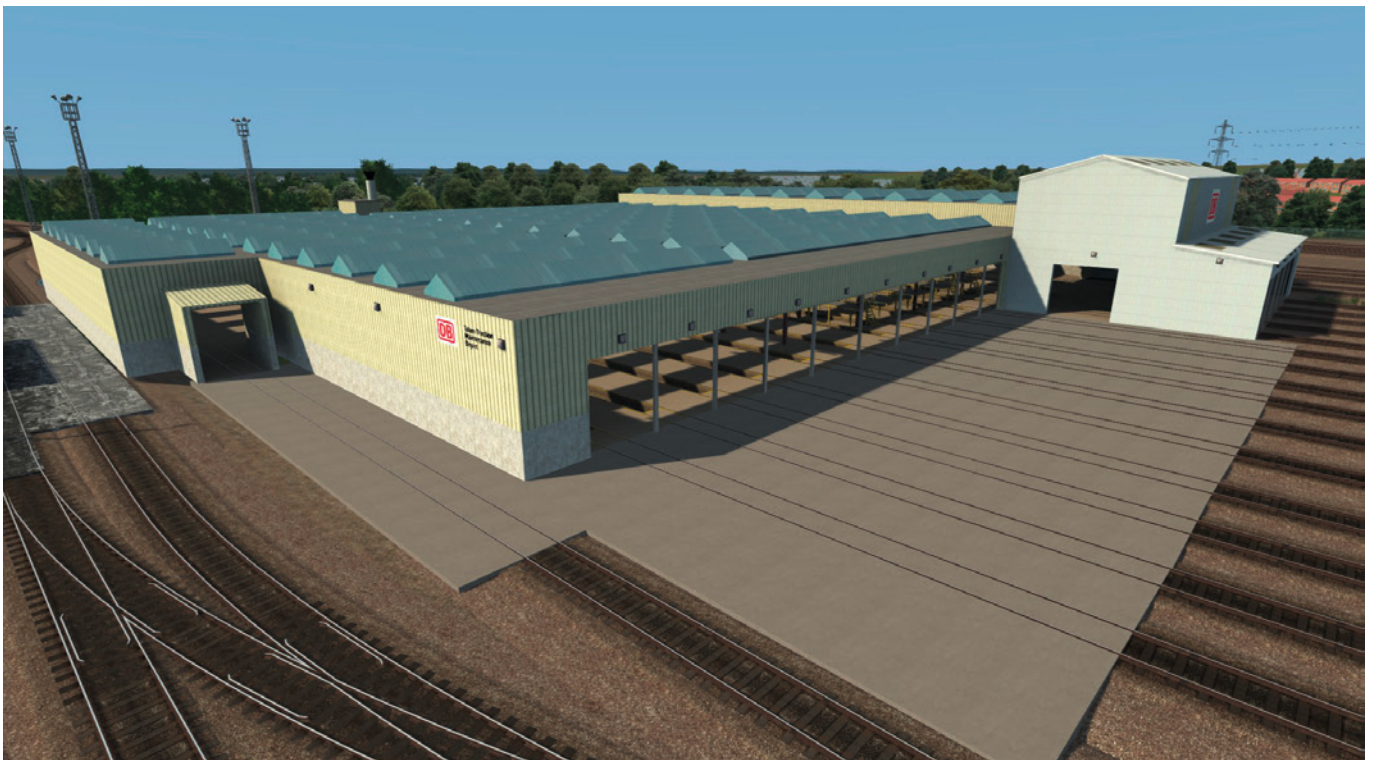
On the left side of the track is a Tesco superstore.

Sainsbury's superstore



A Sainsbury's superstore is visible on the left side of the track.

Toton TMD





Toton Traction Maintenance Depot (also known as Toton Sidings) is one of the largest rail depots in the UK.

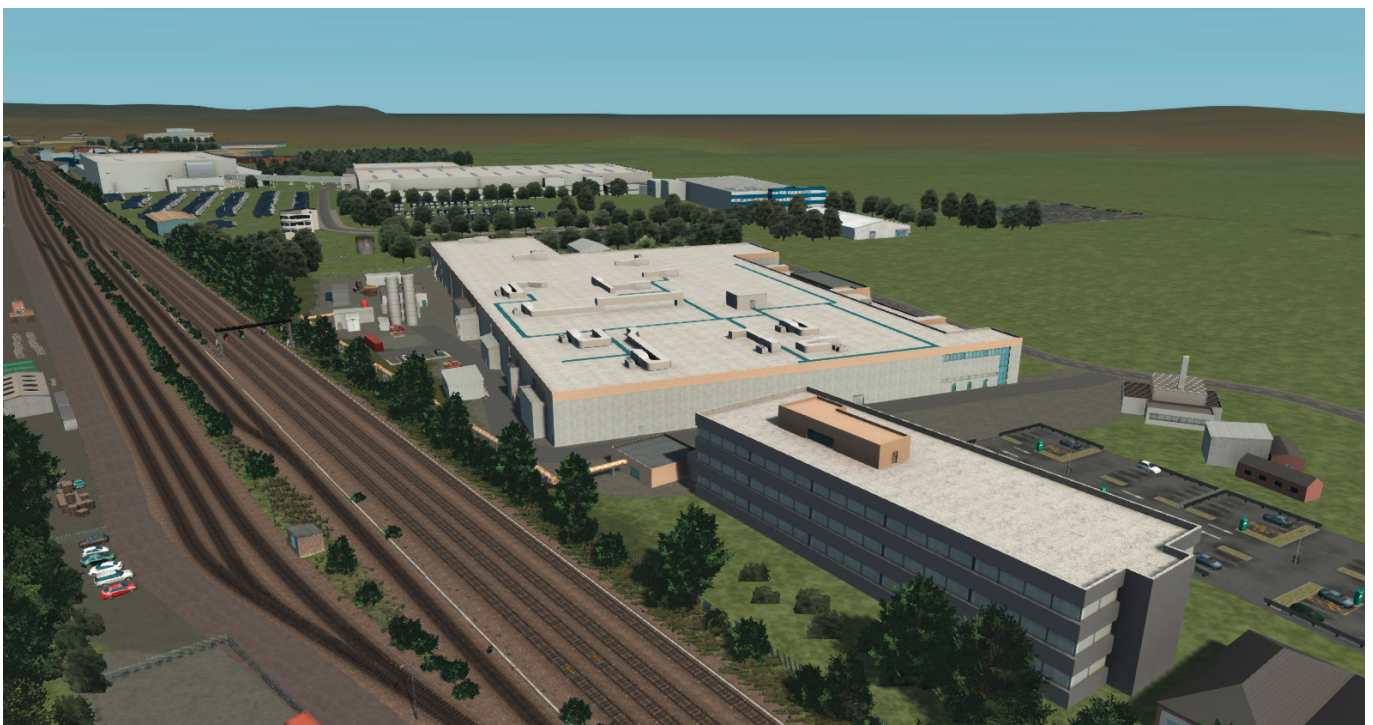
The line to the north-east:

Disused Cemex loader



Here the line passes beside and under a disused transporter that used to belong to Cemex UK.

Boots warehouses



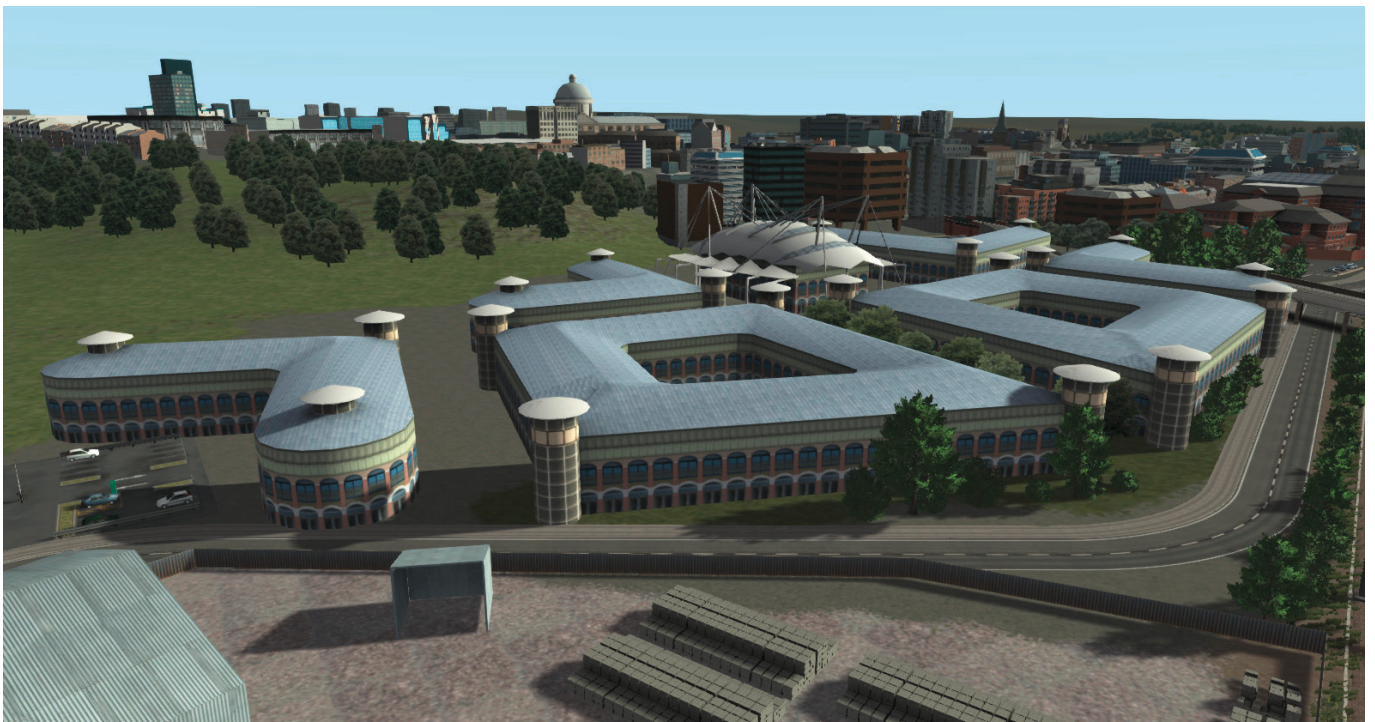
Some Boots warehouses are situated on the southern side of the line.

Beeston Yard



This is where points and track panels are pre-assembled and then placed on trains for delivery.

HMRC buildings



To the north side of the line are buildings housing HM Revenue and Customs offices.

Nottingham Justice Centre



This houses Nottingham Magistrates' Court.

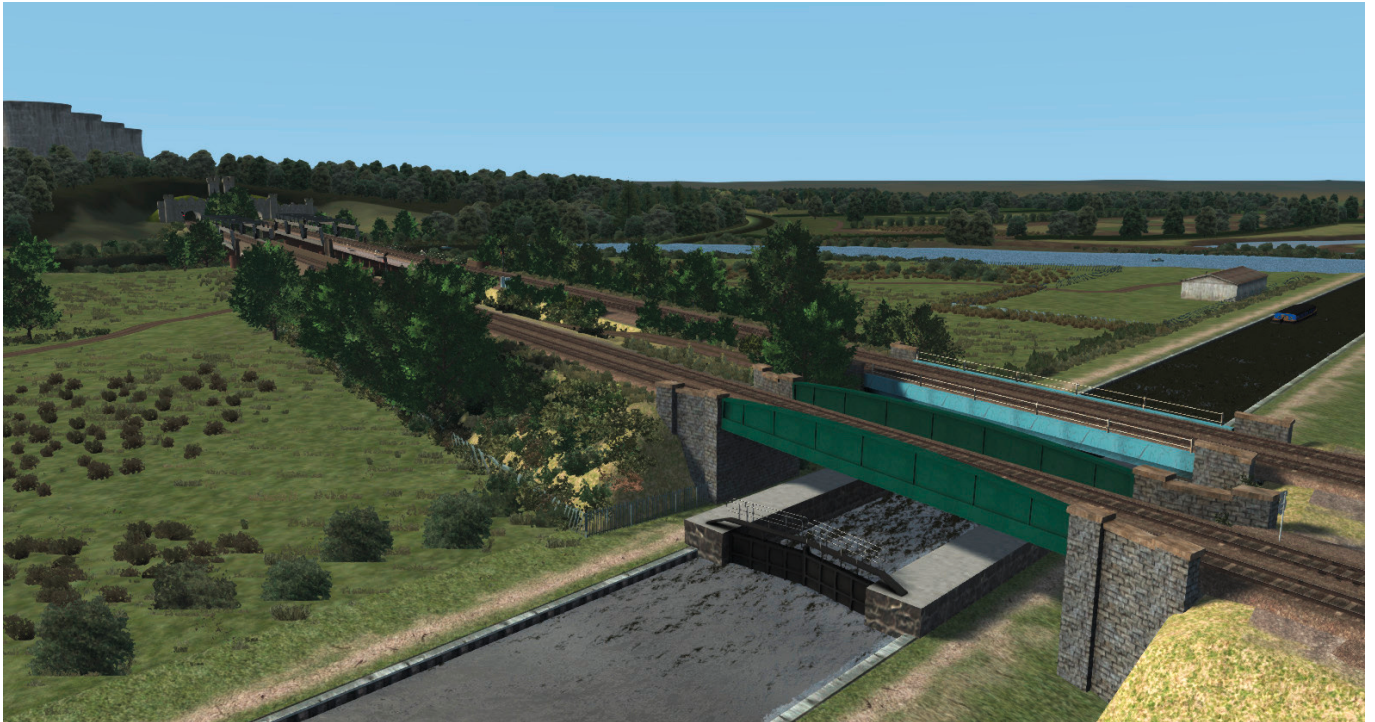
Eastcroft Depot



This light maintenance depot houses the East Midland Railway stabling yard and the Colas Rail depot.

The line to the south:

Cranfleet Canal bridges



These bridges carry the line over the Cranfleet Canal.

River Trent bridges



These bridges carry the line over the River Trent.

Redhill tunnel portals



These very distinctive tunnel portals mark the entrance of the tunnel just before the power station.

Ratcliffe-on-Soar Power Station



This coal-fired power station was commissioned in 1968 and has a capacity of 2,000 MW.

Almost adjacent to East Midlands Parkway station, it dominates the skyline for miles around with its eight cooling towers and 199m (653ft) chimney. It has four coal-fired boilers, each of which drives a 500 megawatt generator set.

The power station is supplied with coal and other bulk commodities by rail from a branch off the adjacent Midland Main Line. The power station railway has its own signalling system.

Site of Hathern station



On the south side of the line is the site of the now disused Hathern railway station, which used to serve the village of Hathern. Originally opened by Midland Counties Railway in 1839, it was closed in 1960.

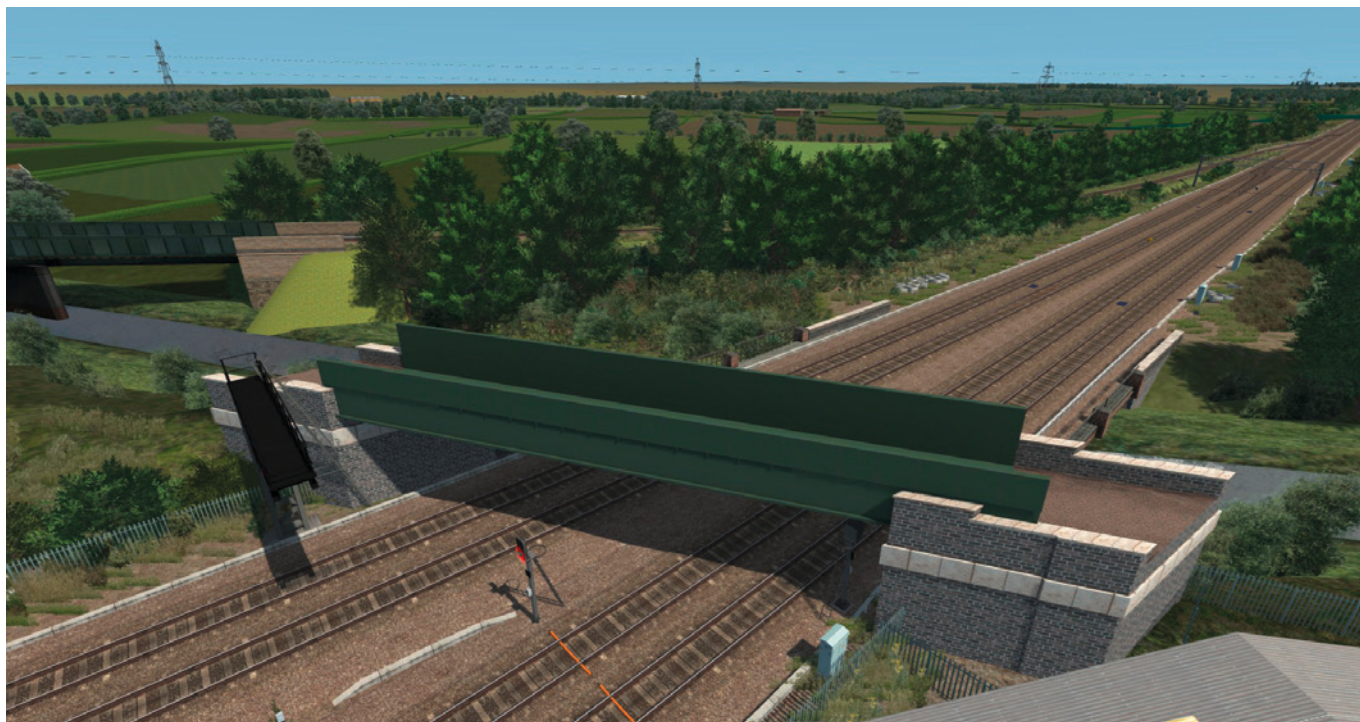
Brush works (Wabtec Corporation)



This is the home of Brush Traction, owned by the Wabtec Corporation. When it opened in 1865, Hughes's Locomotive & Tramway Engine Works Ltd built horse-drawn tramcars and railway rolling stock. The company later reformed as the Falcon Engine & Car Works Ltd, which became the Brush Electrical Engineering Company Limited in 1889.

In 1957 the Brush group was brought by Hawker-Siddeley, becoming Brush Traction, and in 2011 it was acquired by the Wabtec Corporation. The Class 30, 47, 48, 53, 57, 60, 89 92 and Eurotunnel Class 9 locomotives were built at the works.

Site of Great Central Railway new bridge



This is where a new canal bridge will join the northern and southern sections of the Great Central Railway heritage line.

Barrow-upon-Soar cutting



At this point the line passes through the Barrow-upon-Soar cutting.

Mountsorrel Sidings aggregate loader



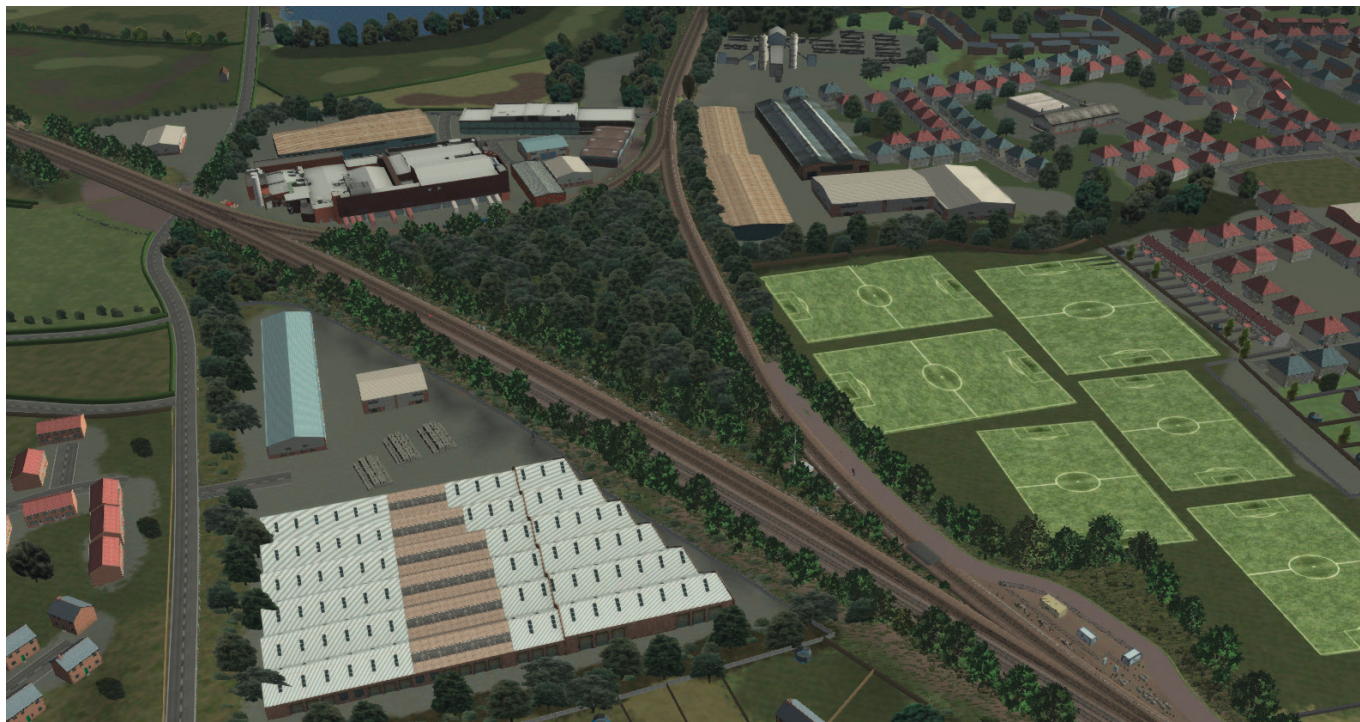
This site is on the right side of the line and is used to load trains with aggregates.

Gypsum works



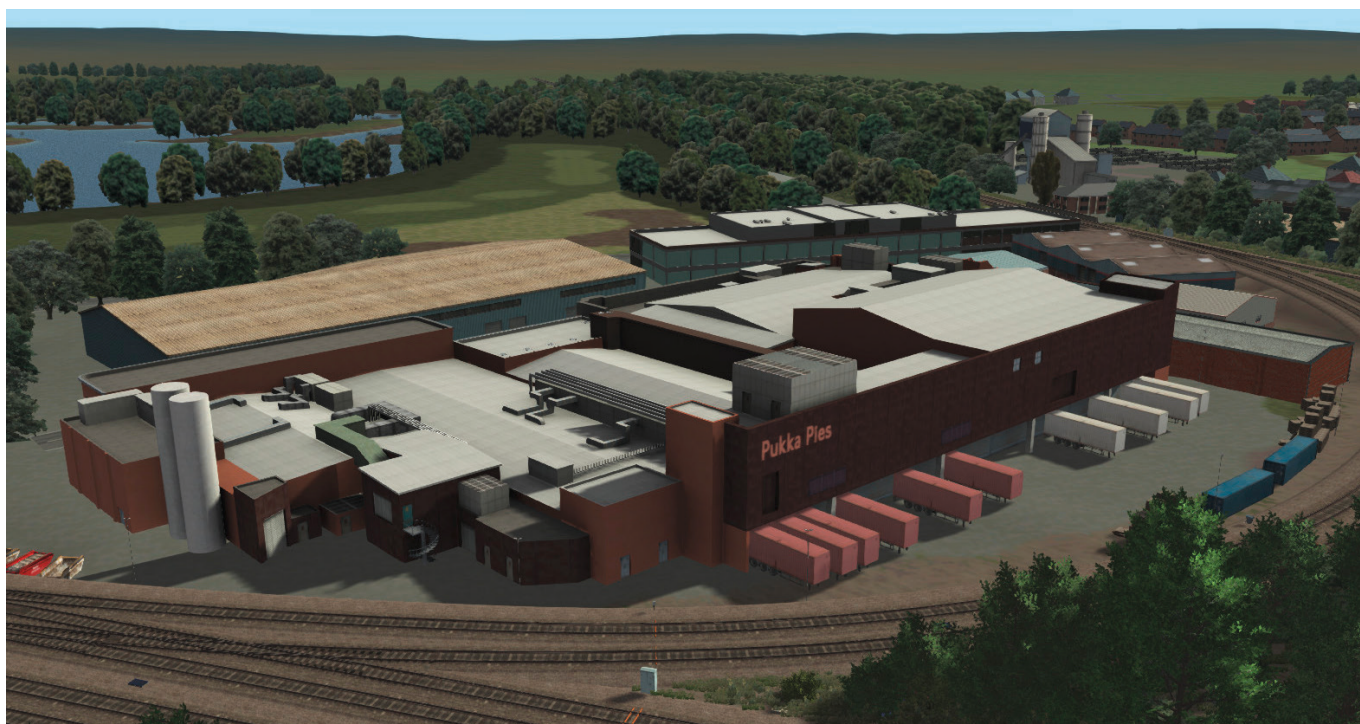
This gypsum production facility features a very distinctively shaped building.

System junction



The line from the junction here heads towards Melton Mowbray and Peterborough.

Pukka Pies site



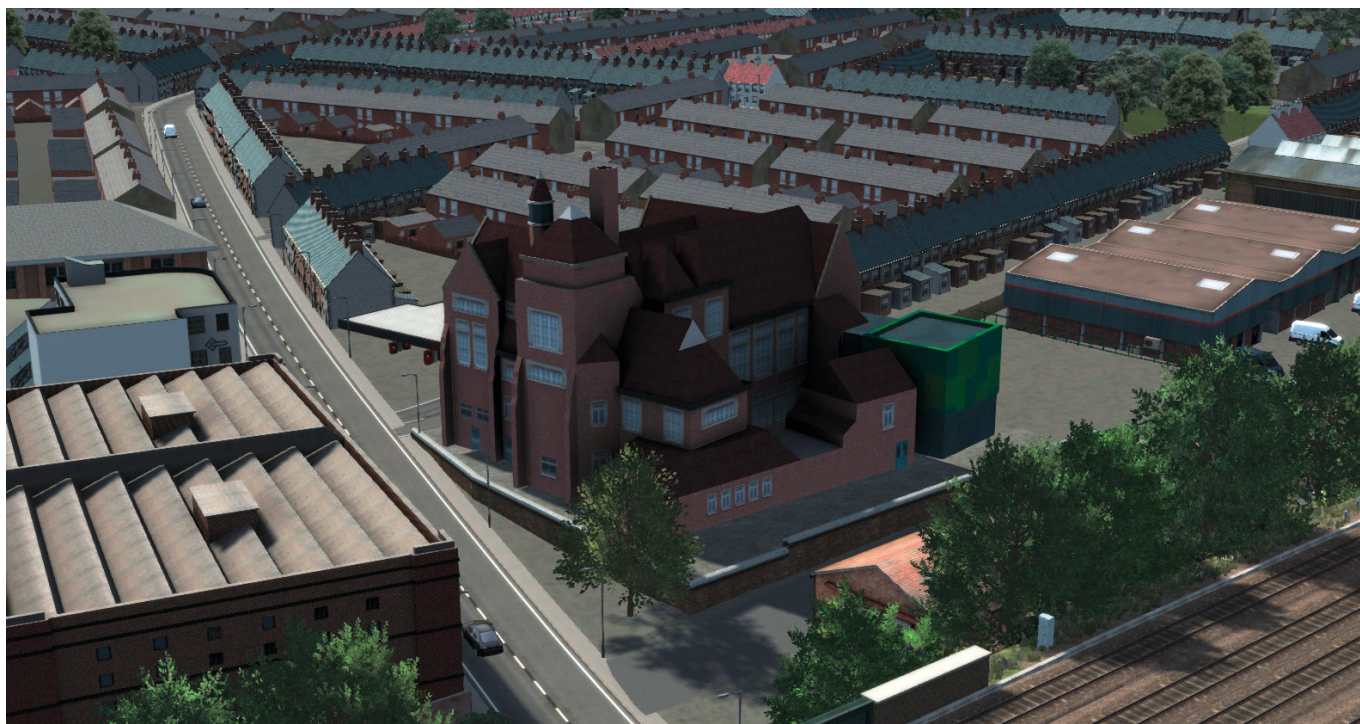
This is the site of the Pukka Pies factory!

Vulcan House



This building, with its tall clock tower, is home to several businesses.

Charnwood School



This building is a primary school.

Leicester Power Signal Box



Leicester Power Signal Box (PSB) was closed in 2012 and its functions were transferred to the East Midlands Control Centre at Derby.

Leicester Depot



This is currently operated by UK Rail Leasing.

Moat Community College



Moat Community College is a secondary school located in Highfields.

SCENARIOS

Choosing a scenario

When you first start Train Simulator, select the 'Drive' option in the Main Menu, then choose either the Standard or the Free Roam scenarios.

Use the scroll bar on the right side to scroll down to 'Just Trains – Midland Main Line' if you have the Extension edition of the route, or 'Just Trains – Derby-Nottingham-Leicester' if you do not have Midland Main Line: Sheffield-Derby installed.

You can now choose your scenario and click on the 'Go' button.

39 Standard scenarios are included for the Midland Main Line Extension edition of this route – i.e. for drivers who have the Just Trains Midland Main Line: Sheffield-Derby route installed.

29 Standard scenarios are included for the 'stand-alone' Derby-Nottingham-Leicester route.

Some of the scenarios only require the default Train Simulator stock (these are prefixed with [Default]) and some require additional payware content.

If you purchased Train Simulator after 20 September 2012, you will require the European Loco & Asset Pack (available to purchase via [Steam](#)) for all the scenarios to operate correctly.

The add-on requirements for each scenario are listed in the descriptions, but here's a list of all the add-ons required to operate those scenarios which require additional payware stock.

Just Trains

- [Midland Main Line: Sheffield-Derby](#)
- [Class 153 DMU Advanced](#)
- [Midland Main Line: Derwent Valley Line](#)
- [Class 60 Advanced & Freight Wagons](#)
- [Voyager Advanced 2019](#)
- [Class 222 Advanced 2019](#)
- [YGB Seacow PlusPak Advanced](#)

Steam

- [Freightliner Class 66 v2.0 Loco Add-On](#)
- [Network SouthEast Class 159 DMU Add-On](#)
- [Settle to Carlisle Route Add-On](#)
- [BR Class 170 'Turbostar' DMU Add-On](#)
- [BR Sectors Class 56 Loco Add-On](#)
- [EWS & Freightliner Class 08s Loco Add-On](#)
- [BR Class 31 Loco Add-On](#)
- [EWS Class 66 v2.0 Loco Add-On](#)
- [West Coast Main Line Over Shap Route Add-On](#)
- [Midland Main Line London-Bedford Route Add-On](#)
- [Freightliner Class 70 Loco Add-On](#)

Armstrong Powerhouse

- [Class 150/2 Diesel Multiple Unit Pack](#)
- [Class 158 \(Perkins\) Enhancement Pack](#)
- [Class 158/159 \(Cummins\) Enhancement Pack](#)
- [Class 43 \(Valenta\)/Mk3 Enhancement Pack](#)
- [Class 43 \(VP185\)/Mk3 Enhancement Pack](#)
- [Class 43 \(MTU\)/Mk3 Enhancement Pack](#)
- [Class 66 Enhancement Pack](#)
- [Class 156 Diesel Multiple Unit Pack](#)
- [FSA/FTA Wagon Pack](#)
- [BAA/BZA Wagon Pack](#)
- [MGR Wagon Pack](#)
- [Class 56 Enhancement Pack](#)
- [Mk1 Coach Pack Vol. 1](#)
- [Mk2D-F Coach Pack](#)
- [Class 31 Enhancement Pack](#)
- [Class 168/170/171 Enhancement Pack](#)
- [HIA Wagon Pack](#)
- [JPA Wagon Pack](#)
- [JHA Wagon Pack](#)
- [JNA-C Wagon Pack](#)
- [Class 37 Locomotive Pack Vol.1](#)

Bossman Games

- [LMS 6P Rebuilt Royal Scot Class](#)

Standard scenarios requiring additional payware stock

These scenarios will work with BOTH editions of the Derby-Nottingham-Leicester route:

- **Midland Main Line: Derby-Nottingham-Leicester Extension**
- **Derby-Nottingham-Leicester**

[DNL] (1995): 1F62 St Pancras-Derby

Drive 31407+31459, deputising for the booked Class 47 on 1F62 17:20 St Pancras to Derby on 24 February 1995. You will be in control from Leicester.

Difficulty: Easy | Duration: 35 minutes

Requirements:

Steam

- Network SouthEast Class 159 DMU Add-On
- BR Class 31 Loco Add-On
- BR Sectors Class 56 Loco Add-On

Armstrong Powerhouse

- Class 158 (Perkins) Enhancement Pack
- MGR Wagon Pack
- Class 56 Enhancement Pack
- Mk1 Coach Pack Vol. 1
- Class 43 (Valenta)/Mk3 Enhancement Pack
- Mk2D-F Coach Pack
- Class 31 Enhancement Pack

[DNL] 1D07 07:04 St Pancras-Nottingham

Drive an HST from Leicester to Nottingham on a hazy morning in June 2019.

Difficulty: Easy | Duration: 30 minutes

Requirements:

Just Trains

- Class 222 Advanced 2019

Steam

- Network SouthEast Class 159 DMU Add-On
- BR Class 170 'Turbostar' DMU Add-On

Armstrong Powerhouse

- Class 43 (VP185)/Mk3 Enhancement Pack
- Class 156 Diesel Multiple Unit Pack
- Class 158 (Perkins) Enhancement Pack
- Class 168/170/171 Enhancement Pack

[DNL] 2L77 16:30 Leicester-Lincoln

Drive a Class 156 from Leicester to Nottingham on a wet evening in February 2019.

Difficulty: Medium | Duration: 60 minutes

Requirements:

Just Trains

- Class 222 Advanced 2019

Steam

- Network SouthEast Class 159 DMU Add-On
- BR Class 170 'Turbostar' DMU Add-On
- EWS Class 66 v2.0 Loco Add-On
- Freightliner Class 66 v2.0 Loco Add-On

Armstrong Powerhouse

- Class 43 (VP185)/Mk3 Enhancement Pack
- Class 156 Diesel Multiple Unit Pack
- Class 158 (Perkins) Enhancement Pack
- Class 168/170/171 Enhancement Pack
- HIA Wagon Pack
- Class 66 Enhancement Pack

[DNL] 5L10 Leicester-Loughborough / 2L10 Loughborough-Leicester

Drive 156473 on an empty coaching stock move to from Leicester to Loughborough, then return to Leicester with the 06:59 stopping service.

Difficulty: Medium | Duration: 60 minutes

Requirements:

Just Trains

- Class 222 Advanced 2019

Steam

- Network SouthEast Class 159 DMU Add-On
- BR Class 170 'Turbostar' DMU Add-On

Armstrong Powerhouse

- Class 156 Diesel Multiple Unit Pack
- Class 158/159 (Cummins) Enhancement Pack
- Class 168/170/171 Enhancement Pack
- Class 43 (VP185)/Mk3 Enhancement Pack

[DNL] 6D31 Radlett-Toton North Yard

Drive 66041 on 6D31 Radlett-Toton North Yard stone empties on 21 August 2018.

Difficulty: Medium | Duration: 65 minutes

Requirements:

Just Trains

- Class 222 Advanced 2019
- Voyager Advanced 2019

Steam

- EWS Class 66 v2.0 Loco Add-On
- BR Class 170 'Turbostar' DMU Add-On

Armstrong Powerhouse

- JPA Wagon Pack
- JHA Wagon Pack
- JNA-C Wagon Pack
- Class 156 Diesel Multiple Unit Pack
- Class 66 Enhancement Pack
- FSA/FTA Wagon Pack
- Class 43 (VP185)/Mk3 Enhancement Pack
- Class 168/170/171 Enhancement Pack

[DNL] 1B28 09:45 Nottingham - 11:24 St Pancras International

Take 1B28 09:45 Nottingham to St Pancras as far as Leicester.

Difficulty: Easy | Duration: 30 minutes

Requirements:

Just Trains

- Class 222 Advanced 2019

Steam

- Network SouthEast Class 159 DMU Add-On
- BR Class 170 'Turbostar' DMU Add-On

Armstrong Powerhouse

- Class 158/159 (Cummins) Enhancement Pack
- Class 43 (VP185)/Mk3 Enhancement Pack
- Class 168/170/171 Enhancement Pack
- Class 156 Diesel Multiple Unit Pack

[DNL] The Chaddesden Tripper

Prepare 37710 at Toton Depot and then work 6T18 Toton to Chaddesden departmental trip in 2002.

Difficulty: Hard | Duration: 60 minutes

Requirements:

Just Trains

- YGB Seacow PlusPak Advanced
- Class 60 Advanced & Freight Wagons

Steam

- Settle to Carlisle Route Add-On
- EWS & Freightliner Class 08s Loco Add-On
- EWS Class 66 v2.0 Loco Add-On
- West Coast Main Line Over Shap Route Add-On
- BR Sectors Class 56 Loco Add-On
- Network SouthEast Class 159 DMU Add-On
- BR Class 170 'Turbostar' DMU Add-On

Armstrong Powerhouse

- Class 37 Locomotive Pack Vol.1
- MGR Wagon Pack
- Class 66 Enhancement Pack
- Class 56 Enhancement Pack
- Class 43 (VP185)/Mk3 Enhancement Pack
- Class 156 Diesel Multiple Unit Pack
- Class 158/159 (Cummins) Enhancement Pack
- Class 168/170/171 Enhancement Pack

[DNL] 5B41 Derby-Nottingham / 1D21 Nottingham-St Pancras

Drive a Class 222 on 5B41 Derby-Nottingham before working 1D21 through to Leicester in July 2019.

Difficulty: Medium | Duration: 75 minutes

Requirements:

Just Trains

- Class 222 Advanced 2019
- Voyager Advanced 2019

Steam

- BR Class 170 'Turbostar' DMU Add-On
- Network SouthEast Class 159 DMU Add-On
- EWS Class 66 v2.0 Loco Add-On

Armstrong Powerhouse

- Class 43 (MTU)/Mk3 Enhancement Pack
- Class 168/170/171 Enhancement Pack
- Class 156 Diesel Multiple Unit Pack

- Class 43 (VP185)/Mk3 Enhancement Pack
- Class 158/159 (Cummins Enhancement Pack)
- Class 66 Enhancement Pack

[DNL] 1C67 17:00 Sheffield-St Pancras

Drive a Class 222 from Derby to Leicester whilst working 1C67 17:00 Sheffield to London St Pancras in June 2019.

Difficulty: Easy | Duration: 30 minutes

Requirements:

Just Trains

- Class 222 Advanced 2019

Steam

- BR Class 170 'Turbostar' DMU Add-On
- EWS Class 66 v2.0 Loco Add-On
- Freightliner Class 70 Loco Add-On

Armstrong Powerhouse

- Class 66 Enhancement Pack
- Class 156 Diesel Multiple Unit Pack
- Class 168/170/171 Enhancement Pack
- JPA Wagon Pack
- Class 43 (VP185)/Mk3 Enhancement Pack

[DNL] (2007): 6E90 10:34 Mountsorrel-Doncaster

Drive 66708 on a loaded ballast working from Mountsorrel to Doncaster as far as Nottingham in the summer of 2007.

Difficulty: Medium | Duration: 45 minutes

Requirements:

Just Trains

- Class 222 Advanced 2019

Steam

- EWS Class 66 v2.0 Loco Add-On
- BR Class 170 'Turbostar' DMU Add-On
- Settle to Carlisle Route Add-On

Armstrong Powerhouse

- Class 156 Diesel Multiple Unit Pack
- Class 66 Enhancement Pack
- JNA-C Wagon Pack
- Class 168/170/171 Enhancement Pack
- Class 43 (VP185)/Mk3 Enhancement Pack

[DNL] 1M84 18:45 Cardiff-Nottingham / 5M84 Nottingham-Leicester

Drive a CrossCountry Class 170 from Derby to Nottingham before taking the empty train to Leicester, arriving there at 23:00.

Difficulty: Hard | Duration: 80 minutes

Requirements:

Just Trains

- Class 222 Advanced 2019

Steam

- Network SouthEast Class 159 DMU Add-On
- BR Class 170 'Turbostar' DMU Add-On
- EWS Class 66 v2.0 Loco Add-On

Armstrong Powerhouse

- Class 43 (MTU)/Mk3 Enhancement Pack
- Class 158 (Perkins) Enhancement Pack
- Class 168/170/171 Enhancement Pack
- Class 156 Diesel Multiple Unit Pack
- Class 43 (VP185)/Mk3 Enhancement Pack
- JNA-C Wagon Pack
- Class 66 Enhancement Pack

[DNL] The New Measurement Train

Drive the New Measurement Train (HST) from Leicester to Derby Etches Park in 2007.

Difficulty: Medium | Duration: 50 minutes

Requirements:

Just Trains

- Class 60 Advanced & Freight Wagons
- Class 222 Advanced 2019

Steam

- EWS Class 66 v2.0 Loco Add-On
- BR Class 170 'Turbostar' DMU Add-On

Armstrong Powerhouse

- Class 43 (Valenta)/Mk3 Enhancement Pack
- Class 43 (VP185)/Mk3 Enhancement Pack
- Class 66 Enhancement Pack
- HIA Wagon Pack
- Class 156 Diesel Multiple Unit Pack
- BAA/BZA Wagon Pack
- Class 168/170/171 Enhancement Pack

[DNL] 1V09 12:07 Nottingham-Cardiff

Drive a Class 170 from Nottingham to Derby whilst working 1V09 to Cardiff in May 2019.

Difficulty: Medium | Duration: 30 minutes

Requirements:

Just Trains

- Class 222 Advanced 2019

Steam

- BR Class 170 'Turbostar' DMU Add-On
- Network SouthEast Class 159 DMU Add-On

Armstrong Powerhouse

- Class 168/170/171 Enhancement Pack
- Class 158/159 (Cummins) Enhancement Pack
- Class 43 (VP185)/Mk3 Enhancement Pack
- Class 156 Diesel Multiple Unit Pack

[DNL] 6M04 06:45 Humber International Coal Terminal-Ratcliffe PS

Drive 66165 from Nottingham to Ratcliffe power station before working through to Toton with the empty wagons in February 2018.

Difficulty: Hard | Duration: 70 minutes

Requirements:

Just Trains

- Class 153 DMU Advanced
- Class 222 Advanced 2019

Steam

- Settle to Carlisle Route Add-On
- EWS Class 66 v2.0 Loco Add-On
- Network SouthEast Class 159 DMU Add-On
- BR Class 170 'Turbostar' DMU Add-On

Armstrong Powerhouse

- Class 66 Enhancement Pack
- Class 156 Diesel Multiple Unit Pack
- Class 158 (Perkins) Enhancement Pack
- Class 43 (VP185)/Mk3 Enhancement Pack
- Class 168/170/171 Enhancement Pack

[DNL] 2A95 17:52 Derby-Nottingham

Drive 158856 from Derby to Nottingham on a stopping service in April 2018.

Difficulty: Easy | Duration: 35 minutes

Requirements:

Just Trains

- Voyager Advanced 2019
- Class 222 Advanced 2019

Steam

- BR Class 170 'Turbostar' DMU Add-On
- Network South East Class 159 DMU Add-On

Armstrong Powerhouse

- Class 156 Diesel Multiple Unit Pack
- Class 158 (Perkins) Enhancement Pack
- Class 168/170/171 Enhancement Pack

[DNL] The Robin Hood

Drive 46115 'Scots Guardsman' from Syston Junction to Nottingham with the 'Robin Hood Railtour'.

Difficulty: Medium | Duration: 45 minutes

Requirements:

Just Trains

- Class 222 Advanced 2019

Steam

- BR Class 170 'Turbostar' DMU Add-On

Armstrong Powerhouse

- Mk1 Coach Pack Vol.1
- Class 156 Diesel Multiple Unit Pack
- Class 43 (VP185)/Mk3 Enhancement Pack
- Class 168/170/171 Enhancement Pack

Bossman Games

- LMS 6P Rebuilt Royal Scot Class

Standard scenarios using default Train Simulator stock

No additional payware stock is needed for these scenarios to operate correctly.

These scenarios will work with BOTH editions of the Derby-Nottingham-Leicester route:

- Midland Main Line: Derby-Nottingham-Leicester Extension
- Derby-Nottingham-Leicester

[Default] [DNL] 1F62 St Pancras-Derby

Drive a Class 47 on 1F62 17:20 St Pancras to Derby in 1995. You will be in control from Leicester.

Difficulty: Easy | Duration: 35 minutes

[Default] [DNL] 1D07 07:04 St Pancras-Nottingham

Drive an HST from Leicester to Nottingham on a hazy morning.

Difficulty: Easy | Duration: 30 minutes

[Default] [DNL] 2L77 16:30 Leicester-Lincoln

Drive from Leicester to Nottingham on a wet evening in February 2019.

Difficulty: Medium | Duration: 60 minutes

[Default] [DNL] 5L10 Leicester-Loughborough / 2L10 Loughborough-Leicester

Drive 156473 on an empty coaching stock move to from Leicester to Loughborough, then return to Leicester with the 06:59 stopping service.

Difficulty: Medium | Duration: 60 minutes

[Default] [DNL] 6D31 Radlett-Toton North Yard

Drive 6D31 Radlett-Toton North Yard from Leicester.

Difficulty: Medium | Duration: 65 minutes

[Default] [DNL] 1B28 09:45 Nottingham – 11:24 St Pancras International

Take 1B28 09:45 Nottingham to St Pancras as far as Leicester.

Difficulty: Easy | Duration: 30 minutes

[Default] [DNL] 5B41 Derby-Nottingham / 1B41 Nottingham-St Pancras

Drive 5B41 Derby-Nottingham before working 1B41 through to Leicester in July 2019.

Difficulty: Medium | Duration: 75 minutes

[Default] [DNL] 1C67 17:00 Sheffield-St Pancras

Drive from Derby to Leicester whilst working 1C67 17:00 Sheffield to London St Pancras in June 2019.

Difficulty: Easy | Duration: 30 minutes

[Default] [DNL] 1M84 18:45 Cardiff-Nottingham / 5M84 Nottingham-Leicester

Drive 1M84 from Derby to Nottingham before taking the empty train to Leicester, arriving there at 23:00.

Difficulty: Hard | Duration: 80 minutes

[Default] [DNL] 1V09 12:07 Nottingham-Cardiff

Drive from Nottingham to Derby whilst working 1V09 to Cardiff.

Difficulty: Medium | Duration: 30 minutes

[Default] [DNL] 6M04 06:45 Humber International Coal Terminal-Ratcliffe PS

Drive a Class 66 from Nottingham to Ratcliffe power station, before working through to Toton with the empty wagons.

Difficulty: Hard | Duration: 70 minutes

[Default] [DNL] 2A95 17:52 Derby-Nottingham

Drive a stopping service from Derby to Nottingham.

Difficulty: Easy | Duration: 35 minutes

[Default] [DNL] The Robin Hood

Drive 44871 from Syston Junction to Nottingham with the 'Robin Hood Railtour'.

Difficulty: Medium | Duration: 45 minutes

Standard scenarios requiring additional payware stock – for the Extension version ONLY

These scenarios will only work with the Extension version of Derby-Nottingham Leicester:

- Midland Main Line: Derby-Nottingham-Leicester Extension

[DV] [DNL] (2004) 06:39 Matlock to St Pancras

Drive a Class 170 from Matlock to Leicester whilst working an early morning service to London.

Difficulty: Medium | Duration: 75 minutes

Requirements:

Just Trains

- Midland Main Line: Sheffield-Derby
- Midland Main Line: Derwent Valley Line
- Voyager Advanced 2019

Steam

- BR Class 170 'Turbostar' DMU Add-On
- Network SouthEast Class 159 DMU Add-On

Armstrong Powerhouse

- Class 168/170/171 Enhancement Pack
- Class 156 Diesel Multiple Unit Pack
- Class 158/159 (Cummins) Enhancement Pack
- Class 43 (VP185)/Mk3 Enhancement Pack

[DNL] [SD] 1C22 07:46 Sheffield-St Pancras

Drive an HST from Sheffield to St Pancras on a June morning in 2018.

Difficulty: Easy | Duration: 70 minutes

Requirements:

Just Trains

- Voyager Advanced 2019
- Class 222 Advanced 2019
- Class 153 DMU Advanced
- Midland Main Line: Sheffield-Derby

Steam

- Network SouthEast Class 159 DMU Add-On
- BR Class 170 'Turbostar' DMU Add-On

Armstrong Powerhouse

- Class 43 (VP185)/Mk3 Enhancement Pack
- Class 158 (Cummins) Enhancement Pack
- Class 156 Diesel Multiple Unit Pack

- Class 168/170/171 Enhancement Pack

[DNL] [SD] 1F38 13:31 St Pancras-Sheffield

Drive a Class 222 from Leicester to Sheffield.

Difficulty: Easy | Duration: 65 minutes

Requirements:

Just Trains

- Midland Main Line: Sheffield-Derby
- Voyager Advanced 2019
- Class 222 Advanced 2019

Steam

- Network SouthEast Class 159 DMU Add-On
- BR Class 170 'Turbostar' DMU Add-On
- Midland Main Line London-Bedford Route Add-On

Armstrong Powerhouse

- Class 150/2 Diesel Multiple Unit Pack
- Class 156 Diesel Multiple Unit Pack
- Class 158/159 (Cummins) Enhancement Pack
- Class 168/170/171 Enhancement Pack
- Class 43 (VP185)/Mk3 Enhancement Pack

[DNL] [SD] 1Y99 2003 Leeds-Nottingham

Drive a Northern Class 158 between Sheffield and Nottingham on 1Y99.

Difficulty: Medium | Duration: 70 minutes

Requirements:

Just Trains

- Midland Main Line: Sheffield-Derby
- Voyager Advanced 2019
- Class 222 Advanced 2019
- Class 60 Advanced & Freight Wagons

Steam

- Network SouthEast Class 159 DMU Add-On
- BR Class 170 'Turbostar' DMU Add-On

Armstrong Powerhouse

- Class 150/2 Diesel Multiple Unit Pack
- Class 156 Diesel Multiple Unit Pack
- Class 158/159 (Cummins) Enhancement Pack
- Class 168/170/171 Enhancement Pack
- Class 43 (MTU)/Mk3 Enhancement Pack
- Class 43 (VP185)/Mk3 Enhancement Pack

[DNL] [DV] 2A10 06:17 Nottingham-Matlock

Drive a Class 156 on 2A10 06:17 Nottingham to Matlock in July 2019.

Difficulty: Medium | Duration: 70 minutes

Requirements:

Just Trains

- Class 222 Advanced 2019
- Voyager Advanced 2019
- Midland Main Line: Sheffield-Derby
- Midland Main Line: Derwent Valley Line

Steam

- Network SouthEast Class 159 DMU Add-On
- BR Class 170 'Turbostar' DMU Add-On

Armstrong Powerhouse

- Class 156 Diesel Multiple Unit Pack
- Class 158 (Perkins) Enhancement Pack
- Class 43 (VP185)/Mk3 Enhancement Pack
- Class 168/170/171 Enhancement Pack
- Class 158 (Cummins) Enhancement Pack

Standard scenarios using default Train Simulator stock – for the Extension version ONLY

These scenarios will only work with the Extension version of Derby-Nottingham Leicester:

- **Midland Main Line: Derby-Nottingham-Leicester Extension**

[Default] [DNL] [SD] 1Y99 2003 Leeds-Nottingham

Drive a Northern Class 158 between Sheffield and Nottingham on 1Y99.

Difficulty: Medium | Duration: 70 minutes

[Default] [DNL] [SD] 1F38 13:31 St Pancras-Sheffield

Drive a service from Leicester to Sheffield.

Difficulty: Easy | Duration: 65 minutes

[Default] [DNL] [SD] 1C22 07:46 Sheffield-St Pancras

Drive an HST from Sheffield to St Pancras on a June morning.

Difficulty: Easy | Duration: 70 minutes

[Default] [DV] [DNL] 06:39 Matlock to St Pancras

This scenario requires the Just Trains Midland Main Line: Derwent Valley Line route.

Drive from Matlock to Leicester whilst working an early morning service to London.

Difficulty: Medium | Duration: 75 minutes

[Default] [DNL] [DV] 2A10 06:17 Nottingham-Matlock

This scenario requires the Just Trains Midland Main Line: Derwent Valley Line route.

Drive 2A10 06:17 Nottingham to Matlock.

Difficulty: Medium | Duration: 70 minutes

Free Roam scenarios

Click a train and take it for a drive!

Derby Free Roam

Toton Free Roam

Nottingham Free Roam

Leicester Free Roam

Note: As these are Free Roam scenarios you must remember to ensure that the route has been set correctly to avoid being directed into sidings or derailed on junctions set against the train.

QUICK DRIVE

This route is equipped for use with the Quick Drive option in Train Simulator.

To access this option from the Main Menu, press the 'Drive' button and then the 'Quick Drive' tab at the top left.

The Quick Drive menu

The top left area on the menu is where you select the train you wish to drive.

When you click on the menu directly to the right of the train picture, it shows the variations/consists available for the selected train in the right-side area of the menu. Click on the consist that you want to drive.

Changing your train

If you want to drive a different train, click back on the top left train picture. The right side of the menu will change and will display all the trains you have installed in Train Simulator.

Use the 'Page' button located at the top middle of the pictures to scroll through them all.

All installed trains which have Quick Drive enabled are displayed. If the train does NOT have Quick Drive enabled, it will NOT be displayed in the Quick Drive menu.

Selecting your route

When you have selected the train and consist you wish to drive, you then need to select the route.

In the middle left area are the route selection menus. Click on the middle far left route picture. This will change the right-side area of the menu to display the routes that you have installed in Train Simulator.

Choosing departure and arrival stations

Click on the route 'map' image directly to the right of the route picture. This will then show the available departure and arrival points for the route. You can select them by clicking on the ones you want.

Changing the time and weather

Controls for changing the time of day and weather conditions are on the lower left area. You can use these to adjust the time and weather settings as you wish.

Driving

When you have made all your selections, press the 'Drive' button on the lower right side of the menu and Train Simulator will load your settings.

IMPORTANT – Filters

In the Standard and Free Roam 'Drive' menus there are various locomotive and route filter options along the top of the right side. We strongly recommend that these are all set to 'None' unless you are experienced in using them.

If you set a filter and forget to remove it, there is a strong possibility that not all the available locomotives and/or routes will be displayed in the menu.

CREDITS

Route developers

Mark Walker and Thomas Harrison

Custom objects

Gü Studios – track models

Alexander Penfold, Nitin Singh, William Stead, Tom Williams

Scenarios

Ash Clark, Thomas Harrison, Mark Walker

Quick Drive scenarios

Max Mortimer

Just Trains

Project Management	Alex Ford
Installer	Martin Wright
Artwork	Fink Creative
Manual	Alex Ford
Technical Support	Craig Haskell
Customer Service	Simon King

Special thanks to Paul Taylor, Matthew Wilson and EMR driver Kerry Hewitt

Special thanks also to all the testers

COPYRIGHT

©2020 Just Trains. All rights reserved. Just Trains and the Just Trains logo are trademarks of JustFlight London Limited, St. George's House, George Street, Huntingdon, PE29 3GH, UK. All trademarks and brand names are trademarks or registered trademarks of the respective owners and their use herein does not imply any association or endorsement by any third party.

Note: One or more textures on some of the 3D models in this product have been created with images from Textures.com. These images may not be redistributed. Please visit [Textures.com](https://www.textures.com) for more information.

More Train Simulator add-ons from Just Trains



Western Mainlines



Voyager Advanced 2019



Cornish Main Line



London-Aylesbury



South Devon Main Line



Paignton Extension



South Western Expressways



***Western Mainlines:
The Extension Collection***

