



MIDLAND MAIN LINE

HOPE VALLEY



ROUTE GUIDE

Just Trains

Just Trains Midland Main Line route and add-ons



Midland Main Line: Sheffield-Derby



Nottingham-Lincoln Extension



FREE Scenario Pack



Barrow Hill Roundhouse Extension



Derby-Nottingham-Leicester Extension



Erewash Valley



Derwent Valley Line

MIDLAND MAIN LINE

HOPE VALLEY

Route Guide

Route expansion for Train Simulator

CONTENTS

DEDICATION	4
INTRODUCTION	5
Train Simulator requirements.....	5
Scenery quality and display settings.....	5
Run in 64-bit mode!.....	5
INSTALLATION, UPDATES AND SUPPORT	7
STATIONS	8
FEATURES TO LOOK OUT FOR ON THE ROUTE	22
Driving from Dore and Topley to Manchester Piccadilly via New Mills.....	22
Driving south from Ardwick Junction to Stockport and branching off towards New Mills	44
SCENARIOS	55
Standard scenarios requiring additional payware add-ons	57
Standard scenarios using default Train Simulator stock.....	64
Free Roam scenario	65
QUICK DRIVE	66
CREDITS	68
COPYRIGHT	68

DEDICATION

Paul Taylor

This Hope Valley add-on is dedicated to the memory of Paul Taylor.

Paul was a great friend to Just Trains over the past seven years and we will always remember his patience, dedication and kindness. His expert knowledge has contributed enormously to the development of many of our products, for which we are very grateful.

Thank you for everything, Paul. Rest in peace.



INTRODUCTION

This Hope Valley route runs from Manchester in the west to Sheffield in the east and is over 55 miles in length. The route is Quick Drive enabled and includes 27 detailed stations along with numerous new custom assets along the length of the route.

Twelve scenarios which require additional payware add-ons are included as well as ten scenarios which only require default Train Simulator stock. See the [SCENARIOS](#) section for all the details.

Train Simulator requirements

If you purchased Train Simulator after 20 September 2012 you will require the European Loco & Asset Pack (available to purchase via [Steam](#)) for this route to display correctly and for some scenarios to work.

Some of the scenarios supplied with this Hope Valley route require add-ons which are not supplied with this software; see the [SCENARIOS](#) section for full details.

Scenery quality and display settings

Various effects and techniques have been used to enhance the realism of this route, including TSX technology for realistic night lighting effects.

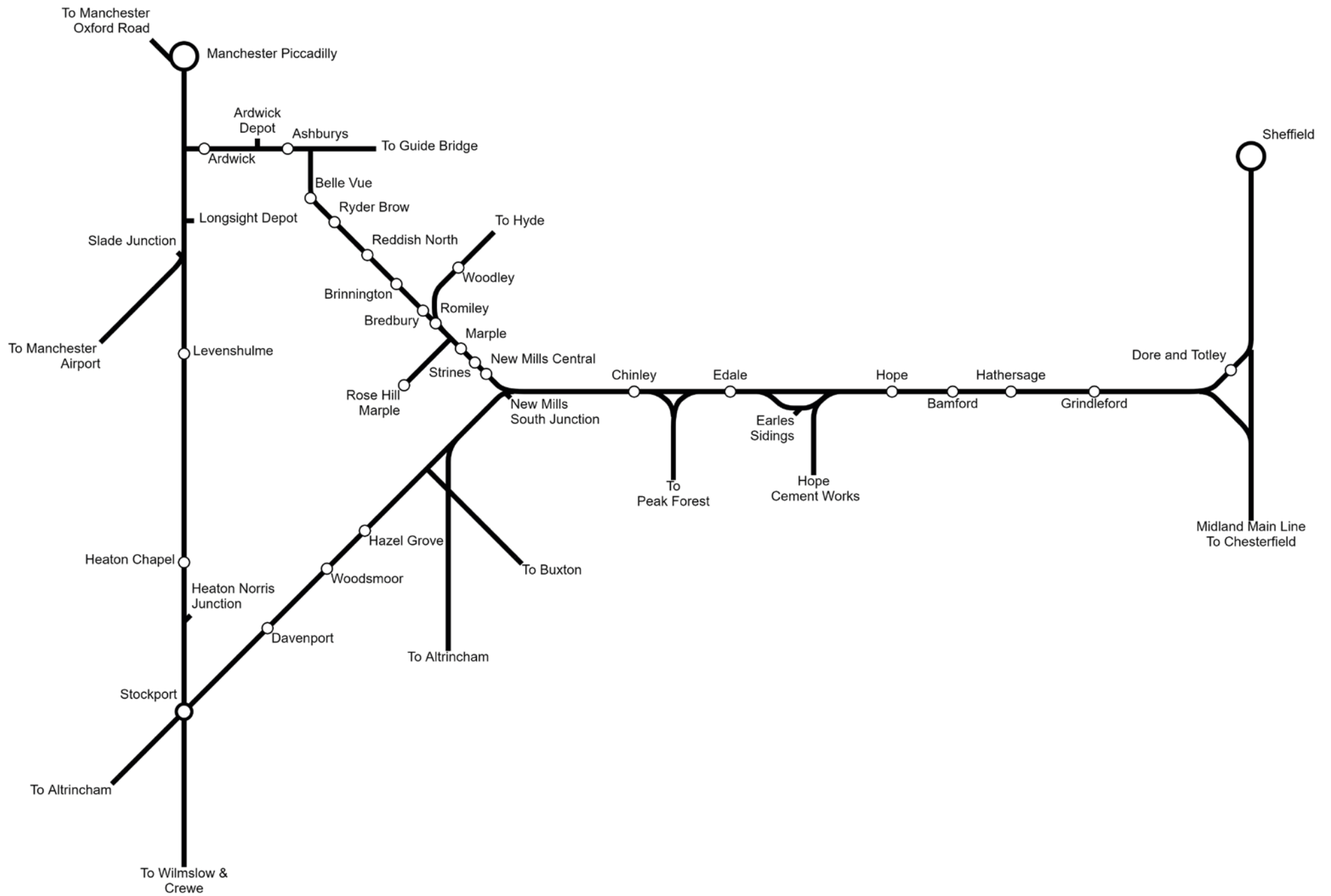
We recommend running the route with 'Procedural Flora' turned off via Settings > Graphics > Advanced > Next and then Save.

Due to the high level of detail which has been modelled, it is best to run the route at the highest settings your PC can manage. Settings can all be accessed via the Settings > Graphics menu in Train Simulator. The route will still run at lower settings, of course, but some of the assets may not be displayed as intended.

Run in 64-bit mode!

We strongly advise you to run Train Simulator in 64-bit mode to enhance its stability:

1. Run the Steam client and select 'Games' from the top menu.
2. Select 'Train Simulator' from the left-side menu and press the blue 'PLAY' button in the top centre of the window. The option to 'Play Train Simulator' or 'Play Train Simulator 64-bit Edition' will pop up.
3. Select the 64-bit option and press 'Play'.



INSTALLATION, UPDATES AND SUPPORT

You can install this add-on as often as you like on the same computer system. To re-download the Hope Valley software:

1. Click on the 'Account' tab on the [Just Trains](#) website.
2. Log in to your account.
3. Click on the 'Your Orders' button.
4. A list of your purchases will appear and you can then re-download the software you require.

Uninstalling

To uninstall this product from your system, select the appropriate option for your version of Windows from the Control Panel:

- 'Add or Remove Programs' (Windows XP)
- 'Programs and Features' (Windows Vista or 7)
- 'Apps & features' (Windows 10 or later)

Choose the product you want to uninstall and then select the 'Uninstall' option; follow the on-screen instructions to uninstall the software.

Uninstalling or deleting this software in any other way may cause problems when using this product in the future or with your Windows set-up.

Updates and Technical Support

For technical support (in English) please visit the [Support](#) pages on the Just Trains website.

As a Just Trains customer you can obtain free technical support for any Just Trains product.

If an update becomes available for this software, we will post details on the Support page and will also send a notification email about it to all buyers who have not unsubscribed from our emails.

Regular News

To get all the latest news about Just Trains products, special offers and projects in development, [subscribe](#) to our regular emails.

We can assure you that none of your details will ever be sold or passed on to any third party and you can, of course, unsubscribe from this service at any time.

You can also keep up to date with Just Trains via [Facebook](#) and [Twitter](#).

STATIONS

Dore and Totley



Opened 1872

Passengers 2020-2021: 29,118

Grindleford



Opened 1894

Passengers 2020-2021: 22,194

Hathersage



Opened 1894

Passengers 2020-2021: 22,144

Bamford



Opened 1894

Passengers 2020-2021: 20,208

Hope



Opened 1894

Passengers 2020-2021: 22,814

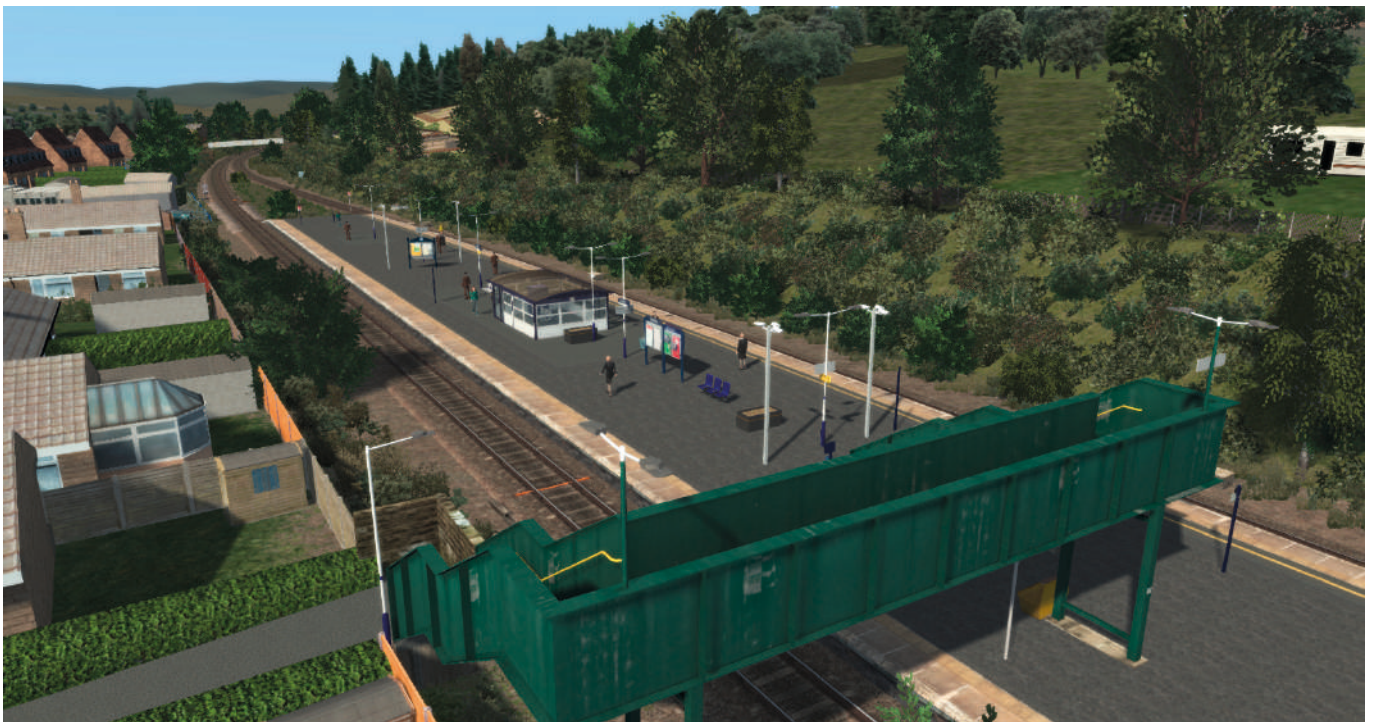
Edale



Opened 1894

Passengers 2020-2021: 45,800

Chinley



Opened 1867

Passengers 2020-2021: 21,856

New Mills Central



Opened 1865

Passengers 2020-2021: 42,654

Strines



Opened 1866

Passengers 2020-2021: 3,720

Marple



Opened 1865

Passengers 2020-2021: 83,382

Rose Hill Marple



Opened 1869

Passengers 2020-2021: 26,124

Romiley



Opened 1862

Passengers 2020-2021: 1,761

Woodley



Opened 1862

Passengers 2020-2021: 10,082

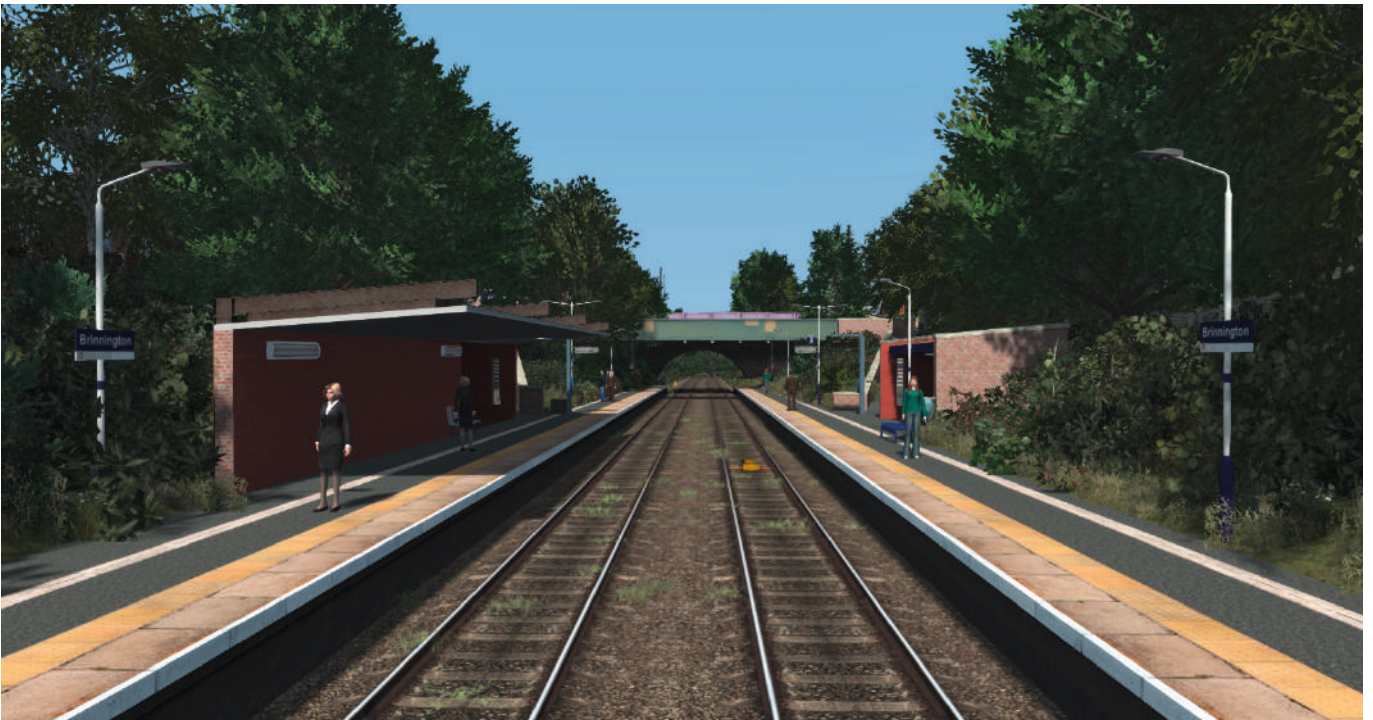
Bredbury



Opened 1875

Passengers 2020-2021: 48,242

Brinnington



Opened 1977

Passengers 2020-2021: 32,852

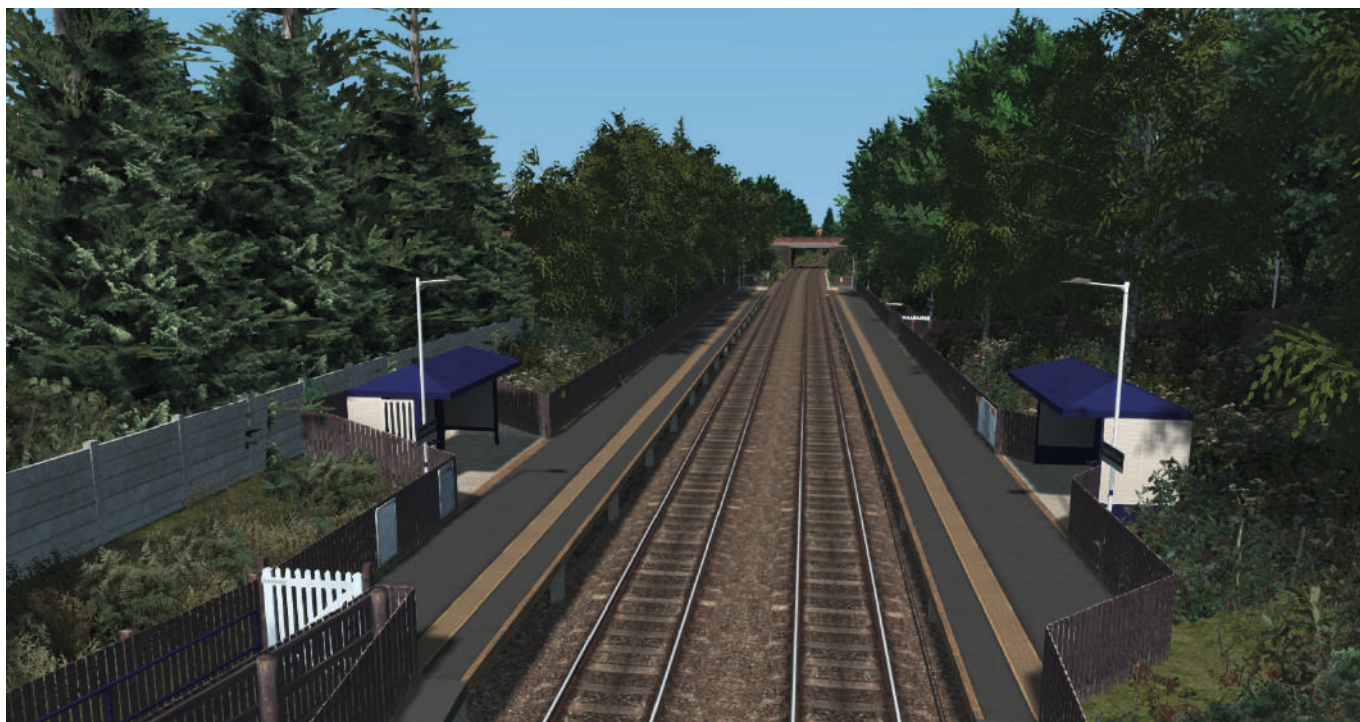
Reddish North



Opened 1875

Passengers 2020-2021: 55,858

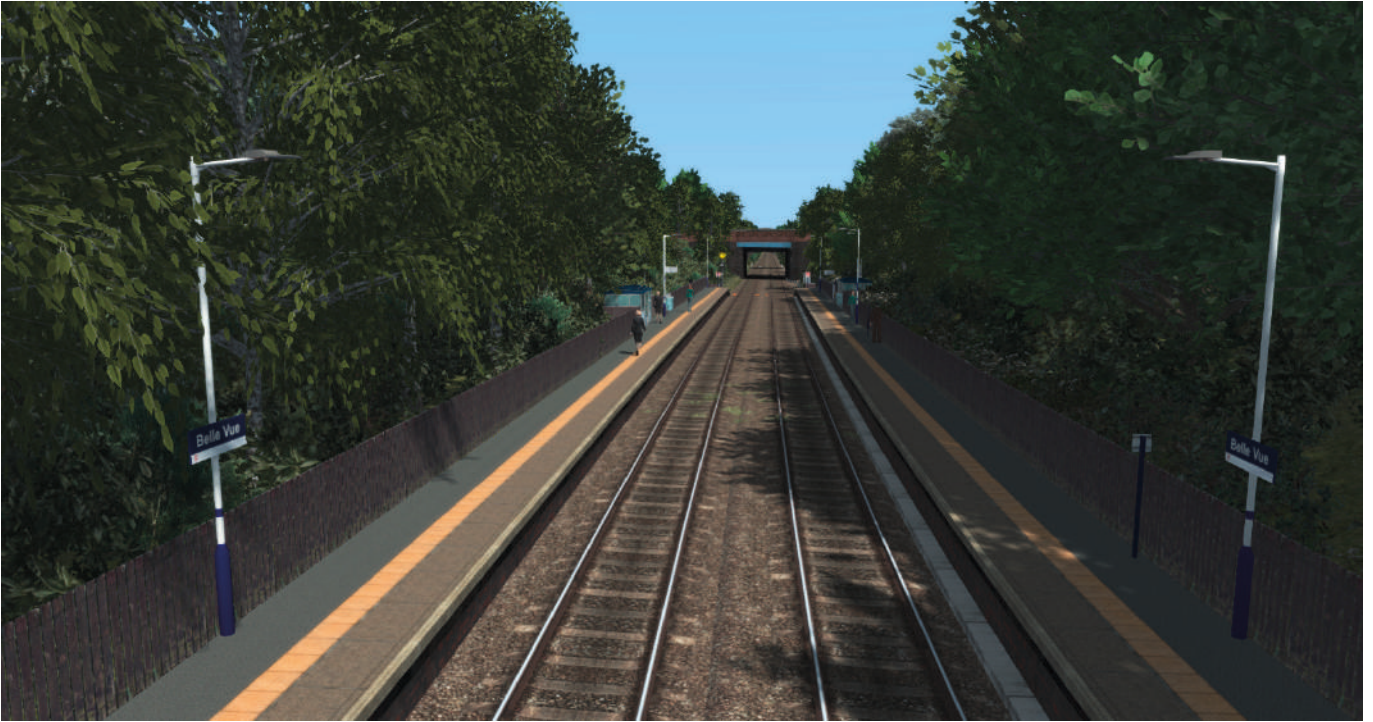
Ryder Brow



Opened 1985

Passengers 2020-2021: 7,638

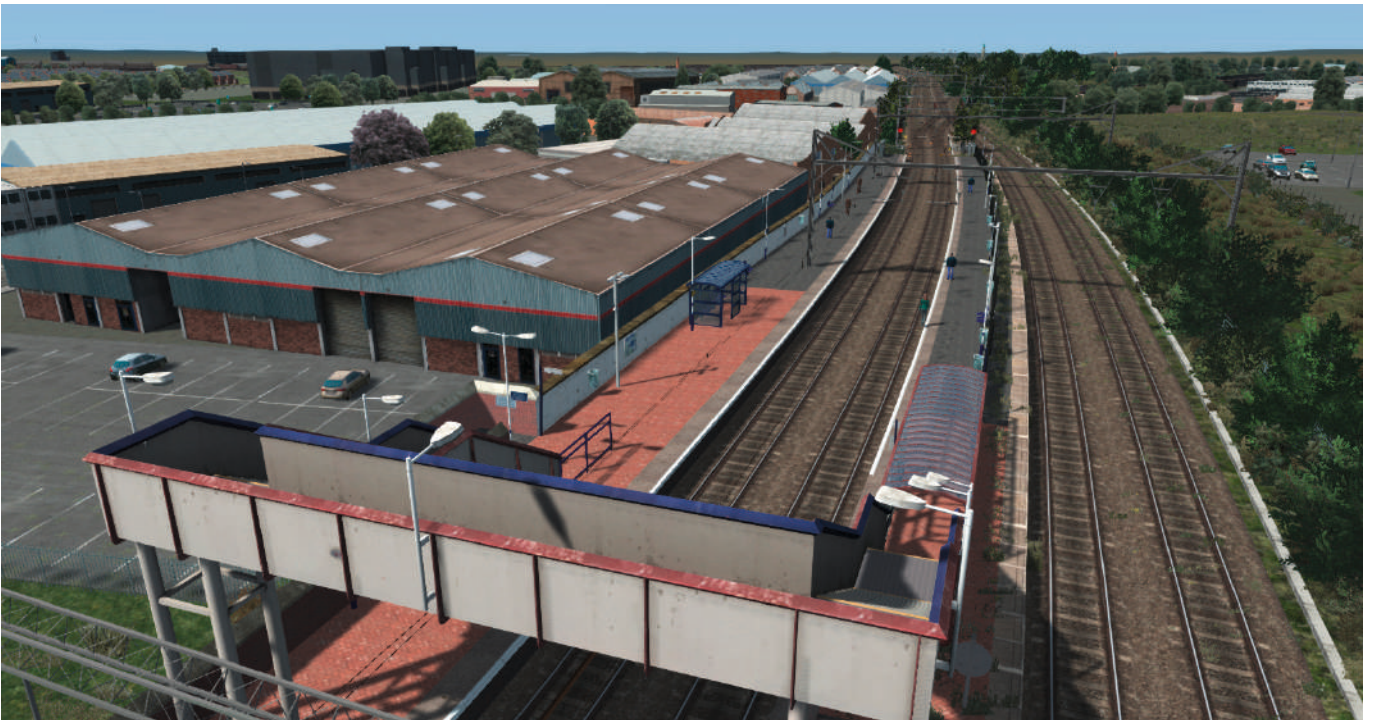
Belle Vue



Opened 1875

Passengers 2020-2021: 2,602

Ashburys



Opened 1855

Passengers 2020-2021: 35,190

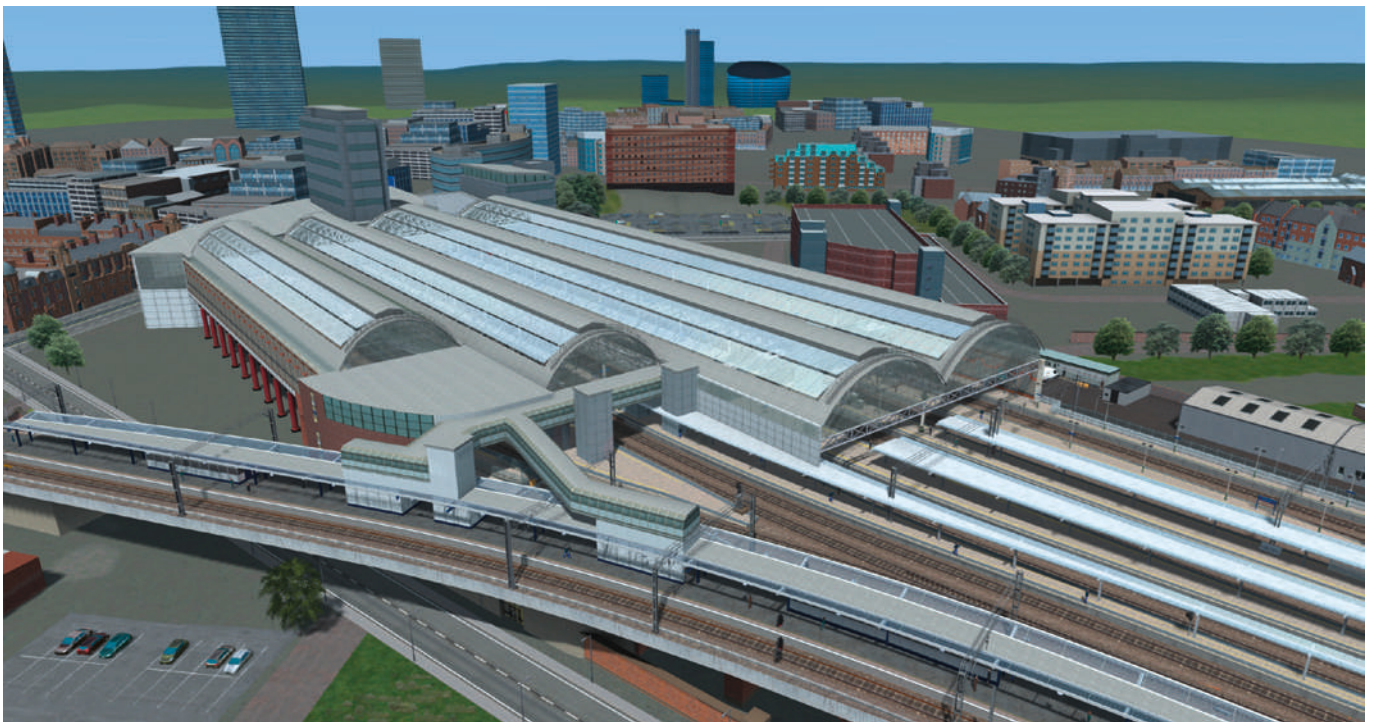
Ardwick



Opened 1842

Passengers 2020-2021: 238

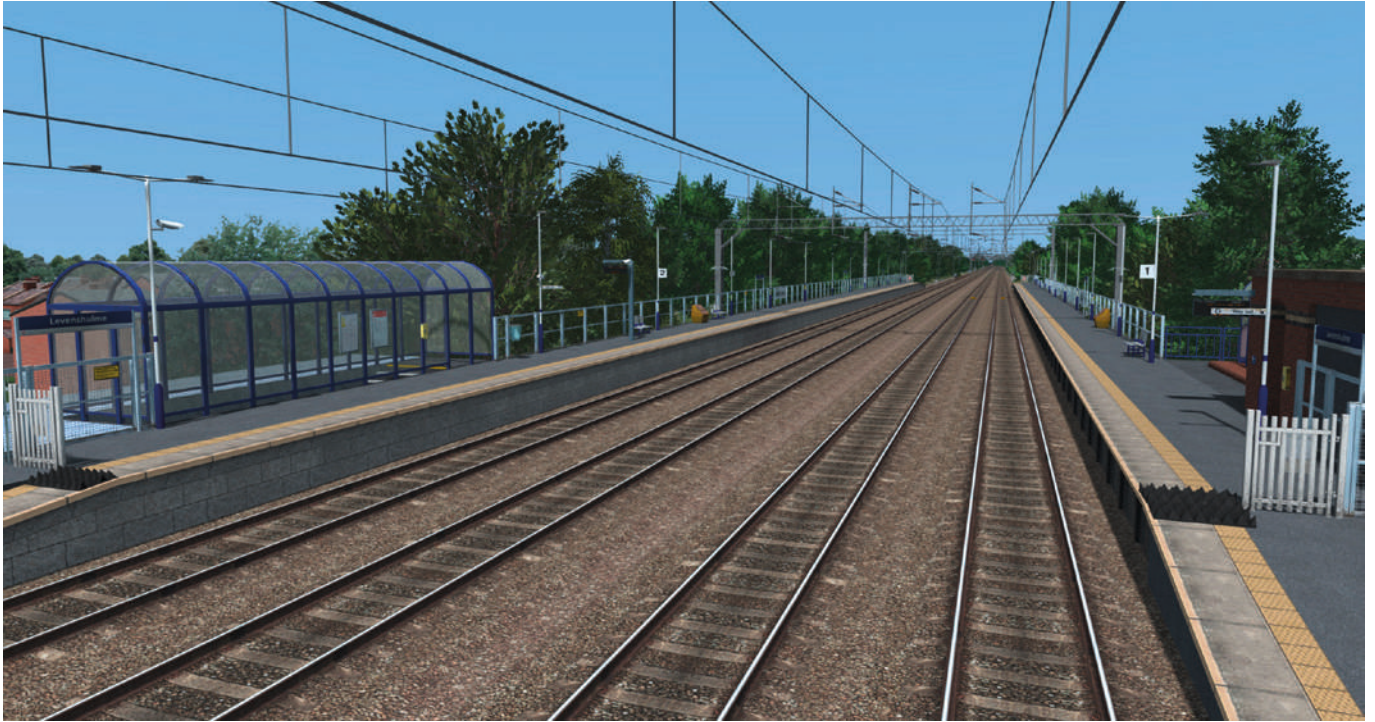
Manchester Piccadilly



Opened 1842

Passengers 2020-2021: 5.188 million

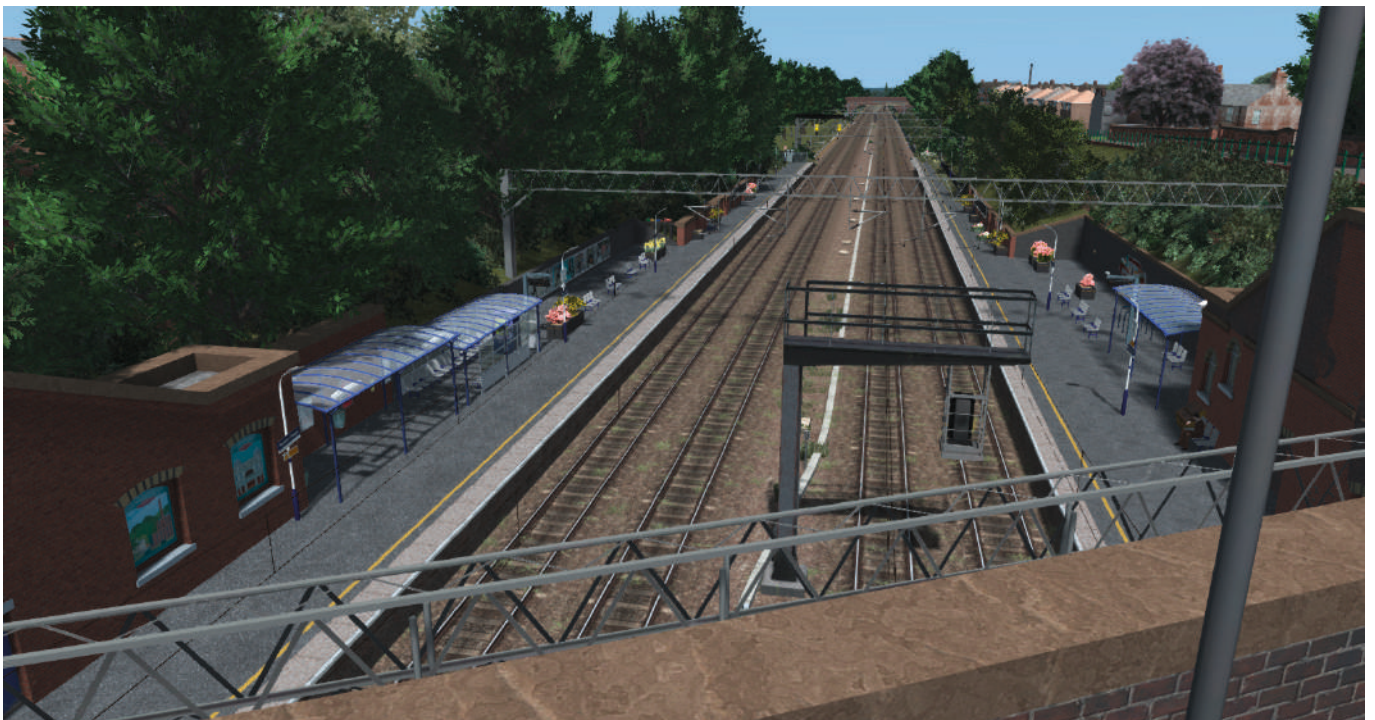
Levenshulme



Opened 1958

Passengers 2020-2021: 0.142 million

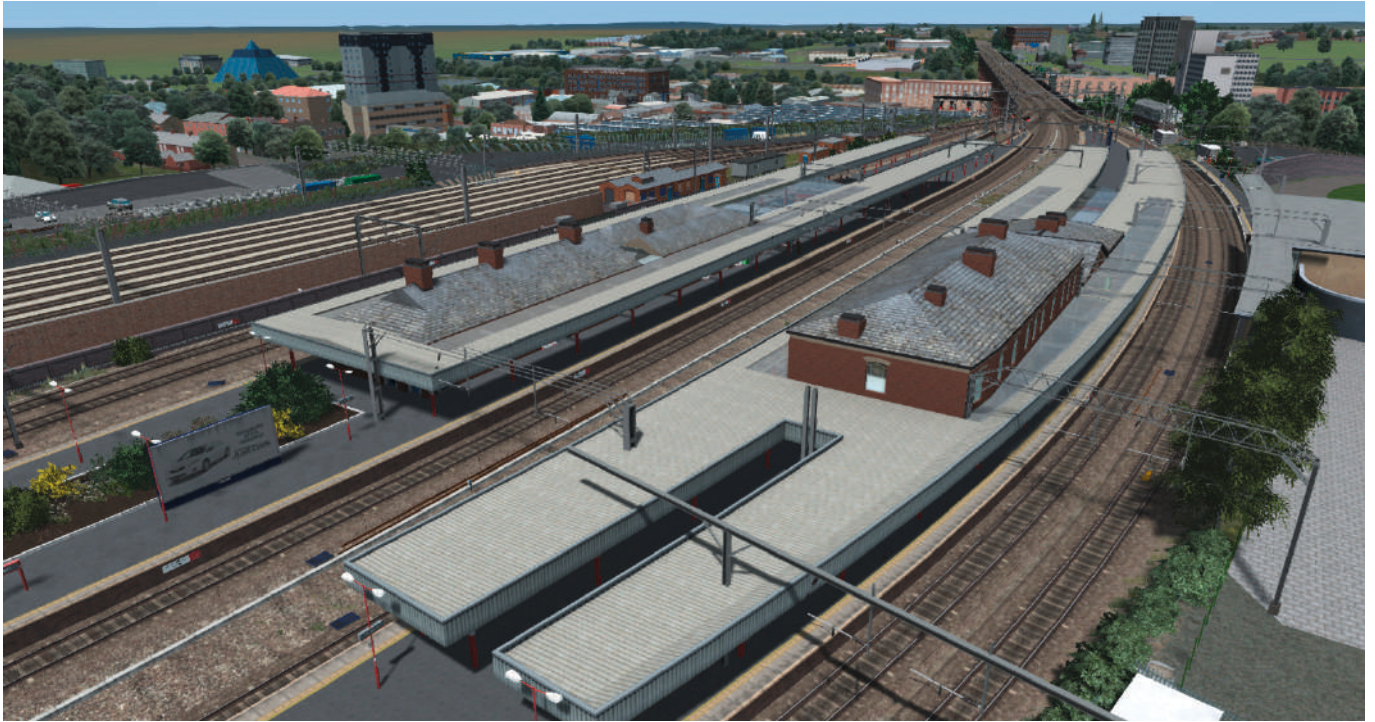
Heaton Chapel



Opened 1852

Passengers 2020-2021: 0.123 million

Stockport



Opened 1843

Passengers 2020-2021: 0.913 million

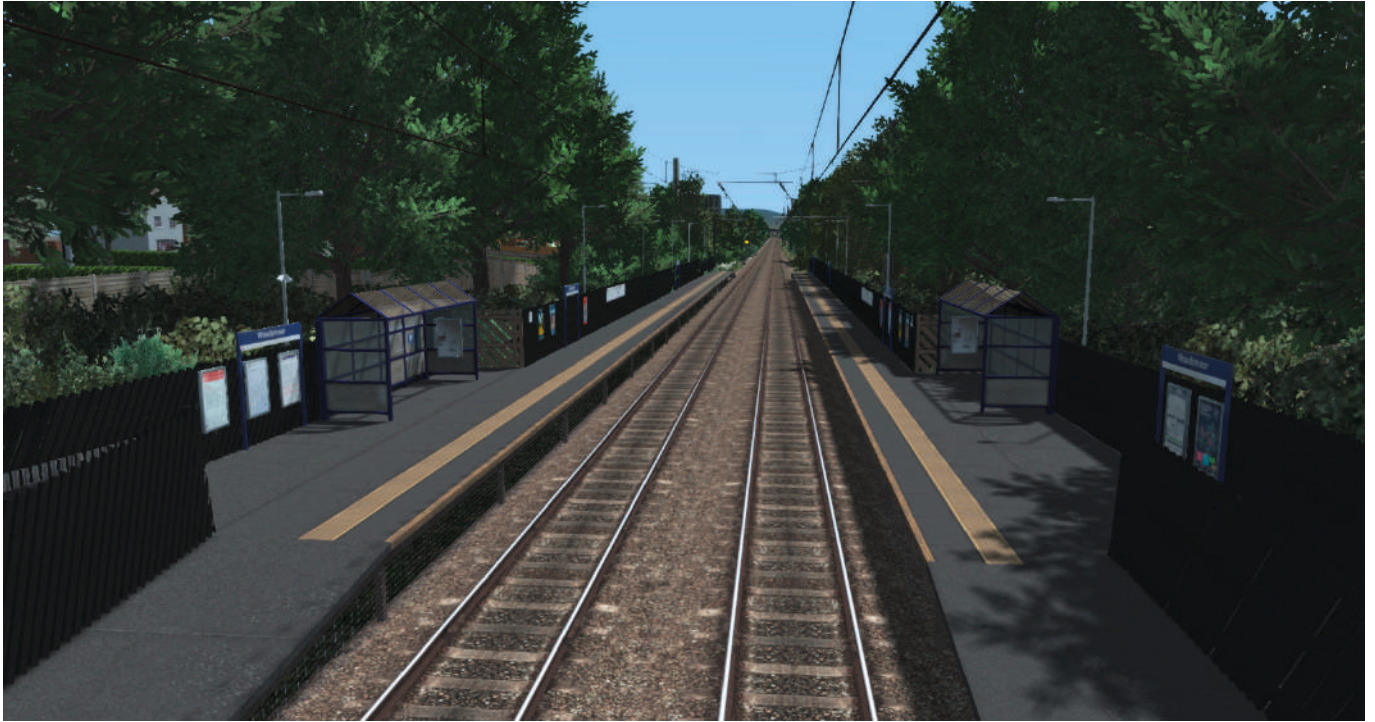
Davenport



Opened 1858

Passengers 2020-2021: 68,610

Woodsmoor



Opened 1990

Passengers 2020-2021: 64,220

Hazel Grove



Opened 1857

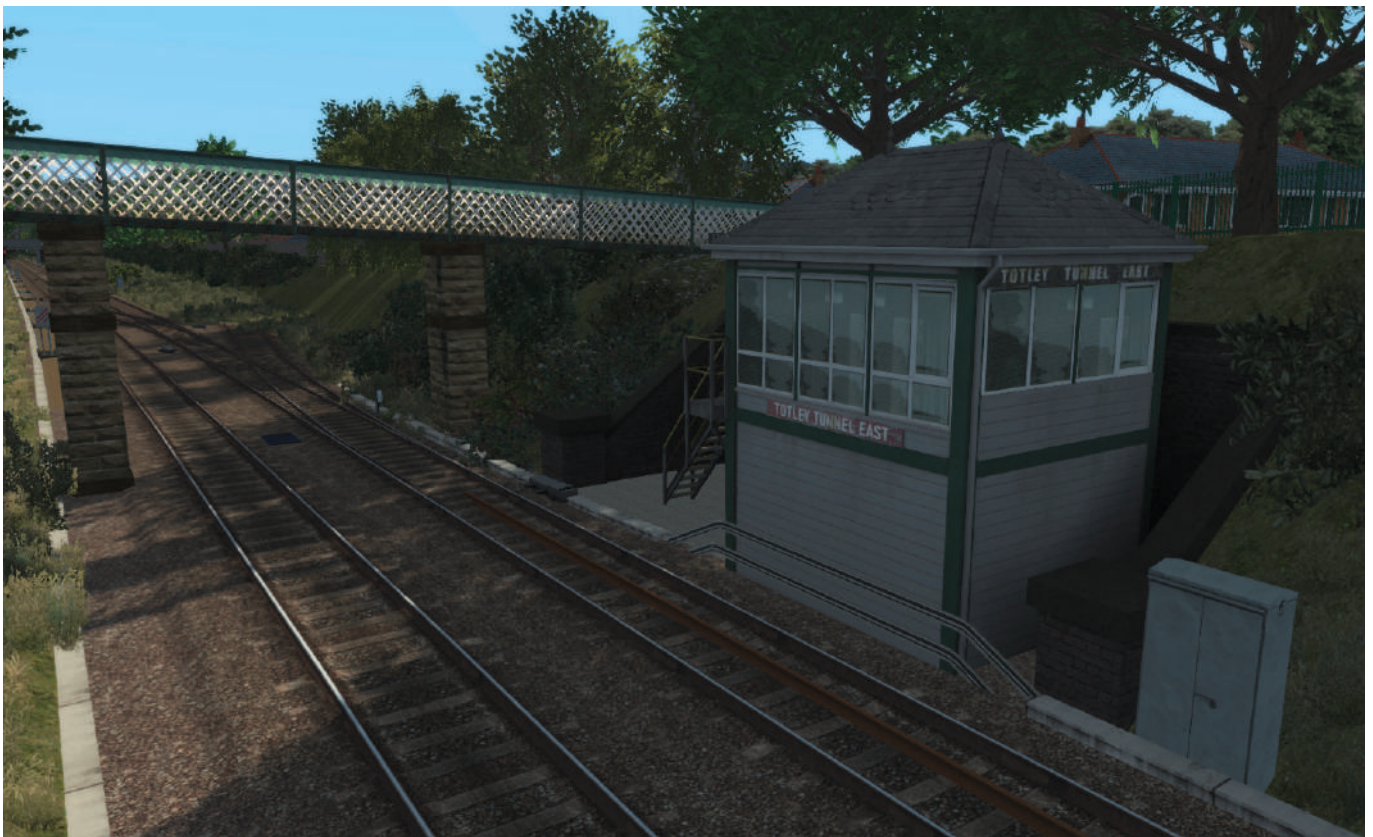
Passengers 2020-2021: 0.107 million

FEATURES TO LOOK OUT FOR ON THE ROUTE

Driving from Dore and Totley to Manchester Piccadilly via New Mills

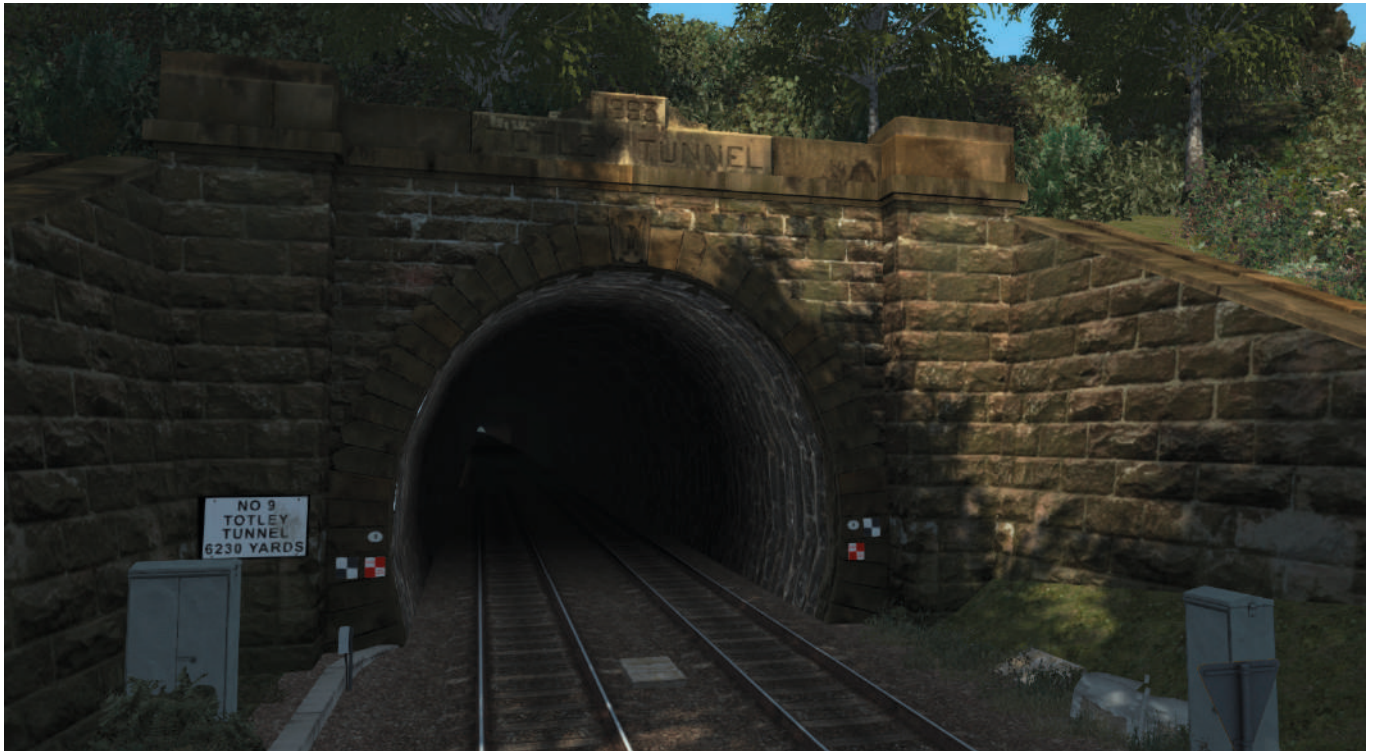
Landmark buildings and other features of interest have been modelled along the length of the route – these are some of them, in the order you would see them when driving the section of the route from Dore and Totley to Manchester Piccadilly via New Mills:

Totley Tunnel East signal box



This characterful box was built in 1893.

Totley Tunnel



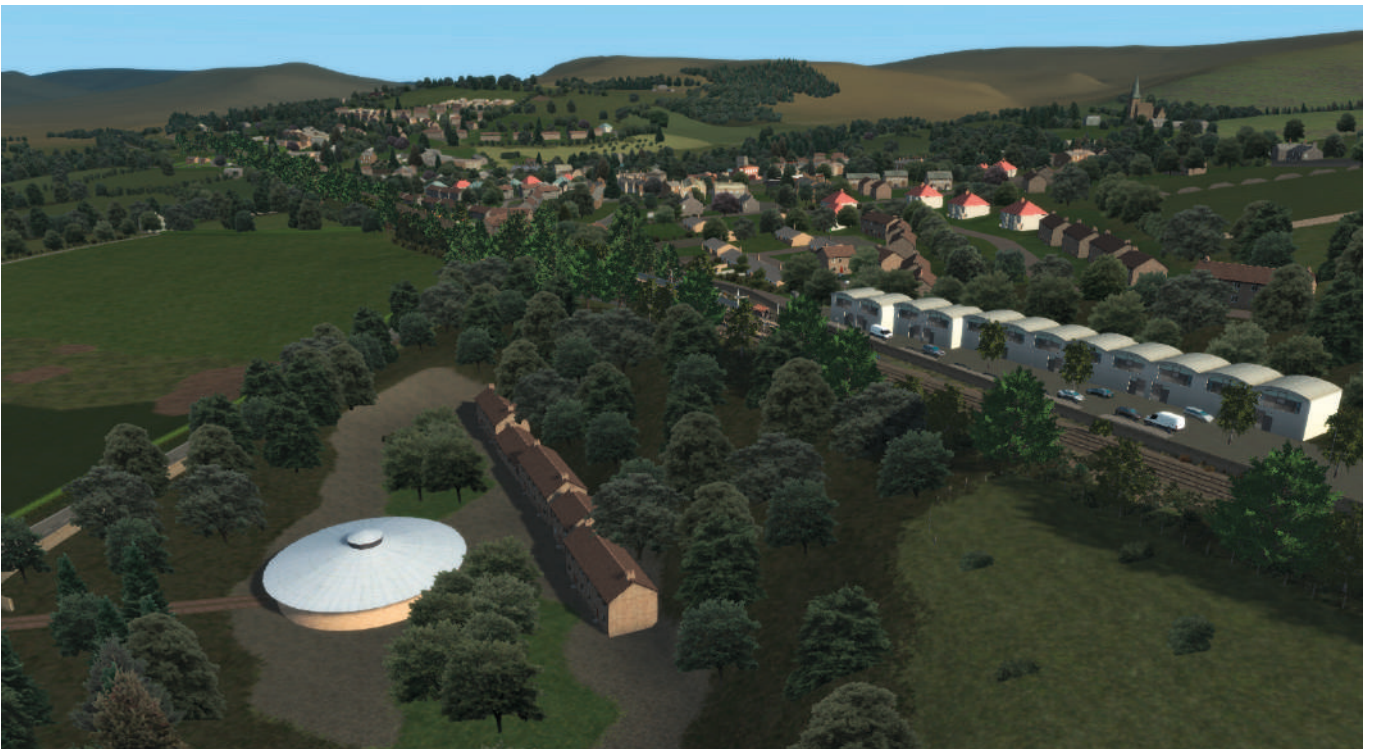
Totley Tunnel was opened in 1893. At 3.5 miles in length, it was the second-longest tunnel in the UK, after the Severn Tunnel. After High Speed 1 opened, it is now the fourth-longest tunnel.

Grindleford signal box



Built in 1938.

The Round Building, Hathersage



This unique building houses the David Mellor cutlery factory and design museum.

Hathersage Viaduct



This seven-arch viaduct was built in 1892 and is now a Grade II listed building.

Location of former Derwent branch line



The bridge to the right in this picture used to carry the former Derwent branch line under the road. The branch line was used to carry stone for the construction of the Derwent, Howden and Ladybower reservoirs. Today it forms part of the Thornhill Trail.

Hope Cement Works junction



The main line junction to the Hope Cement Works.

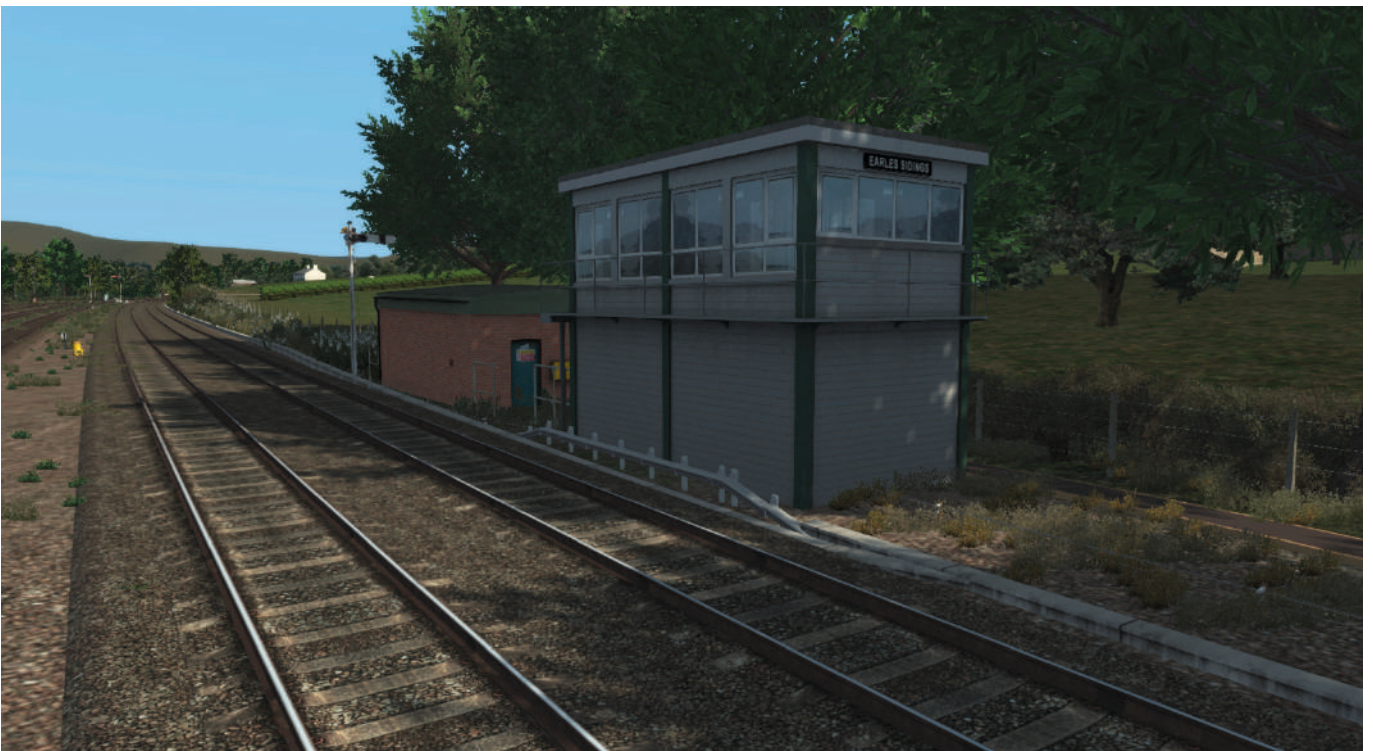
Hope Cement Works





The Hope Cement Works opened in 1929 and is served by a two-mile railway connecting to the Hope Valley at Earles Sidings. The plant produces 1,580,000 tonnes of cement annually – 15% of the UK's cement consumption.

Earles Sidings and signal box



Earles Sidings is named after G & T Earle Ltd, the original operators of the Hope Cement factory. Today it houses a Freightliner depot and cement is carried here by Class 20 locomotives from the cement works. The signal box was built in 1929 for the cement works branch.

Edale signal box



Built in 1893.

Cowburn Tunnel



Opened in 1893, the tunnel is 3,702 yards long. Cowburn Tunnel is the deepest railway tunnel in England, at 875 feet.

Chinley Triangle



This triangular junction with the Great Rocks line is used by freight trains heading towards Buxton.

Chinley signal box



This was built in 1980 to replace the Chinley North Junction signal box.

Buxworth station (closed)



The station opened in 1867 and closed in 1958. Today it is an outdoor education centre.

New Mills South Junction signal box



Built in 1903.

New Mills South Junction



The Hope Valley line splits at this junction, with the northern line going to Manchester via New Mills Central, and the southern line going via Hazel Grove.

New Mills Tunnel and former Hayfield branch line



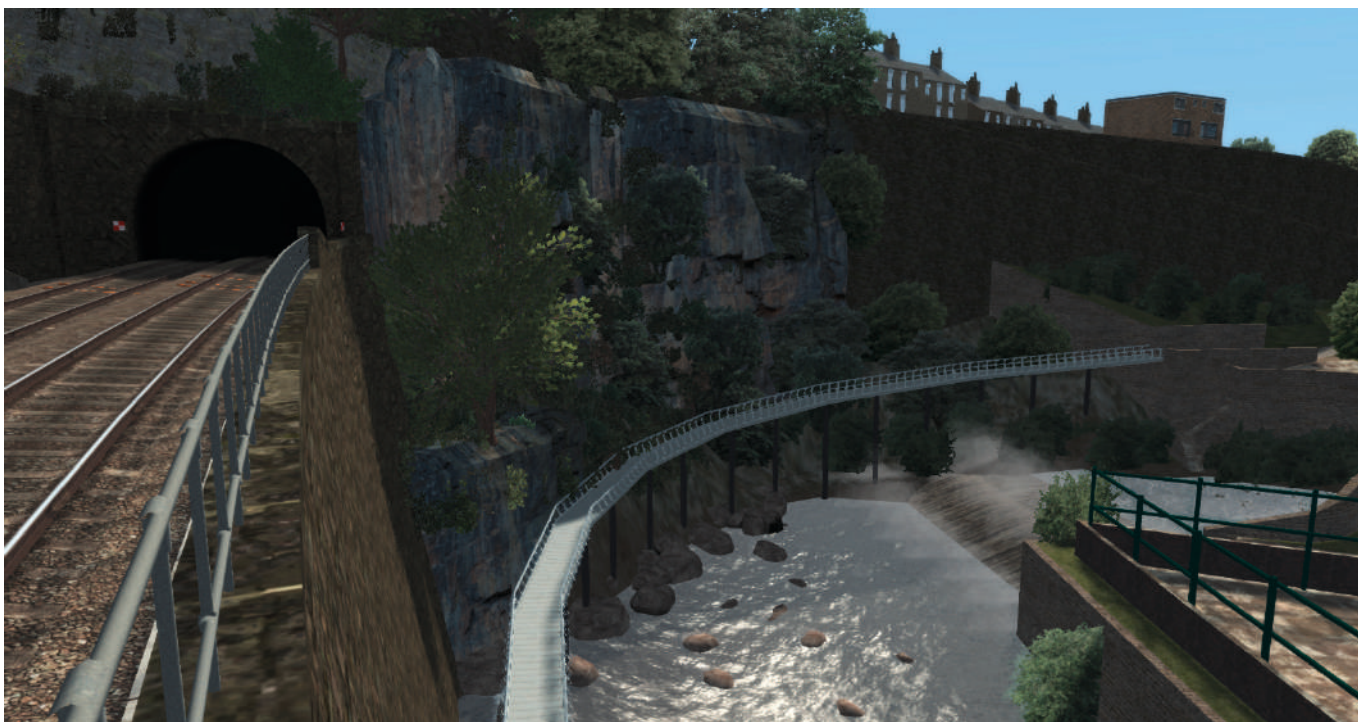
This picture shows the tunnel entrance, looking south. The disused tunnel to the left carried the Hayfield branch, which closed in 1970; today it is part of the 2.5-mile Sett Valley Trail which links the village of Hayfield and the town of New Mills.

Torr Vale Mill



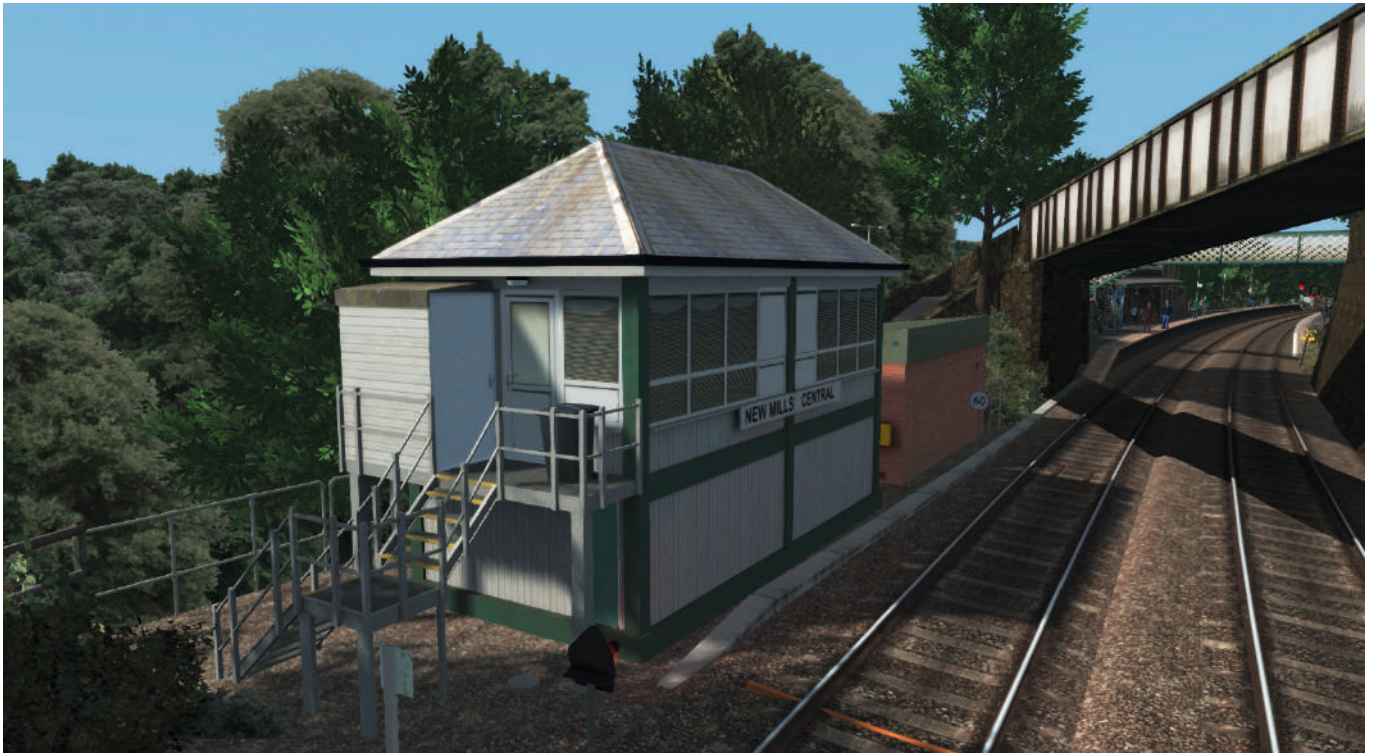
This Grade II listed former industrial cotton mill was built in the late 1780s and was still in use producing towelling products until December 2000.

New Mills Millennium Walkway



Opened in 2000, the Millennium Walkway stands on stilts above the River Goyt. It is partly cantilevered from the sheer stone railway embankment, reputed to be the finest retaining wall in the country's rail network.

New Mills Central signal box



Built in 1924.

Goyt Cliff Viaduct



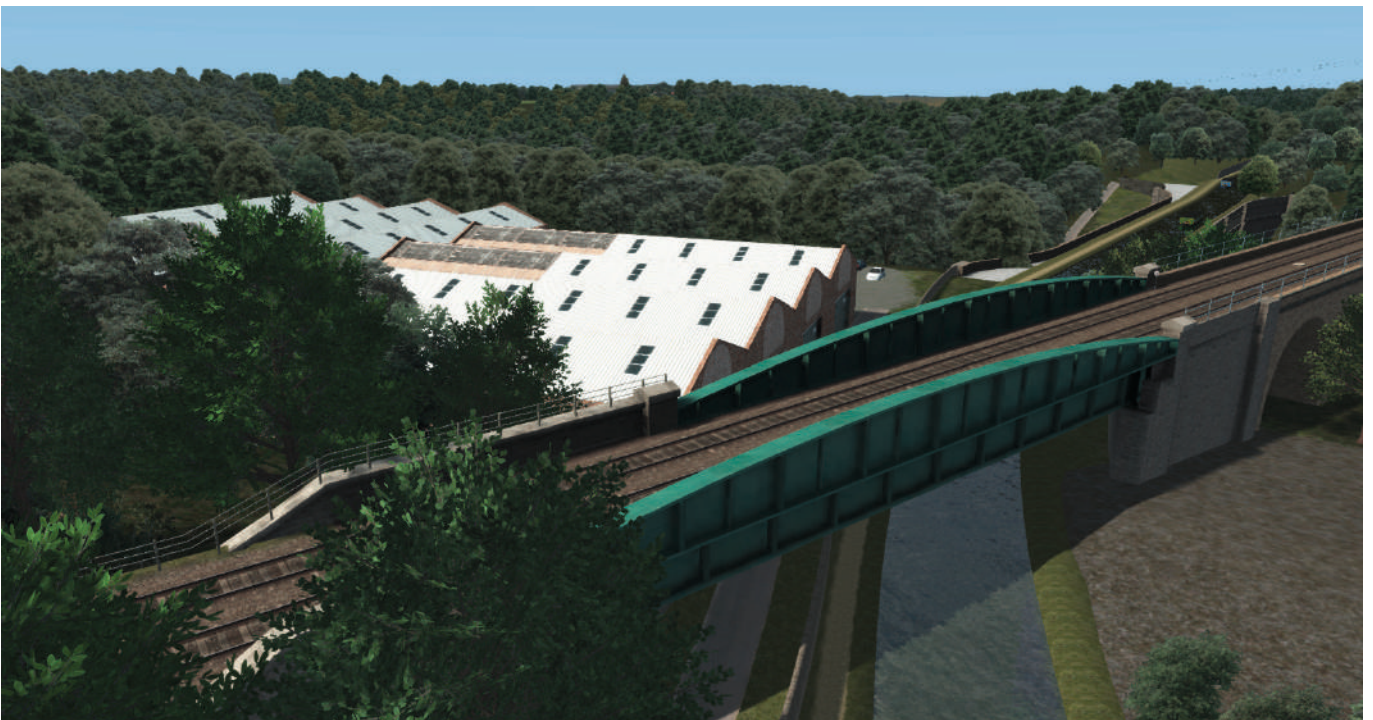
This Grade II listed viaduct was built in 1865 for the Manchester, Sheffield and Lincolnshire Railway Company. Seven semi-circular arch spans and one iron girder carry the railway over the River Goyt.

Marple Wharf Junction



The line to Rose Hill Marple branches off here. The line originally continued to Macclesfield, but this closed in 1970.

Marple Aqueduct



Brought into use in 1800, this aqueduct was built to carry the lower level of the Peak Forest Canal across the River Goyt. It is the highest canal aqueduct in England.

Marple Viaduct



The viaduct was built alongside Marple Aqueduct in 1863 and is made mainly from stone, with one wrought iron girder span. There are twelve stone arches and the viaduct crosses a road, the Peak Forest Canal and the River Goyt.

Romiley Junction signal box



Opened in 1892 and closed in 2015.

Romiley Junction



The line branching to the right heads to Hyde. The branch to the left heads towards Manchester.

Brinnington M60 motorway bridge



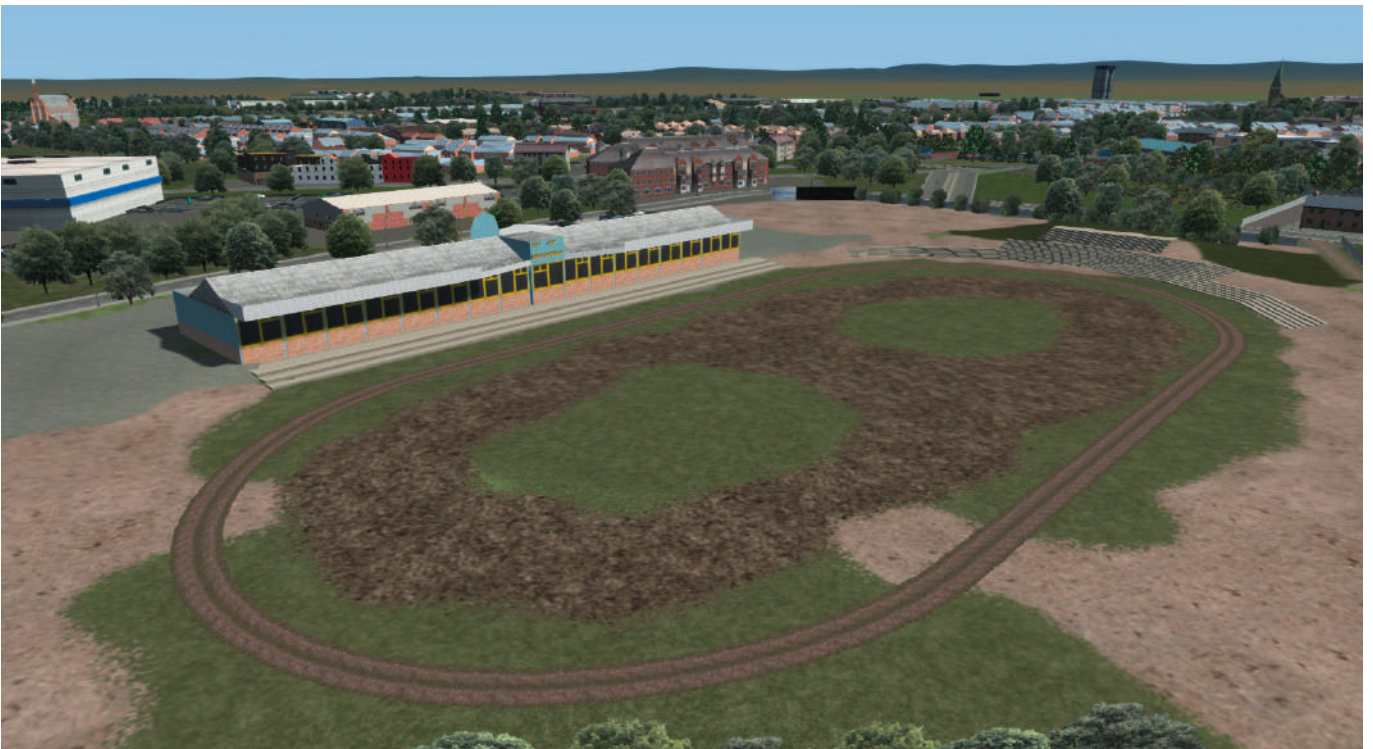
Built in 1983, this 120m Warren truss bridge is 14.6m high and 11m wide.

Reddish Vale Viaduct



This 16-span viaduct was built in 1875.

Belle Vue Stadium



This stadium was originally a greyhound racing track and has also been used for motorcycle speedway and other motor sports. It is now closed and destined to become a new housing development.

Ashburys East Junction



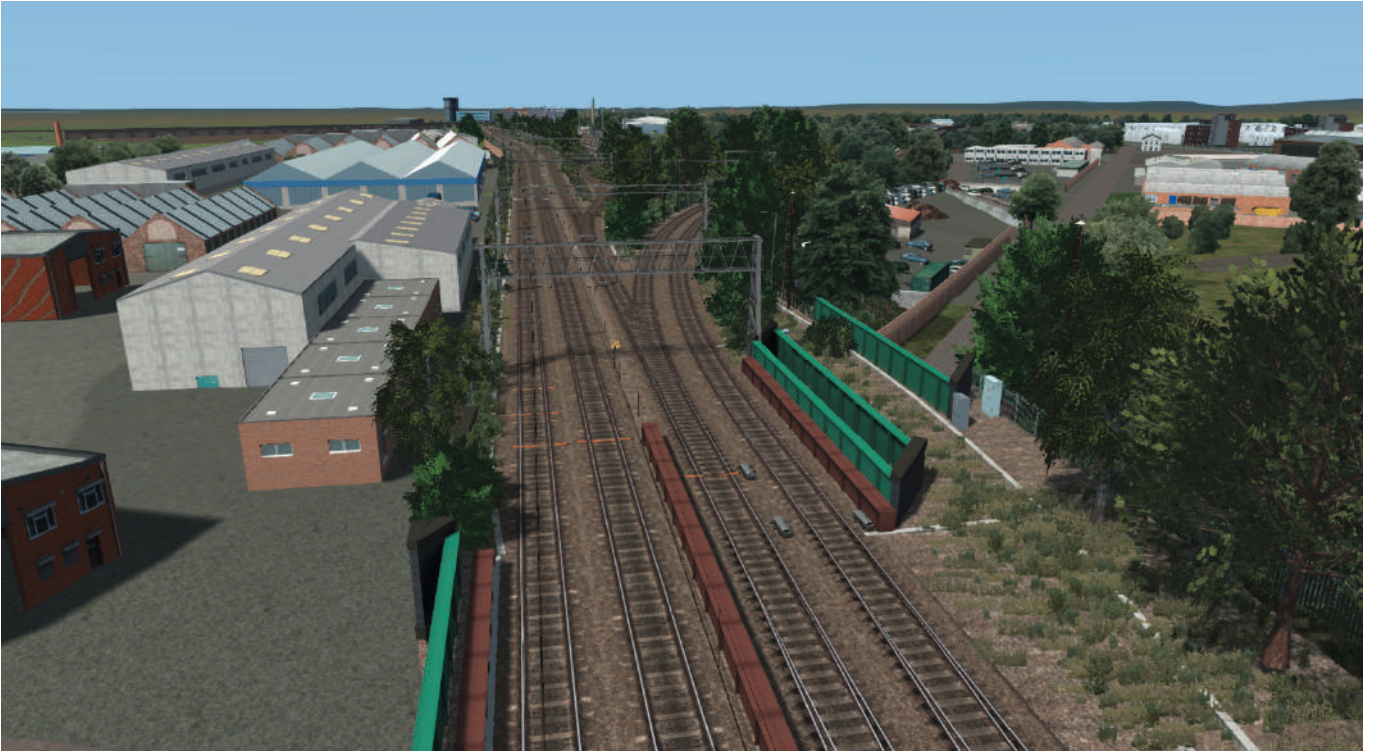
Here the Hope Valley line merges with the line coming from Guide Bridge.

Network Rail Manchester Rail Operating Centre



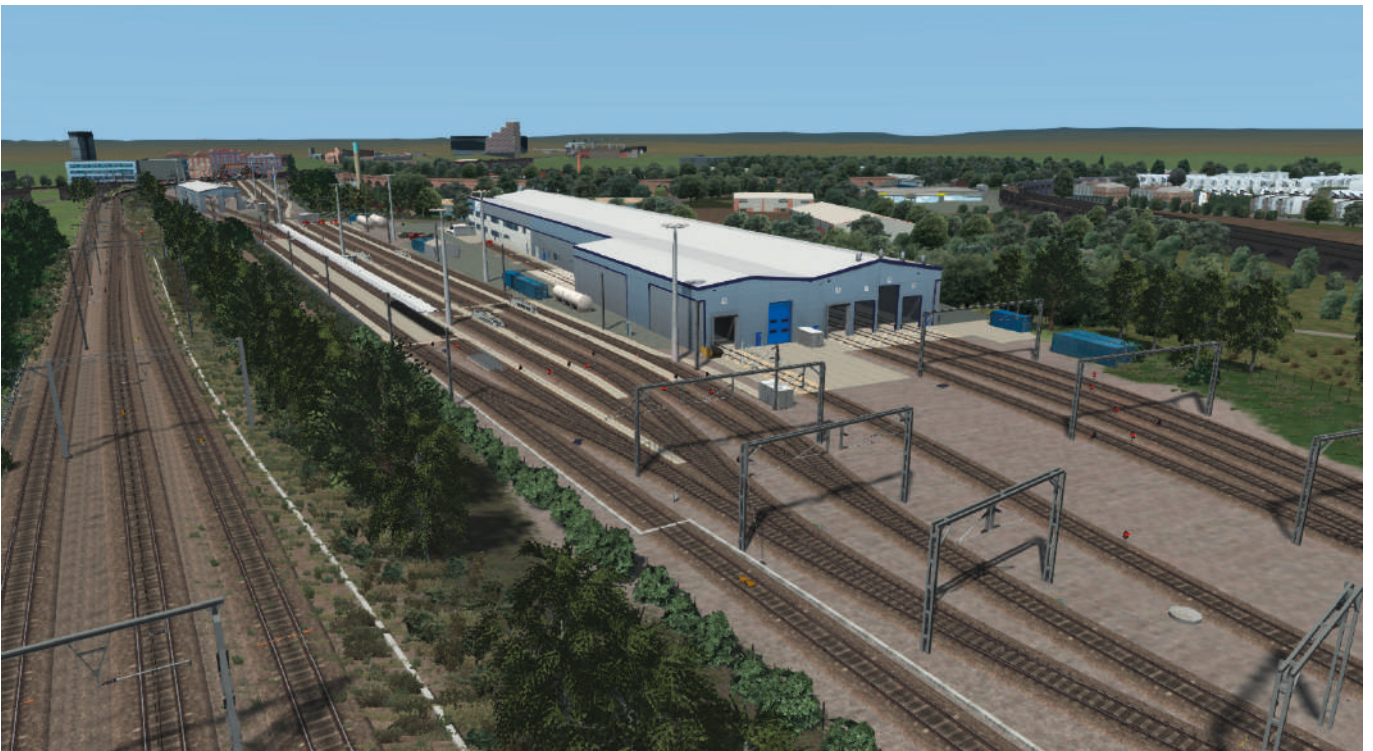
Opened in 2014, this signalling centre will eventually control large parts of the railway in the north-west of England. The Manchester ROC is one of 12 which will eventually manage the entire rail network across Britain, replacing more than 800 signal boxes and other operational locations currently used to control trains.

Ashburys West Junction



This was opened in 2006 for the introduction of the Class 185 fleet.

Ardwick Train Maintenance Depot



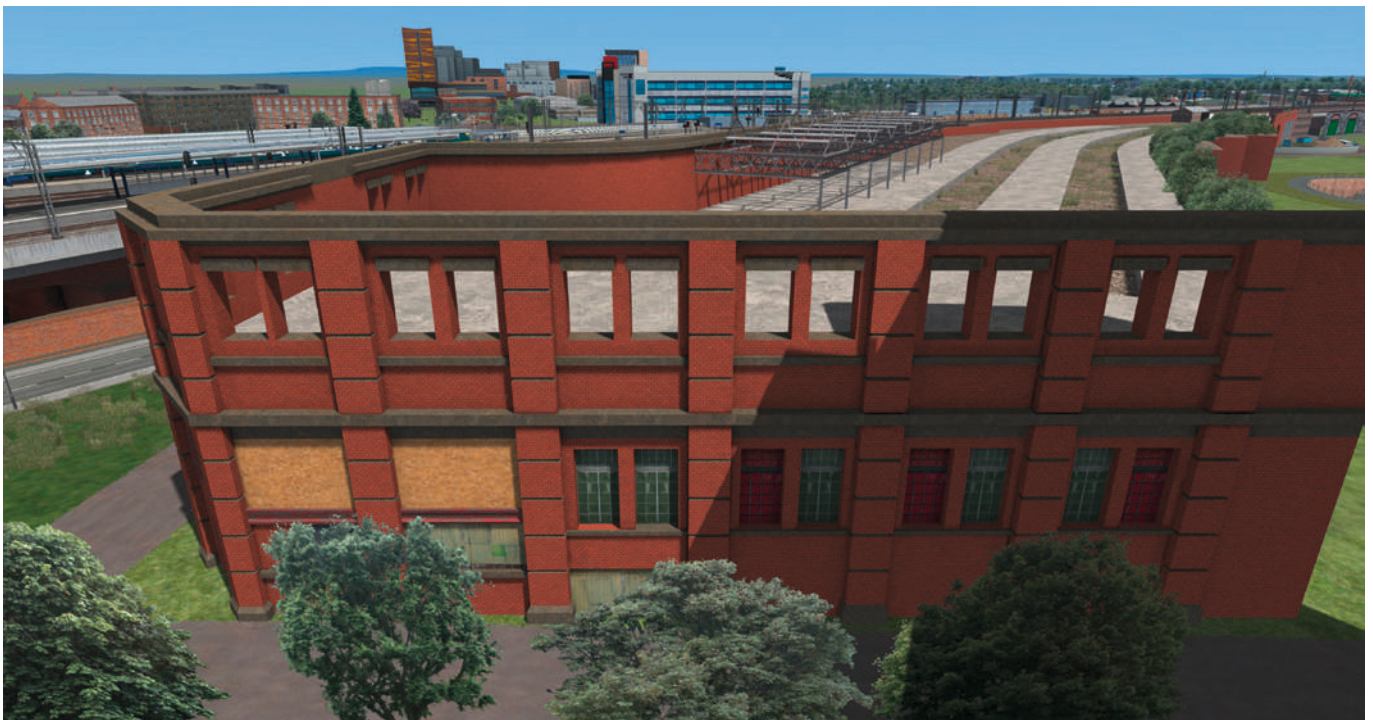
The Ardwick TMD was opened in 2006 for the servicing of Class 185 DMUs and electrified in 2012-13 to allow the servicing of Class 350/4 EMUs.

Network Rail Square One



The size of the Square One building and its proximity to Piccadilly station made it an obvious location for Network Rail offices. The building was previously a much less attractive parcel depot.

Manchester Mayfield station (closed)



Manchester Mayfield station opened in 1910 as a relief station to alleviate crowding at Manchester Piccadilly. It was closed to passengers in 1960, saw further use as a parcel depot and was closed permanently to all services in 1986.

Star and Garter pub



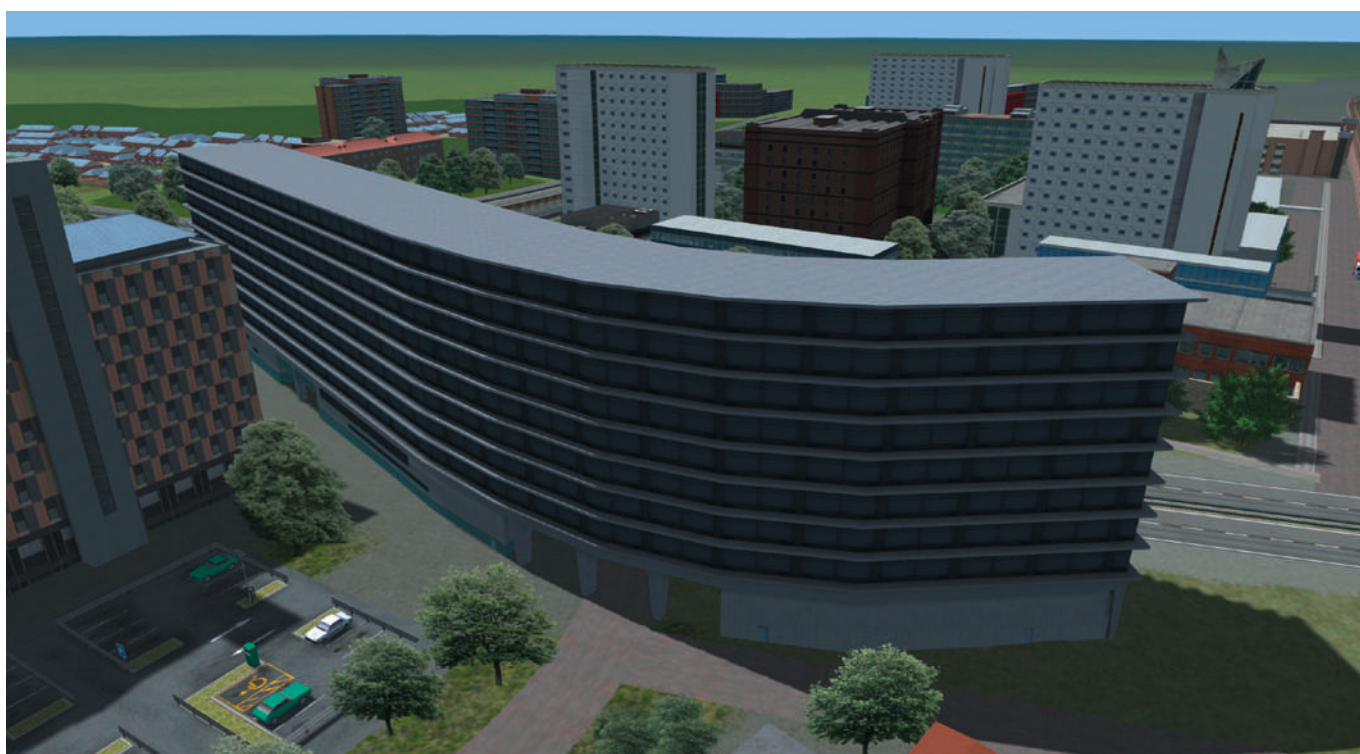
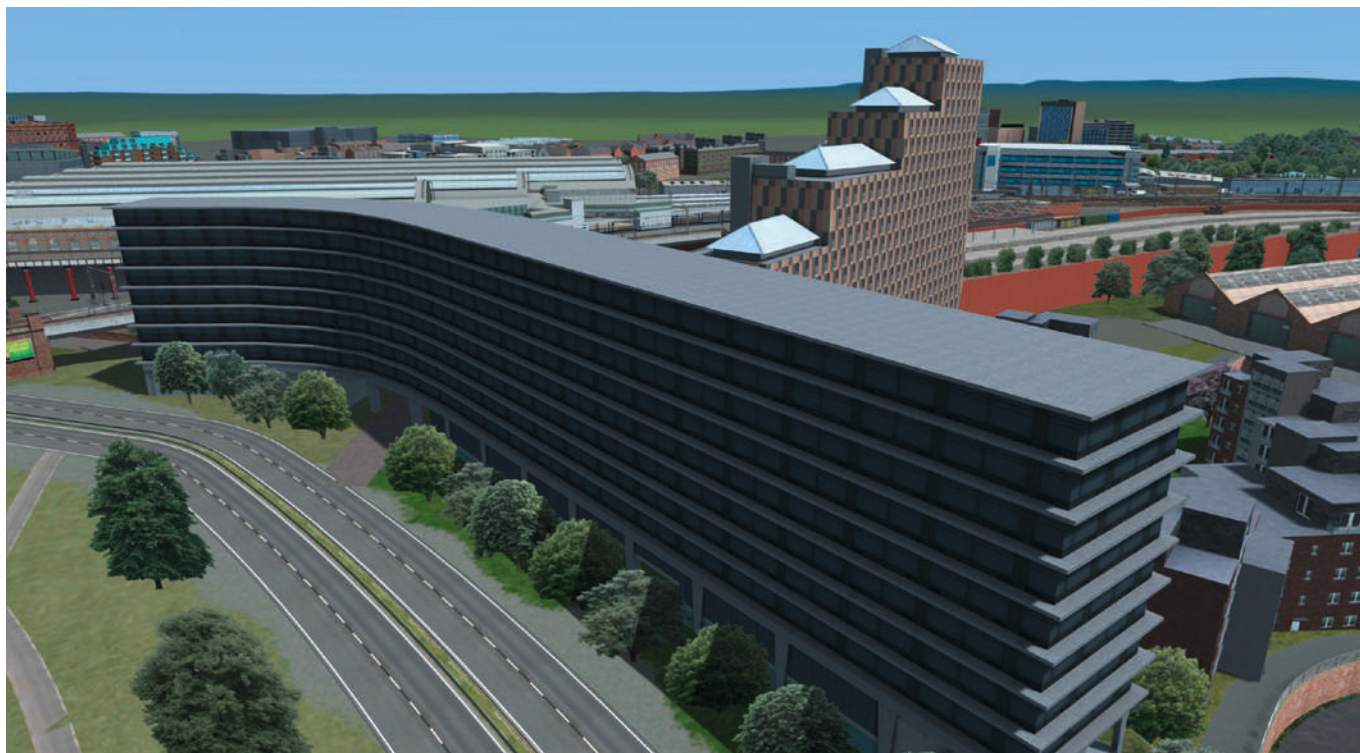
This famous pub on Fairfield Street, behind Piccadilly station, was built in 1803 about 100 yards from its current location. When the station and surrounding area was expanded in 1849, the pub was moved brick by brick to its current site and reopened in 1877.

London Road Fire Station building



Built in 1906, this former fire station building also housed a police station, ambulance station, bank, coroner's court and gas meter testing facilities. The fire station closed in 1986 and since then it has been largely unused.

Macdonald Manchester Hotel



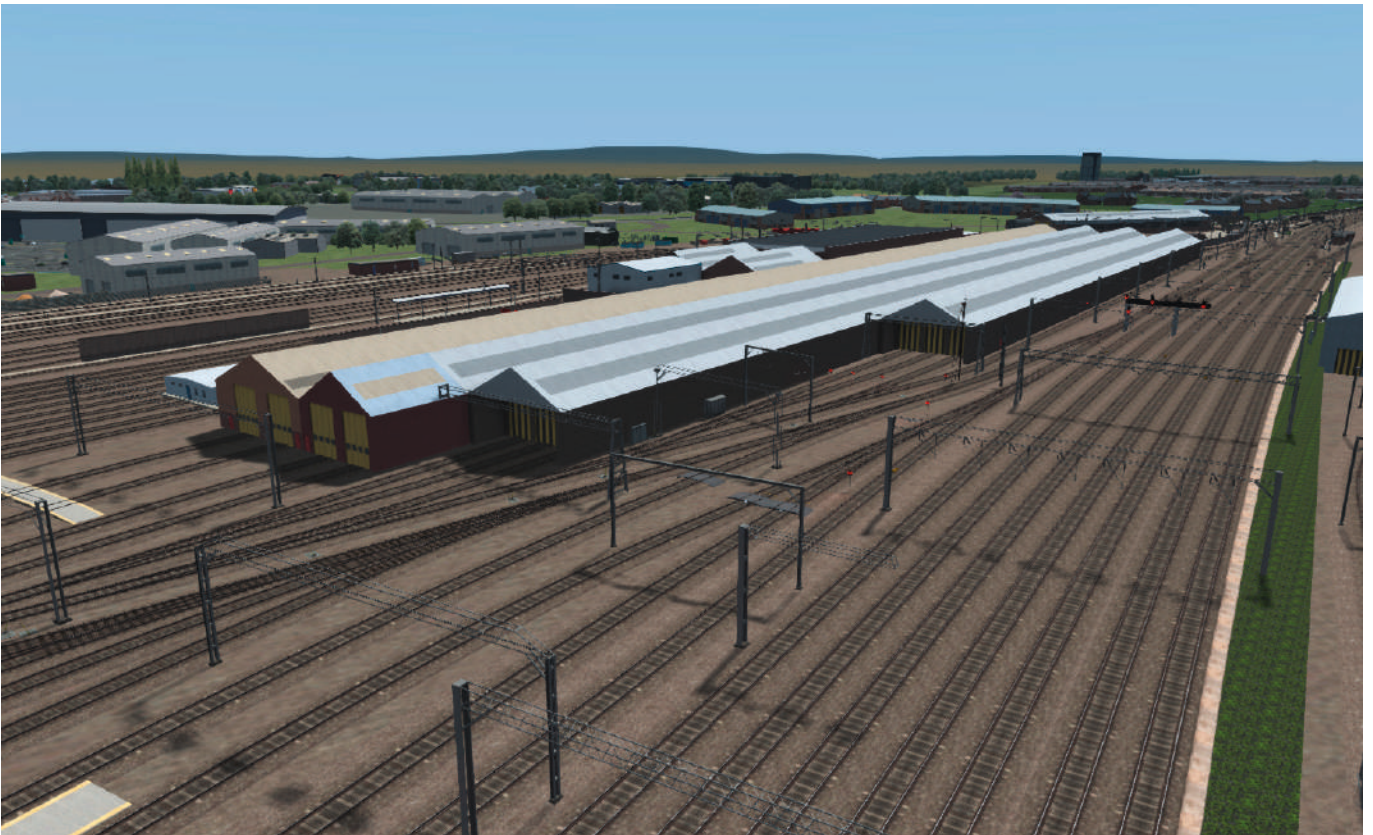
Manchester's largest four-star hotel was formerly an office block, built in 1972.

FEATURES TO LOOK OUT FOR ON THE ROUTE

Driving south from Ardwick Junction to Stockport and branching off towards New Mills

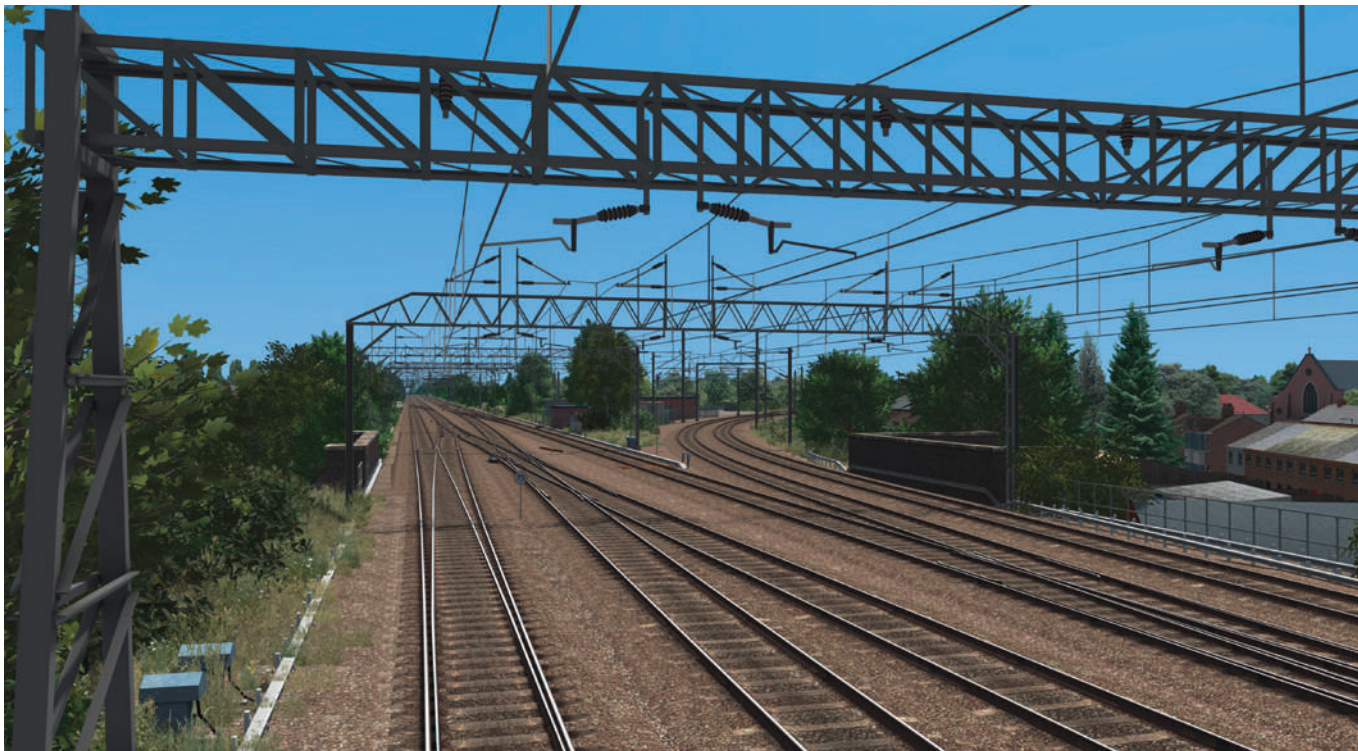
Here are some of the landmark buildings and other features of interest along the route as you drive south from Ardwick Junction to Stockport, and branching off towards New Mills:

Longsight Train Maintenance Depot



Opened in 1842, this is one of the largest depots in the UK, with a capacity for 179 carriages.

Slade Lane Junction



The Styal line branches off here towards Wilmslow.

McVities factory



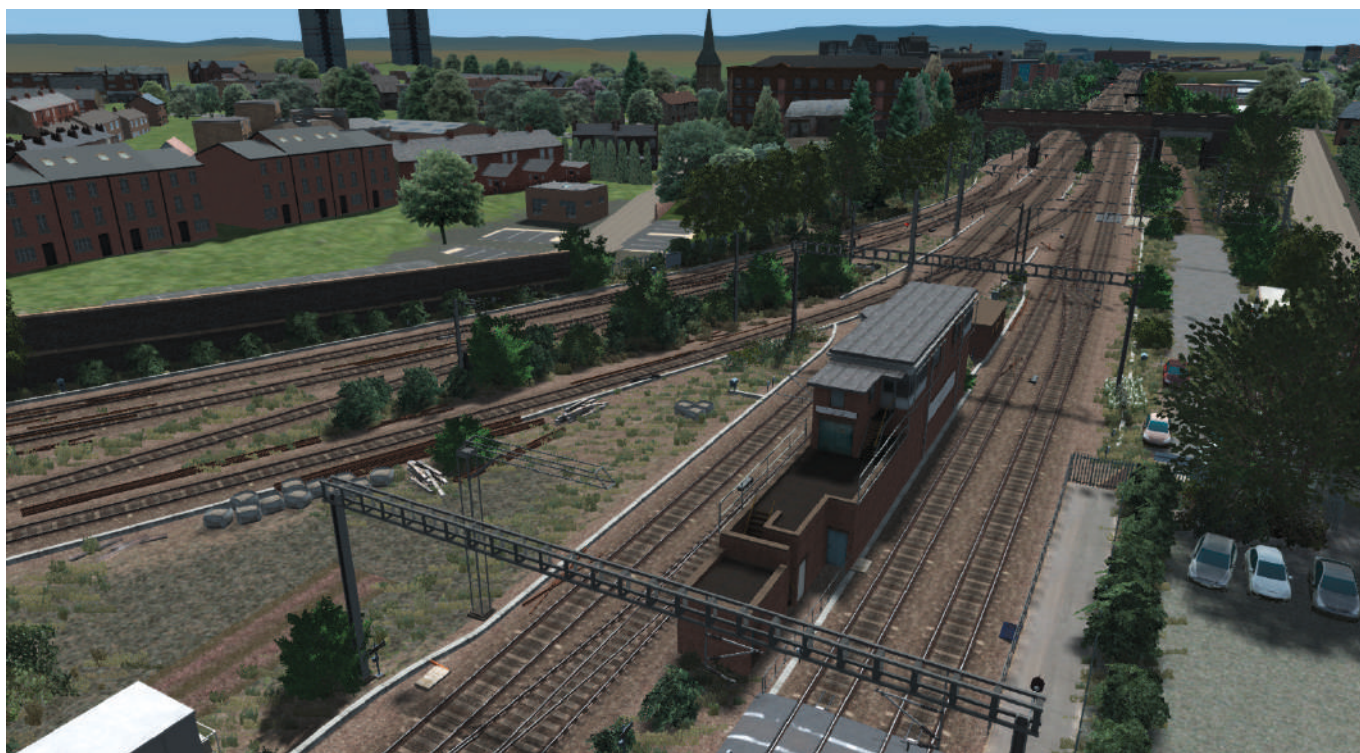
This McVities factory opened in 1917 and it currently produces Jaffa Cakes, Penguins and Digestive biscuits.

Heaton Norris Junction signal box



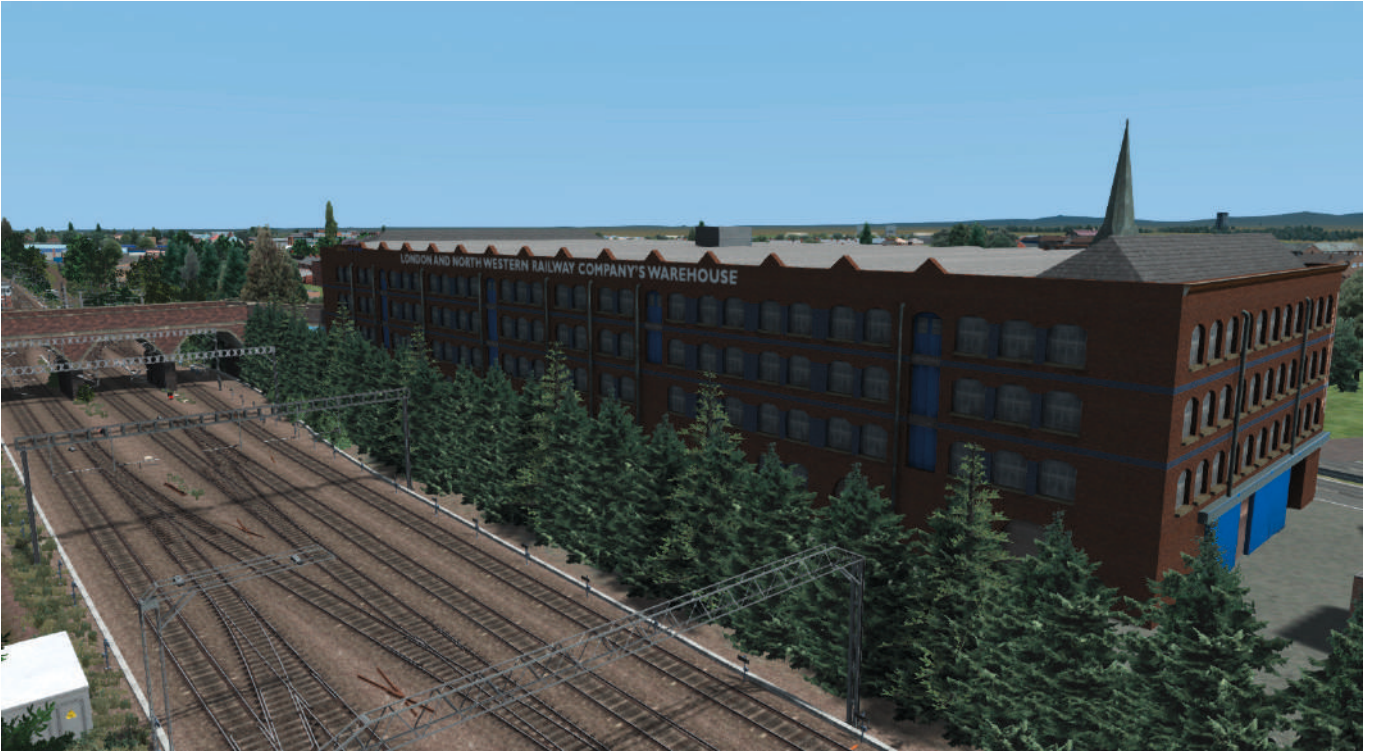
Built in 1955.

Heaton Norris Junction



The Stockport-Stalybridge line joins here.

LNWR Goods Warehouse



The LNWR Goods Warehouse was built in 1877.

Stockport Viaduct



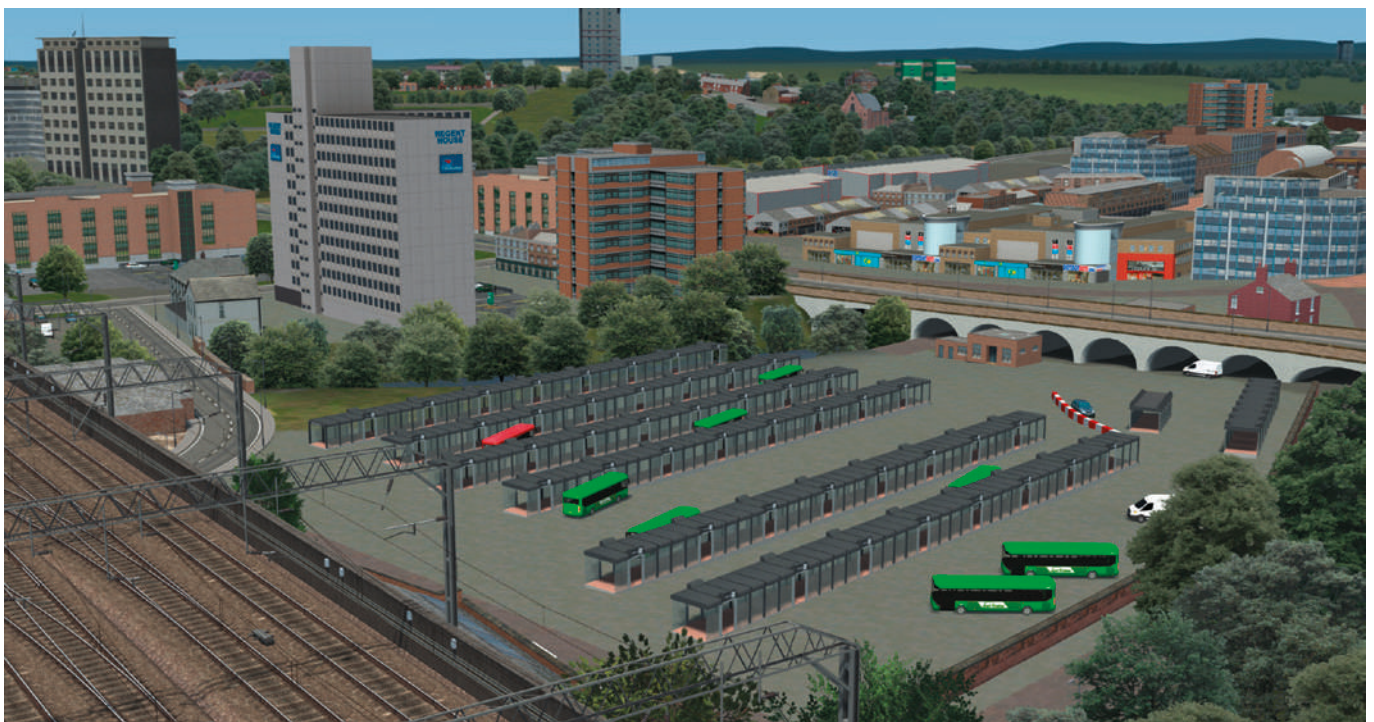
Stockport Viaduct, built in 1840 and one of the UK's largest brick structures, carries the West Coast Main Line across the River Mersey valley. The viaduct is 547m in length.

Hat Works museum



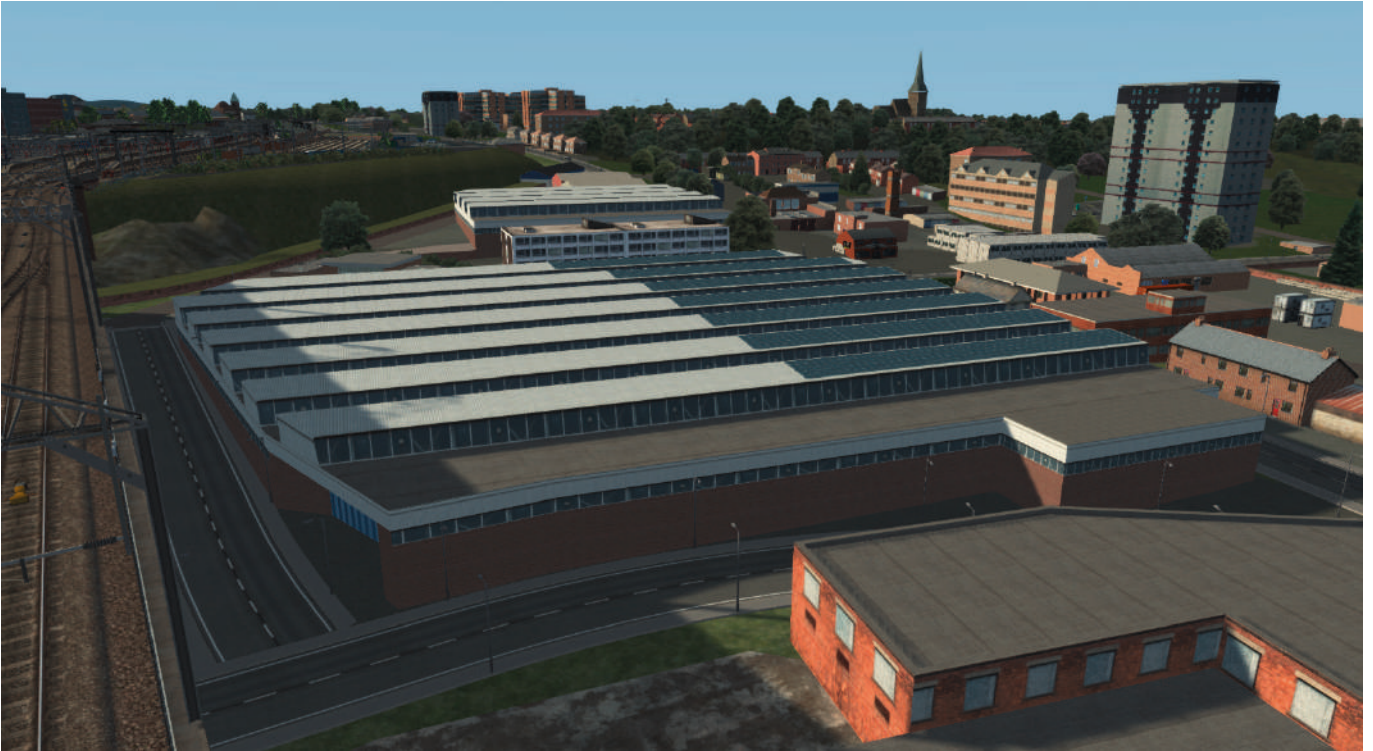
The Hat Works museum in Stockport opened in 2000 and is the UK's only dedicated hatting museum, The building was a cotton spinning mill before becoming a hat works in the 1890s.

Stockport Bus Station



The bus station closed in 2021 after 40 years of continuous operation and its replacement is due to be completed in 2024.

Daw Bank Stagecoach depot



This bus depot was built in 1968.

Edgeley Junction No.1 signal box



Built in 1884.

Edgeley Junction No.2 signal box



Built in 1884.

Edgeley Junction



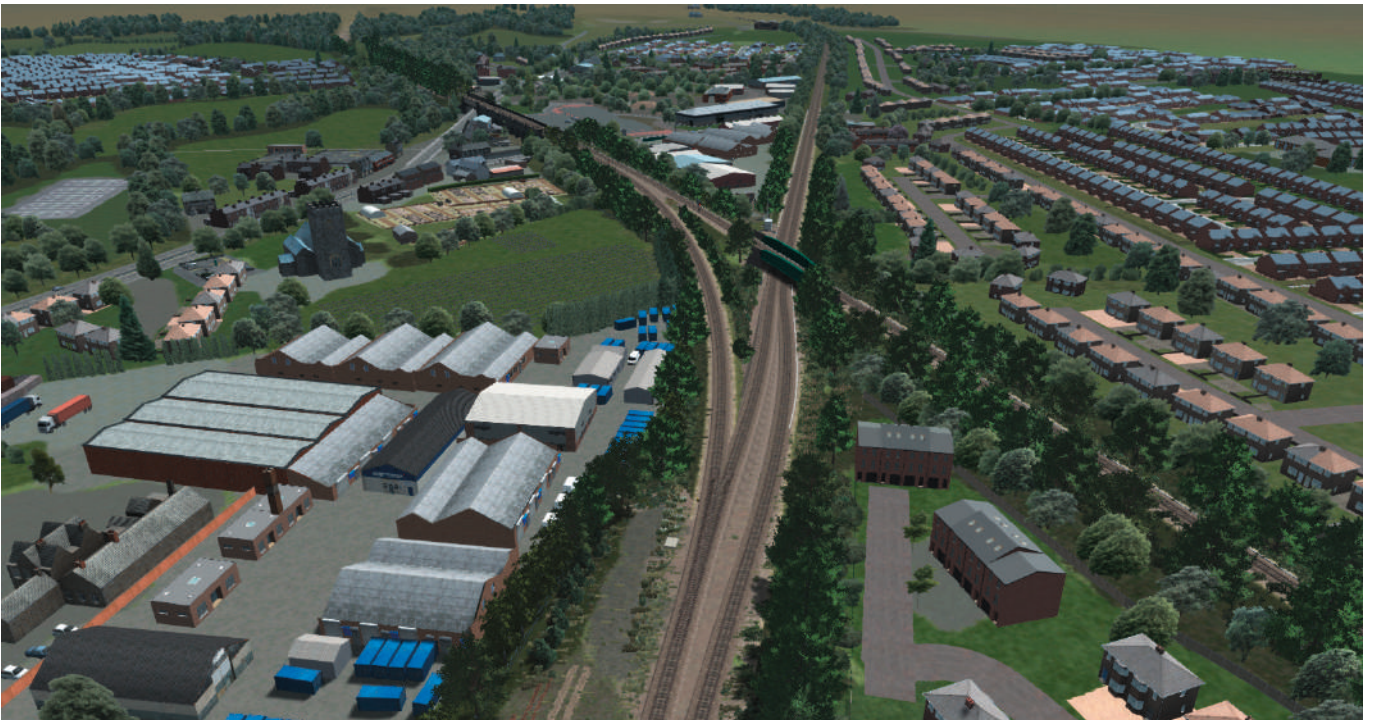
The West Coast Main Line and Mid Cheshire Line diverge here.

Stepping Hill Hospital



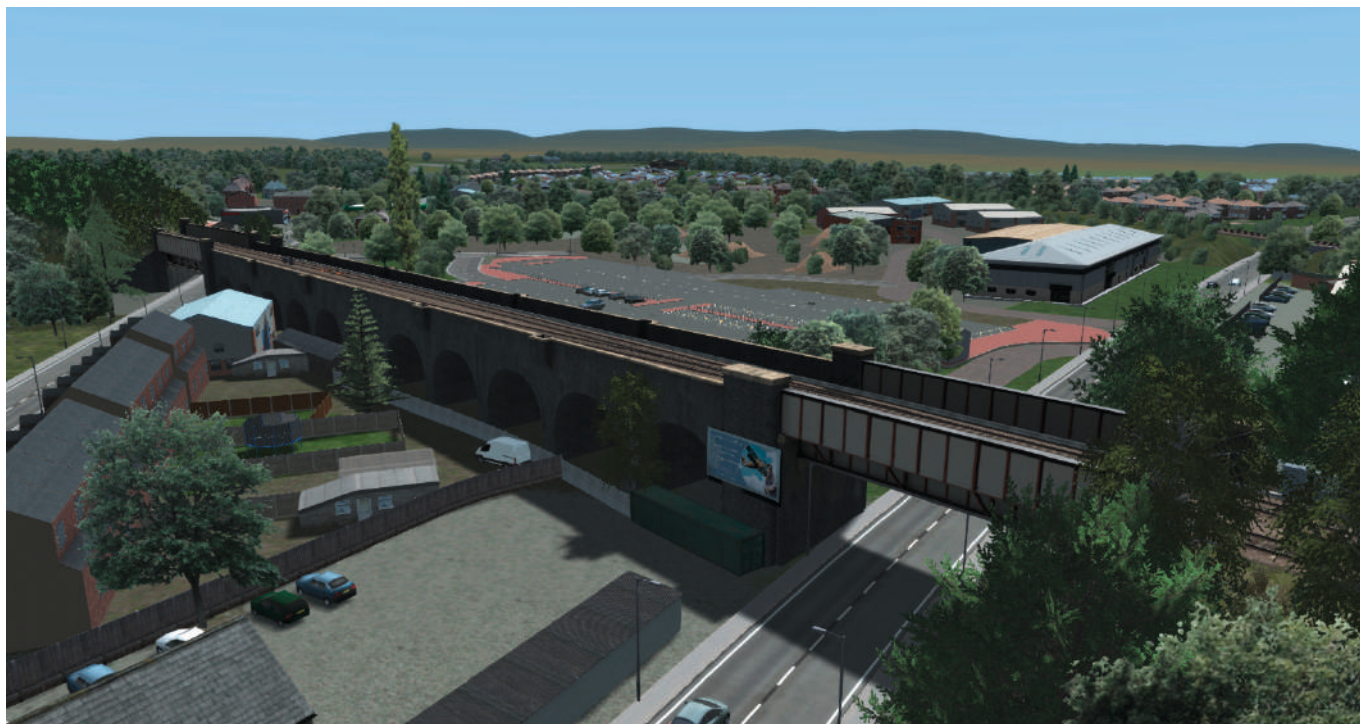
Stepping Hill Hospital in Stockport serves a population of some 350,000 people and was opened as the Stepping Hill Poor Law Hospital in 1905. The large chimney is for the boiler house.

Hazel Grove chord



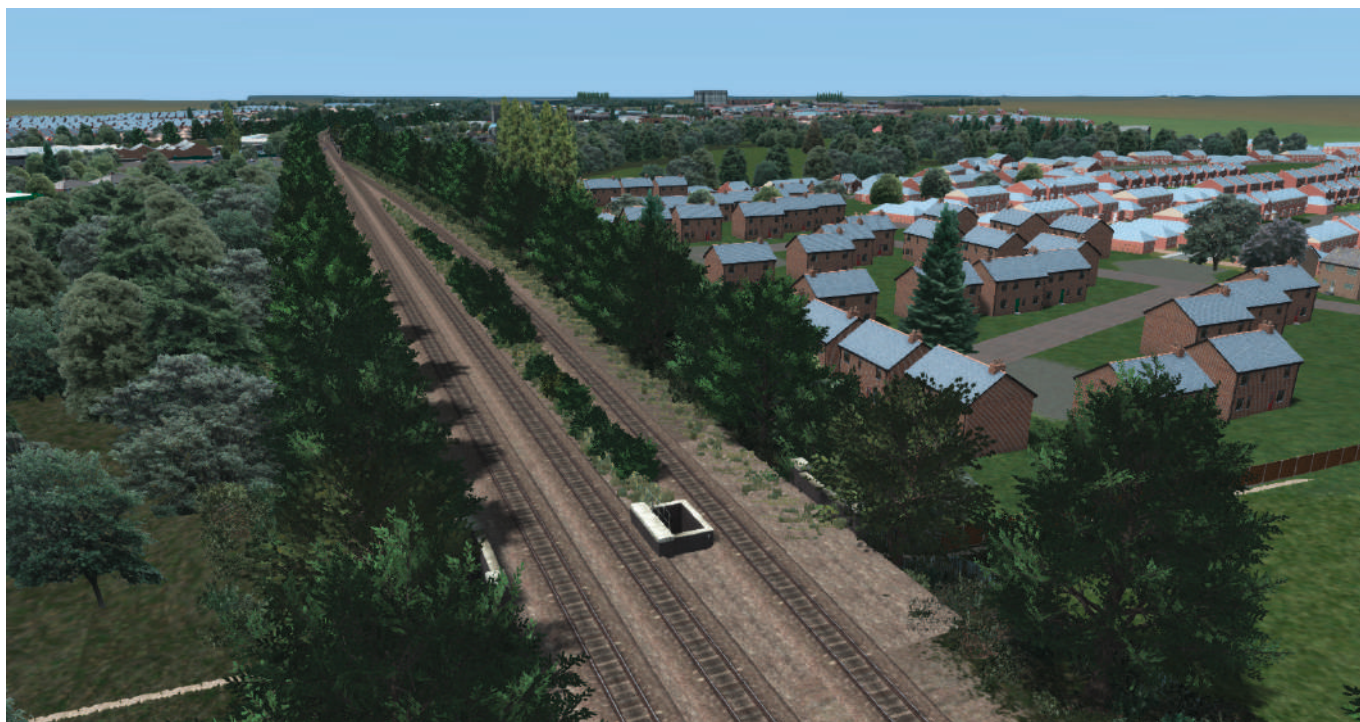
Opened in 1986, the Hazel Grove chord allows Hope Valley services to join the line to Manchester at Hazel Grove. Before the chord was built, all services ran through New Mills.

Norbury Viaduct



The viaduct was built in 1902 by the Midland Railway as part of the New Mills to Heaton Mersey line, which formed part of its main line between Manchester Central and London St Pancras.

Site of Hazel Grove Midland Railway station



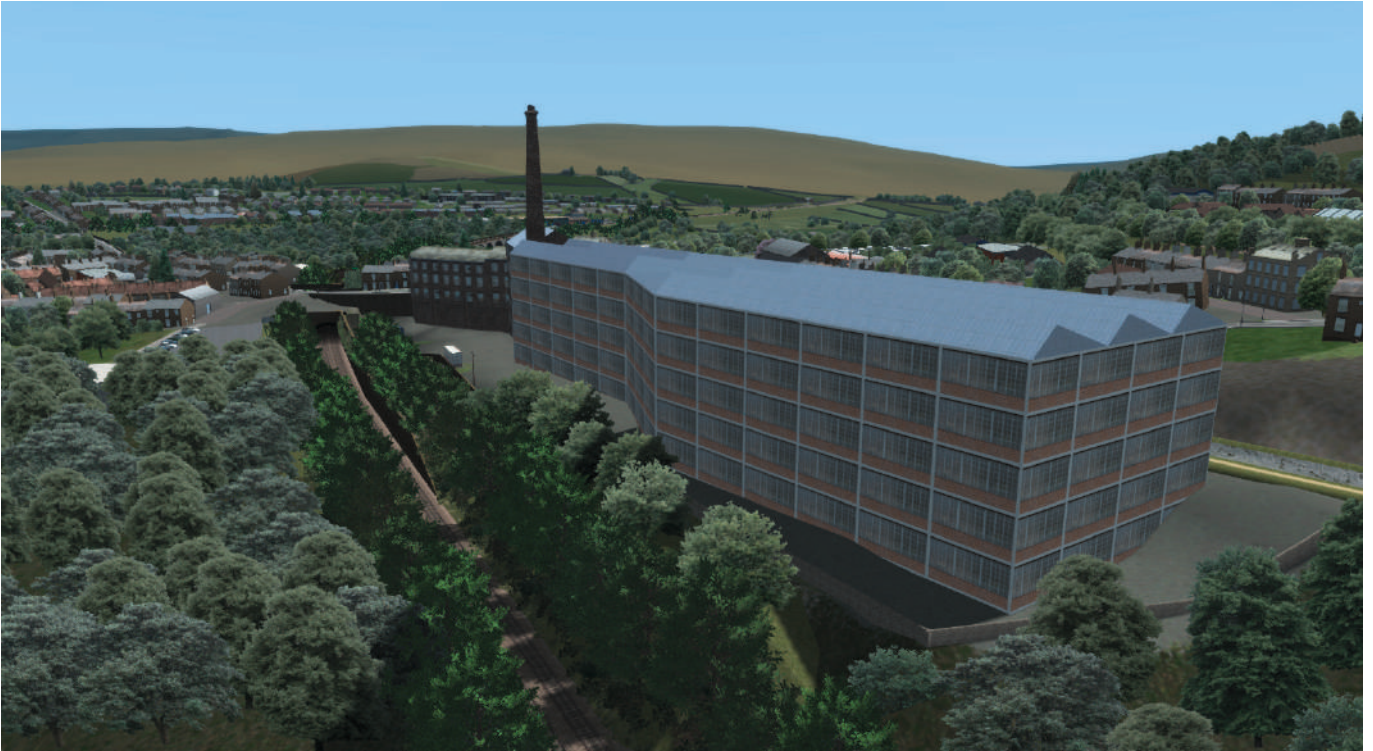
This is the site of the former Hazel Grove Midland Railway station. The station was underused due to its inconvenient location and was only in use between 1902 and 1917.

Disley Tunnel



The tunnel was built by the Midland Railway in 1902, it is 3,535m long, making it the second-longest tunnel on the Midland system.

Swizzels factory



Originally built in 1883 as a cotton mill, this building became the Swizzels Matlow Limited factory in 1940.

Newtown Viaduct



Built in 1902.

SCENARIOS

Choosing a scenario

When you first start Train Simulator, select the 'Drive' option in the Main Menu, then choose the Standard scenarios.

Use the scroll bar on the right side to scroll down to 'Just Trains – Hope Valley'.

You can now choose your scenario and click on the 'Go' button.

Twelve scenarios are included which require additional payware content.

Ten scenarios are included which only require default Train Simulator stock.

The add-on requirements for each scenario are listed in the descriptions, but here's a list of all the add-ons required to operate those scenarios which require additional payware stock.

Just Trains

- [Class 222 Advanced 2019](#)
- [Class 20 Advanced Collection](#)
- [Voyager Advanced 2019](#)

Steam

- [EWS Class 66 v2.0 Loco Add-On](#)
- [Freightliner Class 66 v2.0 Loco Add-On](#)
- [Freightliner Class 70 Loco Add-On](#)
- [Network SouthEast Class 159 DMU Add-On](#)
- [Settle to Carlisle Route Add-On](#)
- [BR Class 150/1 DMU Add-On](#)
- [Welsh Marches: Newport - Shrewsbury Route Add-On](#)
- [BR Class 170 'Turbostar' DMU Add-On](#)
- [South Wales Coastal: Bristol - Swansea Route Add-On](#)
- [Portsmouth Direct Line: London Waterloo - Portsmouth Route Add-On](#)
- [Class 390 EMU Add-On](#)

Armstrong Powerhouse

- [Class 43 \(MTU\)/Mk3 Enhancement Pack](#)
- [Class 158 \(Perkins\) Enhancement Pack](#)
- [Class 158/159 \(Cummins\) Enhancement Pack](#)
- [Class 66 Enhancement Pack](#)
- [JPA Wagon Pack](#)
- [HIA Wagon Pack](#)
- [Class 156 Diesel Multiple Unit Pack](#)
- [Class 142 Diesel Multiple Unit Pack](#)
- [Class 150/1 Enhancement Pack](#)
- [Class 319 Electric Multiple Unit Pack Vol. 1](#)
- [Class 150/2 Diesel Multiple Unit Pack](#)
- [Class 175 Enhancement Pack 2.0](#)
- [Class 350 Enhancement Pack](#)
- [Class 168/170/171 Enhancement Pack](#)

Alan Thomson Sim

- [Alan Thomson Simulation and Imbue Studios - Class 185 Multiple Unit Pack](#)

Standard scenarios requiring additional payware add-ons

6E56 06:22 Tunstead – Drax

Drive 66617 from Chinley East Junction to Sheffield working 6E56 Tunstead-Drax loaded with limestone in September 2018.

Difficulty: Medium | Duration: 45 minutes

REQUIREMENTS:

Just Trains

- Voyager Advanced 2019

Armstrong Powerhouse

- Class 66 Enhancement Pack
- HIA Wagon Pack
- Class 142 Diesel Multiple Unit Pack
- Class 158 (Perkins) Enhancement Pack
- Class 158/159 (Cummins) Enhancement Pack

Steam

- EWS Class 66 v2.0 Loco Add-On
- Freightliner Class 66 v2.0 Loco Add-On
- Settle to Carlisle Route Add-On
- Network SouthEast Class 159 DMU Add-On

Alan Thomson Sim

- Alan Thomson Simulation and Imbue Studios - Class 185 Multiple Unit Pack

0H08 07:26 Earles Sidings – Bredbury R.T.S.

Drive a Class 66 from Earles Sidings to Bredbury R.T.S. in preparation to work 6F33 to Runcorn later in the morning.

Difficulty: Easy | Duration: 60 minutes

REQUIREMENTS:

Armstrong Powerhouse

- Class 66 Enhancement Pack
- HIA Wagon Pack
- Class 142 Diesel Multiple Unit Pack
- JPA Wagon Pack
- Class 150/1 Enhancement Pack

Steam

- EWS Class 66 v2.0 Loco Add-On
- Freightliner Class 66 v2.0 Loco Add-On
- Settle to Carlisle Route Add-On

- Freightliner Class 70 Loco Add-On
- BR Class 150/1 DMU Add-On

Alan Thomson Sim

- Alan Thomson Simulation and Imbue Studios - Class 185 Multiple Unit Pack

2H11 11:21 Hazel Grove – Manchester Piccadilly

Drive a Class 319 from Hazel Grove to Manchester Piccadilly.

Difficulty: Easy | Duration: 30 minutes

REQUIREMENTS:

Just Trains

- Voyager Advanced 2019

Armstrong Powerhouse

- Class 142 Diesel Multiple Unit Pack
- Class 319 Electric Multiple Unit Pack Vol. 1
- Class 150/1 Enhancement Pack
- Class 156 Diesel Multiple Unit Pack
- Class 158/159 (Cummins) Enhancement Pack
- Class 158 (Perkins) Enhancement Pack
- Class 175 Enhancement Pack 2.0
- Class 350 Enhancement Pack

Steam

- BR Class 150/1 DMU Add-On
- Network SouthEast Class 159 DMU Add-On
- South Wales Coastal: Bristol - Swansea Route Add-On
- Class 390 EMU Add-On
- Portsmouth Direct Line: London Waterloo - Portsmouth Route Add-On

Alan Thomson Sim

- Alan Thomson Simulation and Imbue Studios - Class 185 Multiple Unit Pack

5S07 Longsight – New Mills / 2S07 New Mills Central – Manchester Piccadilly

Drive 150114 from Longsight Depot to New Mills Central via Stockport on 5S07 before returning on service 2S07 to Manchester Piccadilly via Romiley in early Summer 2018.

Difficulty: Medium | Duration: 70 minutes

REQUIREMENTS:

Just Trains

- Voyager Advanced 2019

Armstrong Powerhouse

- Class 319 Electric Multiple Unit Pack Vol. 1
- Class 150/2 Diesel Multiple Unit Pack
- Class 150/1 Enhancement Pack
- Class 142 Diesel Multiple Unit Pack
- Class 158/159 (Cummins) Enhancement Pack
- Class 66 Enhancement Pack
- HIA Wagon Pack

Steam

- BR Class 150/1 DMU Add-On
- Network SouthEast Class 159 DMU Add-On
- EWS Class 66 v2.0 Loco Add-On
- Freightliner Class 66 v2.0 Loco Add-On

Alan Thomson Sim

- Alan Thomson Simulation and Imbue Studios - Class 185 Multiple Unit Pack

6H41 Tunstead – Bredbury Tilcon

Drive 6H41 Tunstead – Bredbury Tilcon from Chinley South Junction to Bredbury in Summer 2018.

Difficulty: Hard | Duration: 60 minutes

REQUIREMENTS:

Armstrong Powerhouse

- Class 66 Enhancement Pack
- Class 142 Diesel Multiple Unit Pack
- Class 150/1 Enhancement Pack
- HIA Wagon Pack

Steam

- Settle to Carlisle Route Add-On
- EWS Class 66 v2.0 Loco Add-On
- Freightliner Class 66 v2.0 Loco Add-On
- BR Class 150/1 DMU Add-On

Alan Thomson Sim

- Alan Thomson Simulation and Imbue Studios - Class 185 Multiple Unit Pack

2S77 20:14 Sheffield – Manchester Piccadilly

Drive a Class 142 from Sheffield to Manchester on 2S77 20:14 Sheffield to Manchester during the summer of 2018.

Difficulty: Medium | Duration: 75 minutes

REQUIREMENTS:

Just Trains

- Voyager Advanced 2019

Armstrong Powerhouse

- Class 142 Diesel Multiple Unit Pack
- Class 150/2 Diesel Multiple Unit Pack
- Class 158/159 (Cummins) Enhancement Pack
- JPA Wagon Pack
- Class 66 Enhancement Pack
- Class 150/1 Enhancement Pack
- Class 156 Diesel Multiple Unit Pack
- Class 319 Electric Multiple Unit Pack Vol. 1

Steam

- Network SouthEast Class 159 DMU Add-On
- EWS Class 66 v2.0 Loco Add-On
- Freightliner Class 66 v2.0 Loco Add-On
- Settle to Carlisle Route Add-On
- BR Class 150/1 DMU Add-On

Alan Thomson Sim

- Alan Thomson Simulation and Imbue Studios - Class 185 Multiple Unit Pack

1L13 14:52 Liverpool Lime Street – Norwich

Drive 1L13 14:52 Liverpool – Norwich from Manchester Piccadilly to Sheffield in August 2018.

Difficulty: Medium | Duration: 50 minutes

REQUIREMENTS:

Just Trains

- Voyager Advanced 2019
- Class 222 Advanced 2019

Armstrong Powerhouse

- Class 158/159 (Cummins) Enhancement Pack
- Class 158 (Perkins) Enhancement Pack
- Class 142 Diesel Multiple Unit Pack
- Class 319 Electric Multiple Unit Pack Vol. 1
- Class 150/1 Enhancement Pack
- Class 156 Diesel Multiple Unit Pack
- Class 66 Enhancement Pack
- JPA Wagon Pack
- HIA Wagon Pack

Steam

- BR Class 150/1 DMU Add-On
- Class 390 EMU Add-On
- Freightliner Class 66 v2.0 Loco Add-On
- Network SouthEast Class 159 DMU Add-On

Alan Thomson Sim

- Alan Thomson Simulation and Imbue Studios - Class 185 Multiple Unit Pack

1B68 07:53 Manchester Airport – Cleethorpes

Drive a TPE Class 185 unit working 1B68 between Manchester Piccadilly and Sheffield.

Difficulty: Easy | Duration: 55 minutes

REQUIREMENTS:

Just Trains

- Voyager Advanced 2019

Armstrong Powerhouse

- Class 142 Diesel Multiple Unit Pack
- Class 319 Electric Multiple Unit Pack Vol. 1
- JPA Wagon Pack
- Class 150/1 Enhancement Pack
- Class 156 Diesel Multiple Unit Pack
- Class 158 (Cummins) Enhancement Pack
- Class 66 Enhancement Pack
- HIA Wagon Pack
- Class 350 Enhancement Pack

Steam

- Portsmouth Direct Line: London Waterloo - Portsmouth Route Add-On
- Class 390 EMU Add-On
- BR Class 150/1 DMU Add-On
- Network SouthEast Class 159 DMU Add-On
- Freightliner Class 66 v2.0 Loco Add-On

Alan Thomson Sim

- Alan Thomson Simulation and Imbue Studios - Class 185 Multiple Unit Pack

2S82 10:49 Manchester Piccadilly – Sheffield

Drive a Northern Class 150/2 on a stopper service to Sheffield.

Difficulty: Easy | Duration: 80 minutes

REQUIREMENTS:

Just Trains

- Class 222 Advanced 2019

Armstrong Powerhouse

- Class 150/2 Diesel Multiple Unit Pack
- Class 150/1 Enhancement Pack
- Class 319 Electric Multiple Unit Pack Vol. 1
- Class 175 Enhancement Pack 2.0
- Class 142 Diesel Multiple Unit Pack
- Class 158 (Cummins) Enhancement Pack
- Class 43 (MTU)/Mk3 Enhancement Pack

Steam

- BR Class 150/1 DMU Add-On
- South Wales Coastal: Bristol - Swansea Route Add-On
- Class 390 EMU Add-On
- Network SouthEast Class 159 DMU Add-On
- Freightliner Class 70 Loco Add-On
- Settle to Carlisle Route Add-On

Alan Thomson Sim

- Alan Thomson Simulation and Imbue Studios - Class 185 Multiple Unit Pack

2S99 18:24 Rose Hill Marple – Manchester Piccadilly

Drive a pair of Northern Pacers from Rose Hill Marple to Manchester Piccadilly working 2S99 during the evening rush hour.

Difficulty: Easy | Duration: 40 minutes

REQUIREMENTS:

Armstrong Powerhouse

- Class 142 Diesel Multiple Unit Pack
- Class 150/1 Enhancement Pack
- Class 319 Electric Multiple Unit Pack Vol. 1
- Class 156 Diesel Multiple Unit Pack

Steam

- BR Class 150/1 DMU Add-On
- Class 390 EMU Add-On

Alan Thomson Sim

- Alan Thomson Simulation and Imbue Studios - Class 185 Multiple Unit Pack

2S16 13:19 Manchester Piccadilly – New Mills Central

Drive 150123 on a stopping service to New Mills Central.

Difficulty: Easy | Duration: 35 minutes

REQUIREMENTS:

Just Trains

- Voyager Advanced 2019

Armstrong Powerhouse

- Class 156 Diesel Multiple Unit Pack
- Class 142 Diesel Multiple Unit Pack
- Class 319 Electric Multiple Unit Pack Vol. 1
- Class 175 Enhancement Pack 2.0
- Class 150/2 Diesel Multiple Unit Pack
- Class 66 Enhancement Pack
- Class 150/1 Enhancement Pack

Steam

- South Wales Coastal: Bristol - Swansea Route Add-On
- EWS Class 66 v2.0 Loco Add-On
- Welsh Marches: Newport - Shrewsbury Route Add-On
- BR Class 150/1 DMU Add-On

Alan Thomson Sim

- Alan Thomson Simulation and Imbue Studios - Class 185 Multiple Unit Pack

Hope Cement Transfer

Take control of 20168 'Sir George Earle', moving various rakes of wagons between the sidings and the Cement Works.

Difficulty: Hard | Duration: 55 minutes

REQUIREMENTS:

Just Trains

- Class 20 Advanced Collection

Armstrong Powerhouse

- JPA Wagon Pack
- Class 150/2 Diesel Multiple Unit Pack

Steam

- Settle to Carlisle Route Add-On
- Freightliner Class 66 v2.0 Loco Add-On

Standard scenarios using default Train Simulator stock

No additional payware add-ons are needed for these scenarios to operate correctly.

[Default] 6E56 06:22 Tunstead – Drax

Drive a Class 47 from Chinley East Junction to Sheffield working 6E56 Tunstead-Drax.

Difficulty: Medium | Duration: 45 minutes

[Default] 0H08 07:26 Earles Sidings – Bredbury R.T.S.

Drive a Class 47 from Earles Sidings to Bredbury R.T.S. in preparation to work 6F33 to Runcorn later in the morning.

Difficulty: Easy | Duration: 60 minutes

[Default] 2H11 11:21 Hazel Grove – Manchester Piccadilly

Drive a stopping service from Hazel Grove to Manchester Piccadilly.

Difficulty: Easy | Duration: 30 minutes

[Default] 5S07 Longsight – New Mills / 2S07 New Mills Central – Manchester Piccadilly

Drive a DMU from Longsight Depot to New Mills Central via Stockport on 5S07 before returning on service 2S07 to Manchester Piccadilly via Romiley in early Summer 2018.

Difficulty: Medium | Duration: 70 minutes

[Default] 2S77 20:14 Sheffield – Manchester Piccadilly

Drive a DMU from Sheffield to Manchester on 2S77 20:14 Sheffield to Manchester during the summer of 2018.

Difficulty: Medium | Duration: 75 minutes

[Default] 1B68 07:53 Manchester Airport – Cleethorpes

Drive a DMU working 1B68 between Manchester Piccadilly and Sheffield.

Difficulty: Easy | Duration: 55 minutes

[Default] 2S82 10:49 Manchester Piccadilly – Sheffield

Drive a stopper service to Sheffield.

Difficulty: Easy | Duration: 80 minutes

[Default] 2S99 18:24 Rose Hill Marple – Manchester Piccadilly

Drive a DMU from Rose Hill Marple to Manchester Piccadilly working 2S99 during the evening rush hour.

Difficulty: Easy | Duration: 40 minutes

[Default] 2S16 13:19 Manchester Piccadilly – New Mills Central

Drive a stopping service to New Mills Central.

Difficulty: Easy | Duration: 35 minutes

[Default] Hope Cement Transfer

Take control of a Class 37 transferring a rake of cement wagons from the sidings to the cement works.

Difficulty: Easy | Duration: 20 minutes

Free Roam scenario

Pick a train and explore the route!

Manchester Piccadilly Free Roam

QUICK DRIVE

This route is equipped for use with the Quick Drive option in Train Simulator.

To access this option from the Main Menu, press the 'Drive' button and then the 'Quick Drive' tab at the top left.

The Quick Drive menu

The top left area on the menu is where you select the train you wish to drive.

When you click on the menu directly to the right of the train picture, it shows the variations/consists available for the selected train in the right-side area of the menu. Click on the consist that you want to drive.

Changing your train

If you want to drive a different train, click back on the top left train picture. The right side of the menu will change and will display all the trains you have installed in Train Simulator.

Use the 'Page' button located at the top middle of the pictures to scroll through them all.

All installed trains which have Quick Drive enabled are displayed. If the train does NOT have Quick Drive enabled, it will NOT be displayed in the Quick Drive menu.

Selecting your route

When you have selected the train and consist you wish to drive, you then need to select the route.

In the middle left area are the route selection menus. Click on the middle far left route picture. This will change the right-side area of the menu to display the routes that you have installed in Train Simulator.

Choosing departure and arrival stations

Click on the route 'map' image directly to the right of the route picture. This will then show the available departure and arrival points for the route. You can select them by clicking on the ones you want.

Changing the time and weather

Controls for changing the time of day and weather conditions are on the lower left area. You can use these to adjust the time and weather settings as you wish.

Driving

When you have made all your selections, press the 'Drive' button on the lower right side of the menu and Train Simulator will load your settings.

IMPORTANT – Filters

In the Standard and Free Roam ‘Drive’ menus there are various locomotive and route filter options along the top of the right side. We strongly recommend that these are all set to ‘None’ unless you are experienced in using them.

If you set a filter and forget to remove it, there is a strong possibility that not all the available locomotives and/or routes will be displayed in the menu.



CREDITS

Route developers

Nicholas Wiszniewski

Mark Walker – track laying

Thomas Harrison – track scenery

Custom objects

Gü Studios – track models

Benedict Cooper, Callum Green, Alexander Penfold, Nicholas Wiszniewski, Nitin Singh, William Stead, Tom Williams

Scenarios

Thomas Harrison, Mark Walker, Benedict Cooper, Malcolm Elliott

Just Trains

Project Management	Alex Ford
Installer	Martin Wright
Artwork	Fink Creative
Manual	Alex Ford
Technical Support	Craig Haskell, Mark Allison, Dan Cushing
Customer Service	Simon King

Special thanks to Paul Taylor, EMR driver Kerry Hewitt and Sean Gregory.

Special thanks also to all the testers.

COPYRIGHT

©2022 Just Trains. All rights reserved. Just Trains and the Just Trains logo are trademarks of JustFlight London Limited, St. George's House, George Street, Huntingdon, PE29 3GH, UK. All trademarks and brand names are trademarks or registered trademarks of the respective owners, and their use herein does not imply any association or endorsement by any third party.

Note: One or more textures on some of the 3D models in this product have been created with images from [Textures.com](https://www.textures.com). These images may not be redistributed. Please visit [Textures.com](https://www.textures.com) for more information.

Just Trains Midland Main Line route and add-ons



Midland Main Line: Sheffield-Derby



Nottingham-Lincoln Extension



FREE Scenario Pack



Barrow Hill Roundhouse Extension



Derby-Nottingham-Leicester Extension



Erewash Valley



Derwent Valley Line

Just Trains™
www.justtrains.net